

RANDOLPH COUNTY, ILLINOIS

# RESOURCE GUIDE 2026-2027

FIFTH EDITION



SCAN FOR  
DIGITAL GUIDE



*Bringing people and services together.*



# RANDOLPH COUNTY, IL RESOURCE GUIDE

\* Located outside of Randolph County but available to Randolph County residents  
 \*\* Online & National Hotline numbers

## TABLE OF CONTENTS

<b>ANCHOR AGENCIES Offering a Variety of Services.....</b>	<b>14</b>
ComWell.....	14
DHS (Department of Human Services) Family Community Resource Center.....	15
Find Help SI.....	15
Randolph County Health Department.....	15
Western Egyptian Economic Opportunity Council, Inc.....	16
*Centerstone.....	16
*National Alliance on Mental Illness of Southwestern Illinois (NAMI SWI).....	17
**211 United Way Help Line.....	17
<b>ALCOHOL MISUSE &amp; RECOVERY .....</b>	<b>17</b>
Alcoholics Anonymous – Find AA Meetings.....	17
*Alcoholic Rehabilitation Community Home (ARCH).....	18
<b>ALZHEIMERS.....</b>	<b>18</b>
*Alzheimer’s Association & Hotline.....	18
**Alzheimer Support.....	18
**Alzheimer’s.gov.....	18
**National Institute on Aging - Alzheimer’s.....	18
<b>ANIMALS .....</b>	<b>18</b>
Animal Control – Randolph County.....	18
*Professional Wildlife Removal.....	18
**PETA - Animal Abuse Hotline.....	18
<b>AUTISM .....</b>	<b>19</b>
*ABA of Illinois - Applied Behavior Analysis.....	19
*Acorn Health - ABA Autism Therapy in Illinois.....	19
*Autism Society of Southern Illinois.....	19
*BlueSprig.....	19
*Center for Autism and Related Disorders.....	19
*Center for Autism Spectrum Disorders.....	19
*Centerstone CASTLE Services.....	19
*Emergent Learning Centers.....	20
*Illinois Center for Autism.....	20
*The Autism Clinic at Hope (TAC).....	20
*The Autism Program of Illinois (TAP).....	20
<b>BRAIN INJURY (TRAUMATIC).....</b>	<b>20</b>
<b>SERVICES &amp; TREATMENT .....</b>	<b>20</b>
*Brain Injury Association of America.....	20
*Brain Injury Association of Illinois.....	20
*Brain Injury Foundation of St. Louis.....	21
*Missouri Brain & Spine.....	21
*NeuroRestorative.....	21
*The Rehabilitation Institute.....	21
*Washington University and Barnes-Jewish Neurology & Neurosurgery Center.....	21
<b>SUPPORT GROUPS.....</b>	<b>21</b>
*Brain Injury and Stroke Support Group.....	21
<b>CANCER.....</b>	<b>21</b>
Chemotherapy and Infusion Center (Memorial Hospital of Chester).....	21
Lung Screening Program (Memorial Hospital of Chester).....	21
*American Cancer Society.....	22

*Austin Wade Foundation.....	22
*Illinois Breast and Cervical Cancer Program .....	22
*SIH Breast Center (Southern Illinois Healthcare).....	22
*SIH Cancer Institute (Southern Illinois Healthcare) .....	22
*Siteman Cancer Center at Memorial Hospital (Shiloh) .....	22
**National Cancer Institute Cancer Information Services .....	22
<b>CELL PHONE .....</b>	<b>22</b>
**LifeWireless.....	22
**SafeLink .....	22
<b>CENTER FOR DISEASE CONTROL AND PREVENTION .....</b>	<b>23</b>
**U.S. Centers for Disease Control and Prevention (CDC).....	23
<b>CHILD ABUSE .....</b>	<b>23</b>
Illinois Department of Children & Family Services ( <i>Sparta</i> ) .....	23
**Childhelp National Child Abuse Hotline .....	23
**Illinois Department of Children and Family Services Child Abuse Reporting Hotline .....	23
<b>CHILD ADVOCACY.....</b>	<b>23</b>
*Birth to Five Illinois .....	23
*St. Clair County Child Advocacy Center.....	23
<b>CHILDREN &amp; FAMILY .....</b>	<b>24</b>
<b>ADOPTION &amp; FOSTER CARE .....</b>	<b>24</b>
Caritas Family Solutions .....	24
Life Network of Southern Illinois .....	24
*Equipping the Called.....	24
*Hoyleton Youth & Family Services.....	24
*Lutheran Child and Family Services of Illinois .....	25
*Lutheran Social Services of Illinois .....	25
<b>CAMPS .....</b>	<b>25</b>
*Camp Wartburg (a ministry of LCFS of IL) .....	25
<b>CHILD CARE ASSISTANCE .....</b>	<b>26</b>
**Illinois Cares for Kids.....	26
<b>EARLY CHILDHOOD EDUCATION &amp; CARE.....</b>	<b>26</b>
Brightpoint (previously Children’s Home & Aid).....	26
Chester Early Childhood Center .....	26
Western Egyptian Economic Opportunity Council, Inc. (Head Start) .....	26
<b>MISCELLANEOUS YOUTH &amp; FAMILY SERVICES .....</b>	<b>26</b>
ComWell.....	26
DHS Family Community Resource Center.....	26
Randolph County Birth to Three program in partnership with Chester School District .....	26
Randolph County Health Department.....	27
Regional Office of Education (ROE) – Monroe-Randolph Counties.....	27
University of Illinois Extension – Randolph County.....	27
*Boys and Girls Club of Carbondale .....	27
*Centerstone.....	27
*Planned Parenthood .....	28
*The Night’s Shield .....	28
**CDC Infant and Toddler Nutrition .....	28
**Department Of Children and Family Services (DCFS).....	28
**Safe2Help Illinois .....	28
<b>CRISIS .....</b>	<b>28</b>
ComWell.....	28
**988: National Suicide & Crisis Lifeline .....	28
**Illinois CARES Line: 24/7 .....	28
**Illinois Warm Line.....	29
**Crisis Text Line .....	29
<b>DENTAL CARE .....</b>	<b>29</b>
<b>LOCAL .....</b>	<b>29</b>
Barrett Family Dental.....	29
Chester Family Dental.....	29

\* Located outside of Randolph County but available to Randolph County residents  
 \*\* Online & National Hotline numbers

Franklin Hometown Dental .....	29
Park Place Dental Group .....	29
Stephanie E. Graham, DMD.....	29
Tina Stulce, DDS.....	29
<b>REDUCED FEES .....</b>	<b>30</b>
*Dental Safari .....	30
*Paul B. Hanks Dental Clinic (at Lewis & Clark Community College).....	30
*Shawnee Health Care Dental .....	30
*SIU Community Dental Center .....	30
*SIU Dental School.....	30
*The Smile Factory Clinic .....	30
<b>DIABETES .....</b>	<b>30</b>
Memorial Hospital of Chester .....	30
Sparta Community Hospital .....	31
*VA Medical Center, Marion.....	31
**American Diabetes Association .....	31
**Children with Diabetes .....	31
**Illinois Department of Public Health: Diabetes Prevention and Control .....	31
**Medline Plus: Diabetes (National Library of Medicine) .....	31
**National Institute of Diabetes, Digestive & Kidney Diseases .....	31
<b>DISABILITY RESOURCES .....</b>	<b>31</b>
HOUSING .....	31
ComWell .....	31
DHS Family Community Resource Center .....	31
LINC Inc.....	31
*Archway .....	32
*Centerstone.....	32
*Division of Specialized Care for Children (DSCC).....	32
*Illinois Guardianship Advocacy Commission .....	32
*Illinois Mentor.....	32
*Southern Illinois Center for Independent Living (SICIL) .....	32
<b>DOMESTIC VIOLENCE .....</b>	<b>32</b>
*Survivor Empowerment Center .....	32
*Violence Prevention Center Southwestern Illinois .....	33
**Illinois Domestic Violence Hotline .....	33
**The National Domestic Violence Hotline .....	33
<b>EATING DISORDERS .....</b>	<b>33</b>
*Branz Nutrition Counseling.....	33
*Clementine St. Louis.....	33
*Embodied Self Counseling, Erin Grumley, LPC .....	33
*McCallum Place .....	33
*McDaniel Nutrition Therapy.....	33
*Saint Louis Behavioral Medicine Institute .....	33
*St. Louis Eating Recovery Therapy.....	34
**Equip Health – Virtual Eating Disorder Care .....	34
<b>EDUCATION .....</b>	<b>34</b>
ALTERNATIVE, CAREER AND TECHNICAL EDUCATION .....	34
Career Center of Southern Illinois .....	34
Monroe Randolph Red Brick School *Regional Safe School* .....	34
Perandoe Educational Program – SWICC Campus .....	34
Perandoe Special Education District Office .....	34
GED/OTHER .....	34
Regional Office of Education (ROE) Monroe-Randolph Counties .....	34
*Southwestern Illinois College – Youth Services.....	35
PRIVATE SCHOOLS.....	35
St. John Lutheran School .....	35
St. John the Baptist Catholic School .....	35

\* Located outside of Randolph County but available to Randolph County residents

\*\* Online & National Hotline numbers

St. John’s Lutheran School.....	35
St. Mark’s Lutheran School .....	35
St. Mary’s Catholic School.....	35
Trinity Lutheran School .....	35
<b>PUBLIC SCHOOLS .....</b>	<b>35</b>
Chester Elementary School.....	35
Chester High School.....	35
Coulterville Elementary, Jr & High School.....	35
Evansville Attendance Center .....	35
Prairie Du Rocher Elementary School .....	35
Red Bud Elementary School .....	35
Red Bud High School.....	35
Sparta High School.....	35
Sparta Lincoln School .....	36
Steeleville Elementary School.....	36
Steeleville High School .....	36
<b>POST-SECONDARY EDUCATION .....</b>	<b>36</b>
* John A. Logan College (JALC).....	36
*Rend Lake College (RLC).....	36
*Southern Illinois University (SIU) .....	36
*Southern Illinois University Edwardsville (SIUE).....	36
*Southwestern Illinois College (SWIC).....	36
<b>ELECTRONICS .....</b>	<b>36</b>
Gadget Ambulance LLC .....	36
*PCs for People .....	36
<b>EMPLOYMENT.....</b>	<b>37</b>
<b>EMPLOYMENT AGENCIES .....</b>	<b>37</b>
*Express Employment Professionals .....	37
*Hire Level .....	37
*Labor Finders .....	37
*Proman Staffing .....	37
*StaffQuick.....	37
<b>JOB POSTINGS .....</b>	<b>37</b>
County Journal Job Hub .....	37
**Work for Illinois.....	37
<b>MISCELLANEOUS .....</b>	<b>37</b>
Southwestern Illinois WorkNet Center .....	37
*MERS Goodwill St. Clair County Career and Workforce Development Center.....	37
<b>ENERGY ASSISTANCE .....</b>	<b>38</b>
Western Egyptian Economic Opportunity Council, Inc. ....	38
<b>EPILEPSY .....</b>	<b>38</b>
*Epilepsy Foundation of Greater Southern Illinois.....	38
<b>FIRE DEPARTMENTS .....</b>	<b>38</b>
Baldwin Community Fire Protection District.....	38
Chester Fire Department .....	38
Coulterville Volunteer Fire Department – Fire Protection District .....	38
Ellis Grove Fire Department.....	38
Evansville Fire Department.....	38
Percy Volunteer Fire Department.....	38
Prairie Du Rocher Fire Department.....	38
Red Bud Fire Department .....	38
Sparta Fire Department .....	38
Steeleville Volunteer Fire Department.....	38
Tilden Volunteer Fire Department .....	38
<b>FOOD .....</b>	<b>39</b>
<b>FOOD PANTRIES &amp; RESOURCES .....</b>	<b>39</b>
Chester Area Christian Pantry .....	39
Coulterville Unit School District 1.....	39

\* Located outside of Randolph County but available to Randolph County residents

\*\* Online & National Hotline numbers

Food on the Move – Steeleville Senior Center .....	39
Musketeer Market .....	39
RBES Royal Table.....	39
Red Bud Food Pantry.....	39
Sparta Food Pantry.....	39
St. John Lutheran Church – Sparta, IL .....	39
St. Peter UCC Church.....	39
Steeleville Community Food Pantry .....	39
Tilden Food Pantry .....	40
Western Egyptian Economic Opportunity Council, Inc.....	40
**Hunger Hotline .....	40
<b>SUPPLEMENTAL NUTRITION ASSISTANCE PROGRAM (SNAP) .....</b>	<b>40</b>
DHS Family Community Resource Center.....	40
<b>WOMEN, INFANTS AND CHILDREN (WIC).....</b>	<b>40</b>
Randolph County Health Department.....	40
<b>GAMBLING .....</b>	<b>40</b>
**National Council on Problem Gambling (NCPG).....	40
<b>GOVERNMENT .....</b>	<b>40</b>
Randolph County Courthouse .....	40
*Supplemental Security Income (SSI) * .....	41
<b>GRIEF SERVICES .....</b>	<b>41</b>
Griefshare .....	41
*Heartlinks Grief Center.....	41
*Hospice of Southern Illinois, Inc.....	41
<b>HEARING .....</b>	<b>42</b>
DEAF.....	42
Professional Hearing Associates.....	42
*Lions of Illinois Foundation.....	42
**Alexander Graham Bell.....	42
**State of Illinois Deaf and Hard of Hearing Commission .....	42
<b>MISCELLANEOUS .....</b>	<b>42</b>
**CaptionCall .....	42
**Illinois Telecommunications Access Corporation (ITAC).....	42
<b>HEART .....</b>	<b>42</b>
**American Heart Association .....	42
<b>HISPANIC RESOURCES .....</b>	<b>43</b>
Puentes de Esperanza.....	43
<b>HOME HEALTH SERVICES .....</b>	<b>43</b>
At Home Health Care – Sparta Community Hospital .....	43
Red Bud Regional Home Care.....	43
*Amedisys Home Health.....	43
*Southwestern Illinois Visiting Nurse Association – Services for Seniors.....	43
**Illinois Department of Public Health – File a Health Care Complaint.....	43
<b>HOMELESS SERVICES .....</b>	<b>43</b>
Regional Office of Education (ROE) Monroe-Randolph Counties .....	43
Southern Illinois Coalition for the Homeless .....	44
Western Egyptian Economic Opportunity Council, Inc.....	44
*Carbondale Warming Center .....	44
*The Center for Empowerment and Justice .....	44
<b>HOMELESS SHELTERS, DOMESTIC SHELTERS &amp; TRANSITIONAL HOUSING .....</b>	<b>44</b>
*Amen Center.....	44
*Charity Home Ministries .....	45
*Christian Community Compassion Center (aka the 4 C’s) .....	45
*Family Life Shelter.....	45
*Good Samaritan House.....	45
*Good Samaritan Ministries .....	45
*Lifeboat Alliance.....	45

\* Located outside of Randolph County but available to Randolph County residents

\*\* Online & National Hotline numbers

*Lighthouse Shelter.....	46
*Pathway Ministries.....	46
*Society of St. Vincent de Paul Ministries.....	47
*Survivor Empowerment Center .....	47
*The Night's Shield .....	47
*Violence Prevention Center.....	47
<b>HOSPICE.....</b>	<b>47</b>
Maple Creek Hospice .....	47
*Family Hospice of Belleville Area.....	47
*Hospice of Southern Illinois, Inc.....	48
*Vitas Hospice Care.....	48
<b>HOSPITALS.....</b>	<b>48</b>
Memorial Hospital of Chester .....	48
Red Bud Regional Hospital.....	48
Sparta Community Hospital .....	48
<b>HOUSING .....</b>	<b>48</b>
<b>COUNSELING, HOUSING PROGRAMS &amp; RENT ASSISTANCE .....</b>	<b>48</b>
Habitat for Humanity.....	48
Western Egyptian Economic Opportunity Council, Inc.....	48
<b>MENTAL ILLNESS.....</b>	<b>48</b>
ComWell - Melmar (Sparta).....	48
<b>PUBLIC HOUSING .....</b>	<b>48</b>
Randolph County Housing Authority .....	48
<b>SENIORS/DISABLED .....</b>	<b>49</b>
MACO Management Co., Inc.....	49
<b>SPECIAL NEEDS FOR INTELLECTUAL DISABILITY.....</b>	<b>49</b>
ComWell – Community Integrated Living Arrangement (CILA) (Chester).....	49
Progressive Careers and Housing (CILA) Sparta Terrace.....	49
<b>HUMAN TRAFFICKING.....</b>	<b>49</b>
*Healing Action Network, Inc.....	49
*Restoration 61 .....	49
**National Human Trafficking Hotline .....	49
<b>INTERNET ASSISTANCE .....</b>	<b>49</b>
**Lifeline HUD Resource .....	49
<b>LEGAL SERVICES.....</b>	<b>49</b>
*Equip for Equality, Inc.....	49
*Land of Lincoln, Legal Aid .....	50
*SIU Carbondale Legal Clinic.....	50
*Veterans Legal Assistance Program (VLAP) (SIU) .....	50
<b>LGBTQIA+ RESOURCES .....</b>	<b>50</b>
*Metro East PRIDE .....	50
*PFLAG.....	50
*Queer-Oriented Rural Resource Network (QORRN) .....	50
*Rainbow Café LGBTQ Center .....	50
**The Trevor Project .....	50
<b>LIBRARIES .....</b>	<b>51</b>
Chester Public Library .....	51
Coulterville Public Library.....	51
Evansville Public Library.....	51
Marissa Public Library .....	51
Prairie du Rocher Community Library .....	51
Red Bud Public Library .....	51
Sparta Public Library .....	51
Steeleville Area Public Library.....	52
Tilden Public Library .....	52
<b>LONG-TERM CARE &amp; ASSISTED LIVING .....</b>	<b>52</b>
Addington Place of Sparta.....	52

\* Located outside of Randolph County but available to Randolph County residents

\*\* Online & National Hotline numbers

Coulterville Rehabilitation and Health Care Center.....	52
Garden Place Senior Living .....	52
High Point Residence.....	52
Randolph County Care Center.....	52
Three Springs Senior Living & Rehabilitation .....	52
<b>MEDICAL .....</b>	<b>52</b>
<b>AFTERCARE &amp; THERAPY PROGRAMS .....</b>	<b>52</b>
Memorial Hospital Therapy & Sports Rehab Center.....	52
Red Bud Regional Hospital .....	53
The Center, After Care – Physical & Sports Therapy (Sparta Community Hospital).....	53
<b>BREAST HEALTH.....</b>	<b>53</b>
Red Bud Regional Hospital .....	53
<b>CARDIOLOGY .....</b>	<b>53</b>
Cardiac Pulmonary Rehab Center (Memorial Hospital of Chester).....	53
Cardiopulmonary Rehabilitation (Sparta Community Hospital).....	53
Red Bud Regional Hospital .....	53
Sparta Cardiology Office (Sparta Community Hospital).....	53
<b>CARE MANAGEMENT PROGRAM.....</b>	<b>54</b>
Care Management Program (Sparta Community Hospital).....	54
<b>CLINICS, PHYSICIAN'S OFFICES &amp; WELLNESS CARE .....</b>	<b>54</b>
Chester Clinic (Memorial Hospital of Chester).....	54
Coulterville Medical Clinic (Sparta Community Hospital).....	54
Family Health Centre (Sparta Community Hospital).....	54
North Campus Healthcare Specialty Clinic (Sparta Community Hospital).....	54
Red Bud Health Clinic (Red Bud Regional Hospital).....	54
SIHF Healthcare.....	55
Sparta Medical Office (Sparta Community Hospital) .....	55
Steeleville Clinic (Sparta Community Hospital) .....	55
Steeleville Family Practice (Memorial Hospital of Chester).....	55
*Shawnee Health Services - Migrant/Farmworker Health Center.....	55
<b>CONVENIENT CARE .....</b>	<b>55</b>
Convenient Care, Walk-In Clinic (Memorial Hospital of Chester) .....	55
Convenient Care (Sparta Community Hospital) .....	55
Walk-In Clinic Red Bud Health Clinic (Red Bud Regional Hospital).....	55
<b>COUMADIN MANAGEMENT .....</b>	<b>56</b>
Coumadin Clinic (Sparta Community Hospital) .....	56
<b>DIALYSIS SERVICES.....</b>	<b>56</b>
DaVita Dialysis .....	56
Fresenius Kidney Care.....	56
<b>MOBILE HEALTHCARE .....</b>	<b>56</b>
Mobile Health Clinics (Sparta Community Hospital).....	56
<b>RESPIRATORY/PULMONARY.....</b>	<b>56</b>
Cardiac Pulmonary Rehab Center (Memorial Hospital of Chester).....	56
Cardiopulmonary Rehabilitation (Sparta Community Hospital).....	56
Lung Screening Program (Memorial Hospital of Chester).....	56
*Black Lung Program (A program of Shawnee Health Service).....	57
<b>SKILLED CARE.....</b>	<b>57</b>
Swing Bed Program (Memorial Hospital of Chester).....	57
Swing Bed Program (Red Bud Regional Hospital).....	57
Swing Bed Program (Sparta Community Hospital).....	57
<b>SLEEP LAB .....</b>	<b>57</b>
Memorial Hospital of Chester.....	57
Sparta Community Hospital.....	57
<b>SPECIALTY CLINIC .....</b>	<b>57</b>
Broadway Plaza Care Specialty Clinic (Sparta Community Hospital).....	57
Deaconess Illinois Specialty Clinic (Red Bud Regional Hospital).....	57
Memorial Hospital Specialty Clinic (Memorial Hospital).....	58
North Campus Healthcare Specialty Clinic (Sparta Community Hospital).....	58

\* Located outside of Randolph County but available to Randolph County residents

\*\* Online & National Hotline numbers

Red Bud Health Clinic (Red Bud Regional Hospital) .....	58
<b>MEDICAL INSURANCE.....</b>	<b>58</b>
**Affordable Care Act .....	58
**Healthcare for Kids .....	58
**Illinois Department of Insurance, Office of Consumer Health Insurance .....	58
**Medicaid .....	58
**Medicare.....	58
<b>MENTAL HEALTH.....</b>	<b>58</b>
ComWell .....	58
*Behavioral Health Crisis Center .....	59
*Centerstone.....	59
*Chestnut Health Services .....	59
*Christian Hospital Recovery Center .....	59
*Comprehensive Behavioral Health Center .....	59
*Egyptian Behavioral Health .....	59
*Christopher Rural Health Planning Corporation .....	60
*Farm Family Resource Initiative.....	60
*Gateway Foundation.....	60
*Hoyleton Youth & Family Services .....	60
*Carita Family Solutions (fka Human Support Services) .....	61
*Lincoln Prairie Behavioral Health Center .....	61
*NAMI Southwestern Illinois .....	61
*SIH Mulberry Center .....	61
*Touchette Regional Hospital Centerville .....	61
**Illinois Warm Line.....	61
<b>PHARMACIES &amp; DRUG TAKE BACK PROGRAMS .....</b>	<b>61</b>
PHARMACIES .....	61
Keil Pharmacy, Inc.....	61
Memorial Community Pharmacy.....	61
Moody Health Mart Pharmacy.....	61
Red Bud Country Mart Pharmacy.....	62
Tony's MediCenter Pharmacy.....	62
Victor's MediCenter Pharmacy .....	62
Wal-Mart (Sparta) .....	62
Wal-Mart (Chester).....	62
<b>DRUG TAKE BACK PROGRAMS.....</b>	<b>62</b>
Chester Police Department .....	62
Memorial Community Pharmacy.....	62
Moody Pharmacy .....	62
Red Bud Police Department.....	62
Sparta Police Department.....	62
Steeleville Police Department .....	62
<b>PHYSICAL ACTIVITY .....</b>	<b>62</b>
3 Nails Health & Fitness .....	62
Design Fitness .....	62
Randolph County YMCA.....	63
Southside Strength & Conditioning, LLC .....	63
The Center .....	63
Uptown Fitness Center.....	63
Vasquez's Fitness Center .....	63
<b>POISON CONTROL .....</b>	<b>63</b>
**Illinois Poison Control Center .....	63
<b>POLICE DEPARTMENTS .....</b>	<b>63</b>
Baldwin Police Department.....	63
Chester Police Department.....	63
Coulterville Police Department.....	63
Ellis Grove Police Department .....	63

\* Located outside of Randolph County but available to Randolph County residents

\*\* Online & National Hotline numbers

Evansville Police Department.....	63
Percy Plice Department.....	63
Randolph County Sheriff’s Department.....	63
Red Bud Police Department.....	63
Sparta Police Department.....	63
Steeleville Police Department.....	64
Tilden Police Department.....	64
<b>PREGNANCY.....</b>	<b>64</b>
Caritas Family Solutions.....	64
Life Network of Southern Illinois.....	64
Prenatal Class (Memorial Hospital of Chester).....	64
Randolph County Birth to Three program in partnership with Chester School District.....	64
Randolph County Health Department.....	64
Sparta Pregnancy Care Center.....	64
*Charity Home Ministries.....	64
*Centerstone.....	65
*Hager House – Hoyleton FS.....	65
*Lutheran Child and Family Services of Illinois.....	65
*Lutheran Social Services of Illinois.....	65
*Planned Parenthood.....	65
<b>PRISON &amp; JAIL SERVICES.....</b>	<b>65</b>
ComWell.....	65
*Illinois Department of Corrections.....	65
*Law and Grace Ministries.....	66
*Lutheran Social Services of Illinois.....	66
*Southern Illinois Community Engagement Response Team (SICERT).....	66
*Treatment Alternatives for Safe Communities (TASC).....	66
<b>RECREATION.....</b>	<b>66</b>
<b>BOWLING.....</b>	<b>66</b>
American Legion Bowling.....	66
Ratzkeller Lanes.....	66
<b>PARKS.....</b>	<b>66</b>
Cohen Complex.....	66
Cole Memorial Park.....	66
Fort de Chartres.....	66
Fort Kaskaskia State Park.....	66
Jaycees Park.....	67
Lincoln Park.....	67
Percy City Park.....	67
Randolph County State Recreation Area.....	67
World Shooting & Recreational Complex.....	67
*Piney Creek Ravine Nature Reserve.....	67
<b>MISCELLANEOUS &amp; POOLS.....</b>	<b>67</b>
Downstate Illinois.....	67
Ratz Memorial Park & City Pool.....	67
Sparta City Municipal Pool.....	67
University of IL – Randolph County Extension Office.....	67
*Perry Park Center (Missouri).....	67
*Ste. Genevieve County Community Center (Missouri).....	68
<b>RUNAWAY.....</b>	<b>68</b>
**National Runaway Safeline.....	68
<b>SENIOR SERVICES.....</b>	<b>68</b>
<b>NUTRITION SITES.....</b>	<b>68</b>
Northeastern Randolph County Senior Center (Sparta).....	68
Steeleville Senior Center.....	68
Western Egyptian (Chester Senior Center).....	68
<b>SENIOR PROGRAMS &amp; SERVICES.....</b>	<b>68</b>

\* Located outside of Randolph County but available to Randolph County residents

\*\* Online & National Hotline numbers

AmeriCorps Seniors – Retired and Senior Volunteer Program (RSVP) .....	68
Community Wellness Classes and Programs (Memorial Hospital of Chester) .....	68
Community Wellness Classes and Programs (Sparta Community Hospital) .....	68
ComWell .....	69
Randolph County Health Department .....	69
Red Bud Regional Home Care .....	69
Red Bud Regional Hospital - Senior Solutions .....	69
Silver Sneakers – Programs for Seniors ages 65+ .....	69
*AgeSmart Community Resources .....	69
*CenterPointe Hospital .....	69
*Illinois Department of Children & Family Services – Grandparents raising Grandchildren .....	69
*Illinois Department on Aging .....	70
*Illinois Telecommunication Access Corp (ITAC) .....	70
*Southwestern Illinois College – Programs and Services for Older Persons (PSOP) .....	70
*Violence Prevention Center of Southwestern Illinois .....	70
**AARP .....	71
<b>SOCIAL SECURITY BENEFITS .....</b>	<b>71</b>
Social Security Administration .....	71
<b>SEXUAL ASSAULT .....</b>	<b>71</b>
*Survivor Empowerment Center .....	71
*Metro East Every Survivor County .....	71
**National Sexual Assault Hotline .....	71
**RAINN’s National Sexual Assault Hotline .....	71
<b>SMOKING CESSATION .....</b>	<b>71</b>
Cardiac Pulmonary Rehab Center (Memorial Hospital of Chester) .....	71
Cardiopulmonary Rehabilitation (Sparta Community Hospital) .....	72
Lung Screening Program (Memorial Hospital of Chester) .....	72
**American Cancer Society – Quit for Life Program .....	72
**Illinois Tobacco Quitline .....	72
**Respiratory Health Association (RHA) .....	72
**Smokefree.gov .....	72
<b>SUBSTANCE MISUSE &amp; RECOVERY .....</b>	<b>72</b>
ComWell .....	72
*CenterPointe Hospital .....	72
*Centerstone .....	73
*Chestnut Health Systems .....	73
*Christian Hospital Recovery Center .....	73
*Comprehensive Behavioral Health Center .....	73
*Gateway Foundation .....	73
*Memorial Hospital .....	73
*NAMI .....	73
*New Season Treatment Center .....	73
*The Aviary Recovery Center .....	74
**Illinois Helpline .....	74
**Narcotics Anonymous .....	74
**Substance Abuse & Mental Health Services Administration (SAMHSA) .....	74
<b>SUICIDE PREVENTION .....</b>	<b>74</b>
**988 Lifeline .....	74
**Illinois Suicide Prevention .....	74
**LifeSavers Training Corp. .....	74
**The Hope Line .....	74
<b>TRANSPORTATION .....</b>	<b>75</b>
Illinois Department of Healthcare and Family Services .....	75
Monroe Randolph Transit District .....	75
*JewelRide Non-Emergency Medical Transport .....	75
<b>UNITED STATES POSTAL SERVICE .....</b>	<b>75</b>
Baldwin Post Office .....	75

\* Located outside of Randolph County but available to Randolph County residents

\*\* Online & National Hotline numbers

Chester Post Office.....	75
Ellis Grove Post Office .....	76
Evansville Post Office.....	76
Prairie du Rocher Post Office .....	76
Red Bud Post Office .....	76
Sparta Post Office .....	76
Steeleville Post Office .....	76
<b>UTILITIES.....</b>	<b>76</b>
Western Egyptian Economic Opportunity Council, Inc. ....	76
<b>VETERANS.....</b>	<b>76</b>
ComWell .....	76
*Centerstone.....	76
*Department of Veterans Affairs Behavioral Medicine .....	77
*Illinois Department of Veteran’s Affairs .....	77
*NAMI Southwestern Illinois .....	77
*Supportive Services for Veteran Families.....	77
**Veteran’s Crisis Line .....	77
<b>VISION .....</b>	<b>77</b>
<b>BLIND.....</b>	<b>77</b>
Illinois Department of Human Services – Bureau of Blind Services .....	77
*Illinois Secretary of State -Talking Book and Braille Services .....	77
<b>MISCELLANEOUS .....</b>	<b>78</b>
Marion Eye Center.....	78
Southern Illinois Eye Care .....	78
Walmart Vision Center .....	78
**American Academy of Ophthalmology .....	78
**National Eye Health Education Program.....	78
<b>WEATHERIZATION.....</b>	<b>78</b>
Western Egyptian Economic Opportunity Council, Inc. ....	78

\* Located outside of Randolph County but available to Randolph County residents  
 \*\* Online & National Hotline numbers

**ANCHOR AGENCIES OFFERING A VARIETY OF SERVICES**

**ComWell**

*For nearly 50 years, ComWell has provided behavioral health and developmental disability services to people of all ages. (Private insurance, Medicaid, Medicare or self-pay)*

**24 Hour Crisis Line** ..... **(888) 855-0034**

**Contact Info and Hours:** Monday-Thursday 8:00 am-5:00 pm, Friday 8:00 am-4:00 pm

*\*Individual office hours may vary*

Phone Number For All Locations:..... (618) 282-6233

**Locations:**

**Red Bud:** 10257 State Route 3, Red Bud, IL 62278

**Chester:** 2517 State St., Chester, IL 62233

**Sparta:** 104 Northtown Dr., Sparta, IL 62286

**Okawville:** 109 West Elm St., Okawville, IL 62271

**Website:** <https://comwell.us/>

**Services:**

- **Same-Day Assessment:** Readily available mental health and substance misuse assessment to identify best type of services for adults and youth including counseling, psychiatric, and case management.
  - **Hours:** Monday-Thursday from 9:00 am-3:00 pm.
- **Mobile Crisis Response:** Crisis is most often defined as someone experiencing hopelessness, delusions, or thoughts of harm to self or others. However, crisis can mean many things to an individual, so no matter the personal crisis, a person can receive assessment and support through the crisis program. This program operates 24/7/365 and can be accessed by contacting the 24/7 crisis hotline at .....(888) 855-0034
- **Developmental Disability Services:**
  - CILA (Community Integrated Living Arrangement) (Chester and Sparta)**  
**Services:** 24-hour supervised residential facility for adults with intellectual and developmental disabilities.
  - Community Day Service Program (Red Bud):** For people with developmental disabilities and intellectual disabilities such as Autism, Cerebral Palsy, and Down syndrome; services include community day services, sheltered employment, and residential services.
- **Behavioral Health Services:** Provides a wide range of professional behavioral health and intellectual disabilities services.
- **Counseling Services:** Available for Mental Health challenges. Help individuals, couples, and families with life’s challenges.
- **School Based Services:** Mental Health services for children and adolescents meeting clients where they are in schools.
- **Substance Use Disorder Services:** Individual and Intensive Outpatient Program services providing weekly to nine hours a week counseling services and case management services to assist with recovery.
- **Psychiatric Services:** Psychiatric Nurse Practitioners that evaluate and treat a wide range of mental health concerns for children, adolescents, and adults.
- **Medication Assisted Treatment:** Substance use recovery assisted through the use of medication and monitored by a Medical Doctor.
- **Melmar (101 Melmar Court) (Sparta):** 24-hour supervised residential facility for adults age 18 and over with a diagnosis of severe and persistent chronic mental illness. The program is designed to increase independent living skills and to facilitate community integration or reintegration.
- **Case Management Services:** Assistance with meeting basic needs and life’s difficulties both in the office, community, and in the home.
- **Partnership with Randolph County Housing Authority and local hospitals:** Our collaboration with RCHA gives us the opportunity to bridge gaps and form connections with other resources in the region such as Nursing Homes, Assisted Living Facilities, Hospitals, and various other agencies. We have partnerships both within and outside of Randolph County.

\* Located outside of Randolph County but available to Randolph County residents

\*\* Online & National Hotline numbers

- **Healthy Communities Alliance:** Organization of individuals from Randolph and Washington counties seeking to increase awareness and education to enhance physical and mental well-being through community partnerships.  
**Website:** <https://comwell.us/healthy-communities-alliance/>  
**Contact Info:** [allianceinfo@comwell.us](mailto:allianceinfo@comwell.us)

**DHS (Department of Human Services) Family Community Resource Center**

**Services:** Receives applications for assistance including the following:

- **Temporary Assistance for Needy (TANF):** Provides temporary financial assistance for pregnant women and families with one or more dependent children. TANF provides financial assistance to help pay for food, shelter, utilities, and expenses other than medical.
- **Aid to the Aged, Blind and Disabled (AABD):** Provides cash assistance for individuals over 65 years old, blind or disabled.
- **Earnfare:** Designed to provide adults who receive SNAP and volunteer an opportunity to gain valuable work experience, earn cash assistance, and become self-sufficient.
- **Earned Income Tax Credit (EITC):** If you work and meet eligibility requirements, you could claim the EITC to reduce your federal income taxes and get a bigger refund.
- **Supplemental Nutrition Assistance Program (SNAP):** Helps low-income people and families buy the food they need for good health. Benefits are provided on the Illinois Link Card.
- **Medical Assistance Program:** Provides medical assistance to individuals who meet eligibility criteria.

**Contact Info:** 870 Lehmen Dr., Chester, IL 62233 ..... Automated (618) 826-4559/TTY (866) 876-7176  
 After-Hours Crisis Number ..... (800) 828-7422

**Hours:** Monday-Friday 8:30 am-5:00 pm

**Website:** <https://www.dhs.state.il.us/page.aspx>

**Find Help SI**

**Services:** FindHelp SI is a live community resource platform accessing social services, community programs, and essential resources across 19 Southern Illinois counties and serves as an online gateway to vital services and information for individuals and families.

**Website:** <https://www.findhelpsi.org/>

**Randolph County Health Department**

RCHD is a certified local health department that provides clinical and environmental health services through the operation of various programs, services, and partnerships. RCHD offers multiple vaccine clinics for people of all ages.

**Contact Info:** 2515 State St., Chester, IL 62233 ..... (618) 826-5007  
 211 North Hasle, Sparta, IL 62286 ..... (618) 443-2995

**Hours:** Monday-Friday, 8:00 am-4:00 pm

**Website:** [randolphcountyil.gov/health-department](http://randolphcountyil.gov/health-department)

**Services:**

- **Maternal and Child Health Services:** Better Birth Outcomes – navigation program, Adverse Pregnancy Outcome Reporting Program (APORS), Women, Infants and Children (WIC), breastfeeding peer counseling, lead poisoning prevention program, and court ordered paternity testing.
- **Environment Health Programs:** Food establishment inspection and sanitation, cottage foods – temporary foods, foodborne illness investigation, private sewage and private water, non-community water and closed loop wells, vector control, and surveillance.
- **Infectious Disease Services:** Tuberculosis (TB) program, Sexually Transmitted Disease (STD) program, and communicable disease surveillance program.
- **Immunization Program:** Adult immunization program, Vaccines for Children program (VFC).
- **Public Health Emergency Preparedness:** Randolph County Emergency Response Team (ERT) - consists of dedicated volunteers who are interested in helping during emergencies, disasters, and special events throughout Randolph County.
- **Community Health Education:** Smoke free Illinois surveillance and enforcement, residential sharps disposal, drug overdose prevention program, Naloxone (Narcan) education and outreach, and school-based health education.

\* Located outside of Randolph County but available to Randolph County residents

\*\* Online & National Hotline numbers

**Western Egyptian Economic Opportunity Council, Inc.**

**Contact Info:** Central office, 1 Industrial Park, Steeleville, IL 62288 ..... (618) 965-3458  
 Head Start ..... (618) 965-3458  
 Randolph County Outreach, 1820 North Market, Bldg. A, Sparta, IL 62286 .... (618) 443-5231

**Hours:** Monday-Friday, 8:00 am-4:30 pm

**Website:** <https://weeoc.org/>

**Services:**

- **Crisis Based Services:** Include rent, utilities, and other assistance for low-income individuals.
- **Energy Assistance:** Includes Low Income Home Energy Assistance Program (LIHEAP), Percentage of Income Payment Plan (PIPP), and Warm Neighbors Cool Friends.
- **Food Pantry (Sparta)**  
 Location: 1820 North Market, Bldg. A., Sparta, IL 62286..... (618) 443-5231  
 Hours: By appointment only.
- **Housing Services:** HUD Certified Counseling (number to call 618-542-4656), rent and homeless prevention assistance (number to call 618-443-5231), and Pyramid Manor Apartments (number to call 618-965-3458).
- **Head Start:** Child development program serving three and four-year old children from low-income families and actively recruits and enrolls children with disabilities.  
 Locations:  
 Coulterville: 316 East Grant St., Coulterville, IL 62237 ..... (618) 497-4590  
 Percy: 607 West Pine St., Percy, IL 62272 ..... (618) 497-2410  
 Sparta: 1820 North Market, Bldg. B, Sparta, IL 62286 ..... (618) 443-3037
- **Senior Center (Chester):** Provides social, recreational, educational, and informational activities in addition to nutritious meals to people age 60+ (and their spouses regardless of age); assists with Medicare sign up and questions.  
 Location: 805 State St., Chester, IL 62233 ..... (618) 826-1508
- **Weatherization (Randolph County Outreach):** Enables low-income families to reduce their energy bills by making their homes more energy efficient.

**\*Centerstone**

*(Medicaid, Medicare and most private insurance)*

**Services:** Include addiction recovery, children and family, counseling, crisis and urgent care, forensic evaluation, housing, inpatient, military, pharmacy, primary care, psychiatric care, social services, and vocational and workplace assistance.

**Contact Info:**

**Inpatient Services – Fellowship House**

800 North Main St., Anna, IL 62906.....(618) 833-4456

**Inpatient Services – Centerstone Transitional Housing** .....(855) 608-3560

**Outpatient Services**

2311 South Illinois Ave., Carbondale, IL 62903..... (855) 608-3560

402 East Plaza Drive Ste 4/5, Carterville, IL 62918..... (855) 608-3560

403 Municipal Drive, Carterville, IL 62908 ..... (618) 932-9330

202 S. Bentley, Marion, IL 62959..... (855) 608-3560

1205 W. Main St., Marion, IL 62959 ..... (855) 608-3560

1307 West Main St., Marion, IL 62959..... (855) 608-3560

902 West Main St., West Frankfort, IL 62896 ..... (855) 608-3560

2615 Edwards St., Alton, IL 62002 ..... (877) 467-3123

**Military Services**..... (866) 726-4560

**Website:** <https://centerstone.org/locations/illinois/#nav-locations>

\* Located outside of Randolph County but available to Randolph County residents

\*\* Online & National Hotline numbers

**\*National Alliance on Mental Illness of Southwestern Illinois (NAMI SWI)**

NATIONAL HELPLINE..... (800) 273-8255

**What We Offer:** NAMI SWI provides free and confidential support, education, advocacy, and resources for people living with mental illness and for their families, friends, caregivers, and communities.

**Support Groups:**

- **NAMI Connection:** Peer-led support groups for adults living with mental health conditions open to people regardless of diagnosis.
- **NAMI Family Support Group:** For adult family members, significant others, and friends of individuals living with mental health challenges; provides a safe, structured space for sharing, learning, coping, and support.

Support groups are peer-led, free of cost, and are offered regularly (some weekly, others biweekly or monthly, depending on location).

**Education & Classes:** NAMI SWI offers a suite of free, peer-led educational and training programs designed to help individuals, families, and communities understand mental illness, promote recovery, and support wellness. Some of the programs include:

- **NAMI Family-to-Family:** For family members and close friends of individuals living with serious mental health conditions.
- **NAMI Peer-to-Peer:** For individuals living with mental illness who want to learn how to establish and maintain wellness and recovery.
- **NAMI In Our Own Voice:** A presentation program where people with lived experience share their recovery stories to offer hope and understanding.
- **NAMI Ending the Silence:** An outreach and educational program for youth, students, families, and school staff, to raise awareness of early signs of mental illness.
- Additional presentations, workshops, and community outreach, including collaborations with schools, local organizations, and public awareness events.

**Advocacy & Community Resources:**

- NAMI SWI works to provide a voice for people living with mental illness and their families, advocating for better mental health treatment, policies, and community support.
- We also connect individuals and families to community resources when we cannot provide direct help, such as local mental health services, crisis hotlines, and other support networks.

**Who We Serve / Service Area:** NAMI SWI serves residents of the following Illinois counties: Bond, Clinton, Calhoun, Jersey, Macoupin, Madison, Monroe, Montgomery, Randolph, and St. Clair.

**Contact Info:** 144 E. Ferguson Ave., Wood River, IL 62095, (Located inside Riverbend Family Ministries)

**Phone:** (618) 798-9788 — local line staffed by NAMI SWI; calls will generally be returned within 24 hours.

**Website:** <https://namiswi.org/>

**\*\*211 United Way Help Line**

**Services:** 24/7 connection to resources and agencies near you .....Dial 211

**Website:** <https://helpingpeople.org/united-way-2-1-1/>

**ALCOHOL MISUSE & RECOVERY**

For a current list of Alcohol Support Groups, call ..... (618) 282-6233 ext.179 or send email to [allianceinfo@comwell.us](mailto:allianceinfo@comwell.us)

**Alcoholics Anonymous – Find AA Meetings**

**Services:** Call hotline to help you stay sober, for information on meetings and AA services, to find treatment programs for alcohol abuse, if you are a friend or family member of an alcoholic, or if you are an AA member who has relapsed.

**Contact Info:** ..... **HOTLINE (800) 643-9618**

**Website:** <https://www.aa.org/find-aa>

\* Located outside of Randolph County but available to Randolph County residents

\*\* Online & National Hotline numbers

**\*Alcoholic Rehabilitation Community Home (ARCH)**

**Services:** ARCH is a Level III extended care residential treatment center providing individualized care for men struggling with substance use disorders.  
**Contact Info:** 1313 21st St., Granite City, IL 62040 ..... (618) 877-4987  
**Website:** <http://www.archhouse.org/>

See “*SUBSTANCE MISUSE & RECOVERY*” for additional resources.

**ALZHEIMERS**

**\*Alzheimer’s Association & Hotline**

**Services:** Available day or night with information, emotional support, caregiving tools, and referrals to healthcare, financial, and legal resources. Translation services are available.  
**Contact Info:** ..... 24/7 Helpline (800) 272-3900  
**Website:** <https://www.alz.org/illinois>

**\*\*Alzheimer Support**

**Services:** Alzheimer Support is a free service that assists families who have loved ones with Alzheimer’s disease or dementia. Through the free search tool and database of Alzheimer’s care facilities, families in need of care for their loved ones can locate licensed care homes and communities in the area that are best equipped to provide care for their loved ones.  
**Contact Info:** Memory Care Specialist 24/7 Helpline ..... (888) 595-9951  
**Website:** <https://www.alzheimersupport.com/memory-care/illinois/>

**\*\*Alzheimer’s.gov**

**Services:** Alzheimer’s and related dementias, clinical trials, tips for caregivers; life with dementia, resources for healthcare and taking action.  
**Website:** <https://www.alzheimers.gov/>

**\*\*National Institute on Aging - Alzheimer’s**

**Services:** Provide current, comprehensive, and unbiased information ..... (800) 438-4380  
**Website:** <https://www.nia.nih.gov/health/alzheimers-disease-fact-sheet>

**ANIMALS**

**Animal Control – Randolph County**

**Contact Info:** Randolph County dispatch ..... (618) 826-5484  
**Website:** <https://randolphcountyil.gov/animal-control/>

**\*Professional Wildlife Removal**

**Contact Info:** ..... (618) 861-6118  
**Website:** <http://www.wildlife-removal.com/city/IL-Chester.htm>

**\*\*PETA - Animal Abuse Hotline**

**Contact Info:** ..... (757) 622-7382

\* Located outside of Randolph County but available to Randolph County residents  
 \*\* Online & National Hotline numbers

## AUTISM

### \*ABA of Illinois - Applied Behavior Analysis

**Services:** Our behavior team delivers clinical and consultative support to clients in the natural environment. We design and implement support strategies that promote positive behavior change with a focus on preventing problem behaviors before they occur. We accomplish this through teaching new skills and improving quality of life through person-centered planning and behavior support services.

**Contact Info:** ..... (309) 635-3513

**Website:** <https://www.abaofillinois.org>

### \*Acorn Health - ABA Autism Therapy in Illinois

**Services:** We look for functional relationships between a child’s behaviors and his or her environment. The goal is to increase desirable behaviors that lead to quality of life and reduce behaviors that interfere with your child’s ability to communicate and learn.

**Contact Info:** 1716 Corporate Crossing Suite 3, Scott Air Force Base, IL ..... (618) 226-4687

400 St. Louis St., Suite 1, Edwardsville, IL ..... (618) 226-4697

722 West County Rd., Suite F, Jerseyville, IL ..... (618) 226-5646

**Website:** <https://www.acornhealth.com/states/aba-autism-therapy-illinois>

### \*Autism Society of Southern Illinois

**Services:** We create connections, empowering everyone in the Autism community with the resources needed to live fully.

**Contact Info:** P.O. Box 2621, Carbondale, IL 62901 ..... (618) 319-3303

**Website:** <https://www.autismsocietysi.org>

### \*BlueSprig

**Services:** We are dedicated to providing the compassionate, individualized care that your child deserves in the environment that is best suited for their needs. At BlueSprig, we provide Applied Behavior Analysis (ABA) therapy services for children of different ages and levels, in various settings and at convenient hours.

**Contact Info:** 343 Fountains Pkwy, Ste 201, Fairview Heights, IL 62208 ..... (618) 515-1441

**Website:** <https://www.bluesprigautism.com>

### \*Center for Autism and Related Disorders

**Services:** The Center for Autism and Related Disorders (CARD) is one of the world’s largest organizations using Applied Behavior Analysis (ABA) in the treatment of Autism Spectrum Disorder. CARD offers clinic, home, community, and telehealth-based services, based around the individualized recommendation. CARD has over 30 years of experience in the field of ABA with extensive resources available to their families.

**Contact Info:** 634 N. Main St. Ste. 4, O’Fallon, IL 62269 ..... (618) 726-5870

**Website:** <https://www.beaminghealth.com>

### \*Center for Autism Spectrum Disorders

**Services:** The Center for Autism Spectrum Disorders (CASD) is an inter-professional training and research center providing the Southern Illinois region with high-quality services and leadership for individuals with Autism Spectrum Disorder and their families. Our center focuses on community service, student training, and research.

**Contact Info:** Southern Illinois University, 625 Wham Dr., Rm 124, Carbondale, IL 62901 .. (618) 453-7130

**Website:** <https://www.casd.siu.edu/>

### \*Centerstone CASTLE Services

**Services:** CASTLE is an intensive, evidence-based therapy program for children between the ages of three and nine years old who have been diagnosed with Autism Spectrum Disorder (ASD). Serving children and families in Southern Illinois.

**Contact Info:** 402 East Plaza Dr., Ste. 5, Carterville, IL 62918 ..... (877) 467-3123

**Website:** <https://www.centerstone.org/castle/>

\* Located outside of Randolph County but available to Randolph County residents

\*\* Online & National Hotline numbers

**\*Emergent Learning Centers**

**Services:** We deliver outstanding individual and group intervention services for children and youth. We have dedicated treatment centers, provide consultation and support in homes and schools and offer telehealth services across the country.

**Contact Info:** 11780 Borman Dr., St. Louis, MO ..... (314) 949-1222  
 2421 Corporate Center, Ste 100, Granite City, IL..... (618) 589-5165

**Website:** <https://www.emergentlearningcenter.com>

**\*Illinois Center for Autism**

**Services:** A not-for-profit community based mental health treatment and educational agency dedicated to serving people with Autism Spectrum Disorder. Referrals are made through school districts, hospitals, doctors, and the Department of Human Services. Our goal is to educate children and adults with autism to help them achieve their highest level of independence in their home, school, and community.

**Contact Info:** 1306 Wabash Ave., Belleville, IL 62220 ..... (618) 416-7100  
 548 S. Ruby Ln., Fairview Heights, IL 62208..... (618) 398-7500

**Website:** <https://www.illinoiscenterforautism.org>

**\*The Autism Clinic at Hope (TAC)**

**Services:** The Autism Clinic at Hope is committed to giving children with Autism Spectrum Disorder professional care and attention so that they can soar. We know that the best caregivers are families and we offer the training, advice and support that parents and other family members need. Our Board-Certified Behavior Analysts (BCBA) specialize in providing early intensive behavior intervention. At our clinic, we provide Applied Behavior Analysis (ABA) therapy for children between ages of 0 to 8 years old. Our Licensed Clinical Psychologist provides autism diagnostic evaluations for individuals up to the age of 18.

**Contact info:** (217) 525-8332

**Locations:** 3022 South Park Ave., Ste. B, Herrin, IL 62948  
 4559 Benes Ave., Glen Carbon, IL 62034  
 145 Springfield Ct., O’Fallon, IL 62269

**Website:** <https://www.theautismclinic.org/>

**\*The Autism Program of Illinois (TAP)**

**Services:** TAP is a service network that serves and supports persons with Autism Spectrum Disorder and their families through a coordinated network of providers, parents, and university programs while developing, utilizing, and sharing best and promising practices.

**Contact info:** .....(217) 953-0894

**Locations:** Home office: 5220 S. 6th St, Ste 2300B, Springfield, IL 62703

**Partners:** \*SEE ABOVE: *The Autism Clinic (TAC) and Center for Autism Spectrum Disorders*

**Website:** <https://www.tap-illinois.org>

**BRAIN INJURY (TRAUMATIC)**

**SERVICES & TREATMENT**

**\*Brain Injury Association of America**

**Services:** BIAA’s mission is to advance awareness, research, treatment, and education to improve the quality of life for all people affected by brain injury.

**Contact Info:** 2265 Schuetz Rd., St. Louis, MO 63146 ..... (314) 426-4024

**Website:** <https://www.biausa.org>

**\*Brain Injury Association of Illinois**

**Services:** Statewide non-profit organization providing an information and resource call center, education, and programs and services to individuals who have sustained a brain injury, family members/caregivers, rehabilitation professionals, and the community at large.

**Contact Info:** P.O. Box 70, Palos Heights, IL 60463 ..... (312) 726-5699

**Website:** <https://www.biail.org>

<https://www.braininjurytoolbox.com> Brain Injury Toolbox, educational materials

\* Located outside of Randolph County but available to Randolph County residents

\*\* Online & National Hotline numbers

**\*Brain Injury Foundation of St. Louis**

**Services:** It is the mission of the Brain Injury Foundation of St. Louis to provide innovative community-based solutions to meet the specific social and vocational needs of individuals with brain injuries.  
**Contact Info:** 7850 Manchester Rd., St. Louis, MO 63143 ..... (314) 645-7230  
**Website:** <https://www.bifstl.org>

**\*Missouri Brain & Spine**

**Services:** Our multi-disciplinary approach includes a cooperative patient management team comprised of experts from the fields of neurology, neuroscience, functional neurology, psychology, physical and occupational rehabilitation, chiropractic and speech and language therapy to serve your health needs.  
**Contact Info:** 141 Chesterfield Business Pkwy, Chesterfield, MO 63005 ..... (636) 778-4300  
**Website:** <https://mobrainandspine.com>

**\*NeuroRestorative**

**Services:** Brain injury rehabilitation programs and services for children and teens.  
**Contact Info:** 1050 N. Reed Station Rd., Carbondale, IL ..... (800) 743-6802 OR (618) 529-3060  
**Website:** <https://www.neurorestorative.com>

**\*The Rehabilitation Institute**

**Services:** Let our rehabilitation experts create a custom care plan to help you regain as much function as possible after a brain injury.  
**Missouri Contact Info:** 4455 Duncan Ave., St. Louis, MO 63110 ..... (314) 658-3800  
**Website:** <https://encompasshealth.com/rehabinstitute>  
**Southern Illinois Contact Info:** 2351 Frank Scott Pkwy E, Shiloh, IL 62269 ..... (618) 206-7600  
**Website:** <https://encompasshealth.com/locations/shilohrehab/our-programs/neuro>

**\*Washington University and Barnes-Jewish Neurology & Neurosurgery Center**

**Services:** Faculty at Barnes-Jewish and Washington University Neuroscience Center offer comprehensive treatment to all levels and stages of traumatic brain injury.  
**Contact Info:** 4921 Parkview Pl #6-C, St. Louis, MO 63110 ..... (314) 362-1408  
**Website:** <https://www.barnesjewish.org/Medical-Services/Neurology-Neurosurgery/Neurology/Neurologists>

**SUPPORT GROUPS**

**\*Brain Injury and Stroke Support Group**

**Contact Info:** The Christian Life Center, 1901 N, Park Ave., Herrin, IL ..... (618) 942-2171 ext. 35312

**CANCER**

**Chemotherapy and Infusion Center (Memorial Hospital of Chester)**

**Services:** Chemotherapy and immunotherapy, blood transfusions, Port-a-Cath and PICC line care and maintenance, long-term antibiotic therapy, injections/infusions for most medical issues, coordinate care with family physicians, including labs, imaging, and specialty providers. Oncologist on-site weekly for Specialty Clinic appointments.  
**Contact Info:** 1900 State St., Chester, IL 62233 ..... 618-826-4581 ext. 1366  
**Website:** <https://www.mhchester.com/chemotherapy-infusion-center>

**Lung Screening Program (Memorial Hospital of Chester)**

**Services:** The Lung Cancer Screening Program is covered by most private insurance plans, Medicare and Medicaid. Patients must have a shared decision-making visit with a medical provider prior to their lung cancer screening test. Check with your provider or call our Nurse Navigator at the phone number below for assistance.  
**Contact Info:** 1900 State St., Chester, IL 62233 ..... 855-399-LUNG (5864)  
**Website:** <https://www.mhchester.com/lung-screening>

\* Located outside of Randolph County but available to Randolph County residents  
 \*\* Online & National Hotline numbers

**\*American Cancer Society**

**Contact Info:** 4503 West DeYoung St., Ste, 200C, Marion, IL 62959..... (618) 998-9898  
**Website:** <https://www.cancer.org/>

**\*Austin Wade Foundation**

**Services:** Financial help for families who have a child currently battling cancer in Southern IL.  
**Contact Info:** 210 Scout Cabin Rd., Carterville, IL 62918  
**Website:** <https://www.awfsoil.org/>

**\*Illinois Breast and Cervical Cancer Program**

**Services:** Free breast and cervical cancer screening for women who are uninsured, underinsured or have a deductible.  
**Contact Info:** 19 Public Sq., Ste. 150, Belleville, IL 62221..... (618) 825-4408  
**Website:** <http://dph.illinois.gov/topics-services/life-stages-populations/womens-health-services/ibccp>

**\*SIH Breast Center (Southern Illinois Healthcare)**

**Services:** Breast surgery, detection and diagnosis, mammograms, cancer care treatment and diagnosis, high-risk clinic and prevention.  
**Contact Info:** 1237 East Main St., Ste. C1, Carbondale, IL 62901 ..... (618) 457-2281  
**Website:** <https://www.sih.net/locations/sih-breast-center>

**\*SIH Cancer Institute (Southern Illinois Healthcare)**

**Services:** Cancer care, treatment and diagnosis; chemotherapy, detection and diagnosis, oncology and hematology, radiation therapy, surgical oncology, cancer treatment, colorectal cancer treatment, facing cancer treatment, prevention and support.  
**Contact Info:** 1400 Pin Oak Dr., Carterville, IL 62918..... (618) 985-3333  
**Website:** <https://www.sih.net/locations/sih-cancer-institute>

**\*Siteman Cancer Center at Memorial Hospital (Shiloh)**

**Services:** The treatment center offers convenient access to nationally recognized cancer care including clinical trials for residents of southern and central Illinois and beyond.  
**Contact Info:** 1418 Cross St., Shiloh, IL 62269..... Main (618) 607-1340  
 ..... Appointments (314) 747-7222  
**Website:** <https://siteman.wustl.edu/visiting/illinois/>

**\*\*National Cancer Institute Cancer Information Services**

**Services:** Provide the latest and most accurate cancer information.  
**Contact Info:** (800) 4-CANCER  
**Website:** <https://www.cancer.gov/contact>

**CELL PHONE**

**\*\*LifeWireless**

**Services:** Free unlimited data, talk and text; hotspot 5GB, and smartphone (or bring your own).  
**Contact Info:** ..... (888) 543-3620  
**Website:** <https://www.lifewireless.com/>

**\*\*SafeLink**

**Services:** Free cell phone and minutes program.  
**Contact Info:** ..... (800) 723-3546  
**Website:** <https://www.safelinkwireless.com/en/#!/newHome>

\* Located outside of Randolph County but available to Randolph County residents  
 \*\* Online & National Hotline numbers

## CENTER FOR DISEASE CONTROL AND PREVENTION

### \*\*U.S. Centers for Disease Control and Prevention (CDC)

**Services:** Online educational resources.

**Contact Info:** ..... (800) 232-4636

**Website:** <https://www.cdc.gov/>

## CHILD ABUSE

### Illinois Department of Children & Family Services (*Sparta*)

**Contact Info:** 202 West Jackson St. #B, Sparta, IL 62286..... (618) 443-4317

### \*\*Childhelp National Child Abuse Hotline

**Services:** If you are being hurt, know someone who might be hurting, or are afraid you might hurt another, call or text the hotline. Services include crisis intervention, information, and referrals to thousands of emergencies, social service and support resources. All calls are confidential.

**Contact Info:** ..... Call (800) 4 A Child or Text (800) 422-4453

**Website:** <https://www.childhelp.org/>

### \*\*Illinois Department of Children and Family Services Child Abuse Reporting Hotline

**Contact Info:** .....(800) 25 ABUSE | (800) 252-2873

**Website:** <https://dcfsonlinereporting.dcf.illinois.gov/>

## CHILD ADVOCACY

### \*Birth to Five Illinois

**Services:** Region 45 covering Monroe and Randolph Counties works to engage local community members to understand how families are accessing local early childhood education and care (ECEC) services and inform both decision makers and the broader community about the services families need. Through this work, Birth to Five Illinois gathers family stories and experiences, creating a plan that identifies the need for the expansion of quality early learning while improving access to and growth of ECEC services statewide.

**Contact Info:** Regional County Manager, Candace Barnes..... (309) 393-2550

**Email:** [cgardner@birthtofiveil.com](mailto:cgardner@birthtofiveil.com)

**Website:** <https://www.birthtofiveil.com/region45>

### \*St. Clair County Child Advocacy Center

**Services:** Provide a safe child-friendly environment for conducting forensic interviews and medical evaluation; assist with investigations of sexual and serious physical abuse of children, as well as with interviews of children who have witnessed violent crimes.

**Contact Info:** 300 West Main St., Ste. 3, Belleville, IL 62220 ..... (618) 277-1134

423 West Holmes St., Chester, IL 62233..... (618) 277-1134

**Website:** <https://www.stclairchildadvocacycenter.org/>

\* Located outside of Randolph County but available to Randolph County residents

\*\* Online & National Hotline numbers

## CHILDREN & FAMILY

### ADOPTION & FOSTER CARE

#### Caritas Family Solutions

**Services:** Private domestic adoption program, pregnancy options counseling, three types of foster care, intact family services, Fontebella maternity home, parenting classes, St. John Bosco Children’s Center, community integrated living arrangements, anger management, etc.

**Contact Info:** 1805 N. Market, Sparta, IL 62286 ..... (618) 708-3490  
 900 Royal Heights Rd., Suite 2150, Belleville, IL 62226 ..... (618) 394-5900  
 10286 Fleming Rd., Carterville, IL 62918 ..... (618) 985-2000

**Website:** <https://caritasfamilysolutions.org/>

#### Life Network of Southern Illinois

*(All services are FREE and confidential)*

**Services:** Pregnancy testing, limited ultrasound, limited STI and treatment, pregnancy options counseling, adoption education, parenting and life skills classes, childbirth, newborn care and breastfeeding classes, baby resources, dad’s mentoring programs/resources, abortion recovery program, community/medical resources, abstinence outreach education, and professional counseling.

**Contact Info:** 324 N. Main St., Red Bud, IL 62278..... (618) 282-4225

**Hours:** Monday, Tuesday, and Thursday 9:00 am–3:00 pm

722 N. Market St., Waterloo, IL 62298..... (618) 939-4224

**Hours:** Tuesday, Wednesday, and Thursday 8:30 am–4:30 pm, Friday 8:30 am–2:00 pm

**Website:** <https://supportmylifenet.com/>

#### \*Equipping the Called

**Services:** Foster and crisis closet provides new/gently used, current styled clothing, undies, diapers, and toiletries for foster families in Southern Illinois.

**Contact Info:** 850 Vandalia St., Suite 310 and 320, Collinsville, IL 62234..... (618) 529-5888

**Email:** [info@equippingthecalled.org](mailto:info@equippingthecalled.org) **Website:** <https://equippingthecalled.org/>

#### \*Hoyleton Youth & Family Services

*(Medicaid and other insurance)*

**Services:** Become a Foster Parent, join over 1,000 adults in Southern IL by fostering a child. Counseling Care, professional counseling services, customized to every need. Therapeutic Residential Care, settings to support youth with a range of developmental delays. Puentes de Esperanza, a place for Hispanic members to find critical resources.

**Contact Info:** Hoyleton Fairview Heights Campus and Puentes De Esperanza

8 Executive Dr., Ste. 200, Fairview Heights, IL 62208 ..... (618) 688-4727

Lehre Haus, 300 N. Church St., Belleville, IL 62220 ..... (618) 416-7337

Hagar House, 6015 and 6017 W. A St., Belleville, IL 62223 ..... (618) 416-7670

Hoyleton Children’s Home, 350 N. Main St., Hoyleton, IL 62803 ..... (618) 493-7382

Marion Office, 930 W. Cherry St., Marion, IL 62959 ..... (618) 315-2857

Chester Office, 1300 State St., Chester, IL 62233 ..... (618) 688-5052

**Website:** <https://hoyleton.org/>

\* Located outside of Randolph County but available to Randolph County residents

\*\* Online & National Hotline numbers

**\*Lutheran Child and Family Services of Illinois**

*(Sliding fee discount; insurance not accepted)*

**Services:**

- **Adoption:** assisting you through every step of your adoption journey.
- **Birth Parent Services:** providing expectant mothers and fathers with compassionate, respectful, and confidential assistance as you consider your child’s future as well as your own.
- **Counseling:** trauma-informed counseling to assist individuals in leading healthier lives.
- **Foster Care:** helping children who have experienced trauma to feel safe, build a future, and return to family.
- **Best Start for Families:** strengthens parent/caregiver and child interactions.
- **Extended Family Support:** provides short-term assistance to relatives or close family supporters who have been caring for a child/children informally.
- **Current Foster Parents:** standing alongside our foster parents to ensure you have the resources and support you need to meet the needs of the children for whom you care.
- **Intact Family Services:** provide vital support to parents who have few people to turn to when facing challenges in their lives.
- **Regenerations:** serves youth age 12-21 who are in foster care and involved with the juvenile or criminal justice system.
- **Southern Thirty Adolescent Center:** a 30-day short-term emergency shelter care facility for adolescent boys ages 11-18 located in Southern Illinois.

**Contact Info:** 711 Insight Ave., O’Fallon, IL 62269 ..... (618) 234-8904

**Website:** <http://www.lcfs.org/>

**\*Lutheran Social Services of Illinois**

**Services:**

- **Affordable Housing Services:** low-income apartment style housing for older adults and people over age 18 with disabilities in 20 developments throughout Illinois.
- **Home-Based Care for Seniors:** in home care to meet the changing needs of seniors
- **Intellectual and Developmental Disability Program:** residential and community-based living for adults with intellectual/developmental disabilities.
- **Mental Health Services:** crisis, counseling and therapy, mental health group homes and community support teams.
- **Prisoner and Family Ministry:** serving those who are incarcerated and their families, as well as individuals who have returned from prison to their communities.
- **Services for Children, Youth and Families:** providing supportive services for children in need and their families. Foster Care services focus on placing children who have experienced neglect or abuse in a loving and secure home.

**Contact Info:** Marion Children’s Program: 1616 W. Main St., Marion, IL 62959..... (618) 997-9196

Marion PFM:102 E. DeYoung St., Marion, IL 62959 ..... (618) 997-9076

**Website:** <https://www.lssi.org/>

**CAMPS**

**\*Camp Wartburg (a ministry of LCFS of IL)**

**Services:** Camp Wartburg is a retreat center and camp facility for youth, adults, and families of all backgrounds to encounter God’s creation. The facilities provide ideal space for a variety of summer camps, four-season outdoor education events for organized groups and schools, and year-round facility rentals for one-day and overnight retreats, family reunions, and other events.

**Contact Info:** 5705 LRC Rd., Waterloo, IL 62298 ..... (618) 939-7715

**Email:** [info@equippingthecalled.org](mailto:info@equippingthecalled.org)

**Website:** <https://campwartburg.com>

\* Located outside of Randolph County but available to Randolph County residents

\*\* Online & National Hotline numbers

**CHILD CARE ASSISTANCE**

**\*\*Illinois Cares for Kids**

**Services:** Search for Child Care and Early Learning Programs near you. Types of care include Child Care Center and Programs, Early Head Start and Head Start, Family Child Care, and In Home Care.

**Website:** <https://www.illinoiscaresforkids.org/>

**Child Care Assistance Program (CCAP):** helps families pay for childcare while they are working or attending school. Eligibility depends on the age of children, family income, and your schedule.

**Website:** <https://www.illinoiscaresforkids.org/infant-en/early-care-and-education/child-care-assistance-program>

**EARLY CHILDHOOD EDUCATION & CARE**

**Brightpoint (previously Children’s Home & Aid)**

**Services:** Serving Bond, Clinton, Madison, Monroe, Randolph, St. Clair and Washington Counties.

**Head Start:** See *Western Egyptian Economic Opportunity Council, Inc.*

**Preschool for All:** Free for children three to five years of age who meet eligibility

- Chester School District..... (618) 826-2354
- Red Bud School District ..... (618) 282-3507
- Sparta School District..... (618) 443-5331
- Steeleville School District..... (618) 965-3469

**Child Care Centers and Preschool Programs:** Ages served, operating hours, and tuition vary

- Discovery Youth Center (Red Bud)..... (618) 282-6222
- Hakuna Matata Kid Care (Steeleville)..... (618) 965-4114
- Prairie Du Rocher Elementary ..... (618) 284-3530
- St. John’s Lutheran Day Care (Red Bud) ..... (618) 282-3873
- Red Bud Pre-K..... (618) 282-3858

**Licensed Family Child Care Homes:** Ages served, operating hours, and tuition vary

- Renee Neal (Chester) ..... (618) 615-2423
- Sara Young (Coulterville)..... (618) 317-3669

**Child Care Resource and Referral** ..... (800) 467-9200 ext. 390

**Child Care Assistance Program** ..... (800) 847-6770 ext. 360

**Website:** <https://www.brightpoint.org/>

**Chester Early Childhood Center**

**Services:** The new center features four full-day preschool classrooms and an Early Childhood Special Education classroom which offers both morning and afternoon half-day sessions. The Pre-K at the center will be free to all families, with children receiving breakfast, lunch, and a snack each day.

**Contact Info:** 2319 Old Plank Rd, Chester, IL 62233.....(618) 822-0829

**Fax:**..... 618-320-3200

**Western Egyptian Economic Opportunity Council, Inc. (Head Start)**

*See information under Anchor Agencies.*

**MISCELLANEOUS YOUTH & FAMILY SERVICES**

**ComWell**

*See information under Anchor Agencies.*

**DHS Family Community Resource Center**

*See information under Anchor Agencies.*

**Randolph County Birth to Three program In partnership with Chester School District**

Randolph County Birth to Three program is an ISBE grant funded through Chester Prevention Initiative.

**Services:** This grant-funded program is dedicated to serving pregnant moms and children under the age of three years old. This FREE program offers prenatal education and family and baby resources.

**Contact Info:** Supervisor Rachel Marshall..... (618) 822-0829

**Hours:** Monday-Friday 7:30 am-4:00 pm

\* Located outside of Randolph County but available to Randolph County residents

\*\* Online & National Hotline numbers

**Randolph County Health Department**

*See information under Anchor Agencies.*

**Regional Office of Education (ROE) – Monroe-Randolph Counties**

**Services:** Include truancy intervention, licensure, testing, background checks, professional development, Illinois equivalency (GED) and job search assistance.

**Contact Info:** 134 North Main St., Red Bud, IL 62278 ..... (618) 473-8945

**Website:** <https://www.roe45.net/>

**University of Illinois Extension – Randolph County**

**Services:** Helping people, businesses and communities find answers to grand challenges.

- **4-H Youth Development:** Youth ages 8-18 completing hands-on projects in areas such as health, science, agriculture, and citizenship in a positive environment where they receive guidance from adult mentors and are encouraged to take on proactive leadership roles.
- **Environment:** whether you are managing your family’s farm or you’re an avid supporter of greenspaces in urban areas, interest in expanding our understanding of the natural environment has never been higher.
- **Family Life:** Connecting families of all stages with information and resources that are based on sound science and best practices.
- **Horticulture:** Supplying a vast collection of resources addressing horticultural interests.
- **Illinois Nutrition Education Programs:** Providing nutrition education to individuals and families through the Supplemental Nutrition Assistance Program (SNAP).
- **Local Foods & Small Farms:** Providing information and insight into how fruits, vegetables, and food products move through their life cycle and including information on other topics such as the use of pesticides during the growing season and the practice of composting food waste.
- **Master Gardeners:** if you enjoy learning about gardening and like to share your gardening knowledge, the Master Gardener program may be for you.
- **Master Naturalists:** designed for adults of any age that want to learn about and positively impact their local environment.

**Contact Info:** 1403 Hillcrest Dr., Sparta, IL 62286 ..... (618) 443-4364

**Website:** <https://extension.illinois.edu/fjprw>

**\*Boys and Girls Club of Carbondale**

**Services:** Youth programs include:

- **Leadership and Service:** Keystone Club is the Boys & Girls Club Movement’s most dynamic teen program and affords teens the opportunity to gain valuable leadership and service experience.
- **Education:** PowerHour helps ALL CLUB members achieve academic success by providing homework help, tutoring, remediation, and high-yield learning activities and encouraging members to become self-directed learners.
- **The Arts:** working with local artists, Carbondale Community Arts, Puppitistas and many other artistic avenues to give youth more opportunities to develop or investigate talent.
- **Sports and Recreation:** includes a wide variety of fun, age-appropriate activities that can be played in 5-10 minute bursts.
- **Health and Wellness:** Passport to Manhood promotes and teaches responsibility to Club boys ages 8-17.
- **Summer Programming**

**Contact Info:** 300 East Main St., Suite 4, Carbondale, IL 62902 ..... (618) 457-8877

**Website:** <https://bgcsi.org/>

**\*Centerstone**

*See information under Anchor Agencies.*

\* Located outside of Randolph County but available to Randolph County residents

\*\* Online & National Hotline numbers

**\*Planned Parenthood**

**Services:** Abortion, Birth control, Emergency contraception (morning-after pill), STI testing, treatment and vaccines, HIV services, PrEP for HIV prevention, gender affirming hormone therapy, men’s health services, sexual health education, pregnancy testing and services, reproductive health and preventative services, and miscarriage management.

**Contact Info:** 317 Salem Place, Fairview Heights, IL 62208..... (618) 277-6668  
 200 North Emerald Lane, Carbondale, IL 62901 ..... (800) 230-7526

**Website:** <https://www.plannedparenthood.org/>

**\*The Night’s Shield**

**Services:** The Family Advocacy Center program offers a variety of services to help strengthen families including case management and child advocacy, life skills/coaching, parenting classes/groups, family store with food and clothing, community outreach, and a computer lab.

**Contact Info:** Children’s Shelter - 301 E. Garland St., West Frankfort, IL 62896 ..... (618) 932-6400

**Website:** <https://www.thenightsshield.org/>

**See additional services under Homeless Shelters.**

**\*\*CDC Infant and Toddler Nutrition**

**Website:** <https://www.cdc.gov/infant-toddler-nutrition/index.html>

**\*\*Department Of Children and Family Services (DCFS)**

**Services:** DCFS promotes the safety and well-being of children, youth and families by responding to reports of potential abuse and neglect and, when needed, providing family-centered care and connection to resources.

**Contact Info: For General Inquiries** ..... (312) 814-6800 or (217) 785-2509  
 Child Abuse Hotline ..... (800) 252-2873

**Website:** <https://dcfs.illinois.gov/>

**\*\*Safe2Help Illinois**

**Services:** 24/7 program for students to confidentially get help and to help others for issues like abuse, anxiety, bullying, coping skills, depression, drug and substance abuse, eating disorders, identity, self-injury, social isolation, and suicidal thoughts.

**Contact Info:** ..... (723) 327-2332

**Website:** <https://www.safe2helpil.com/>

**CRISIS**

**ComWell**

**24 Hour Crisis Line** .....(888) 855-0034

**See additional information under Anchor Agencies.**

**\*\*988: National Suicide & Crisis Lifeline**

**Services:** Free and confidential support for people in distress, prevention, and crisis resources for you or your loved ones; available 24 hours a day; English and Spanish.

**Contact Info:** ..... Dial 988  
 Veterans..... Dial 988 then press 1

**\*\*Illinois CARES Line: 24/7**

**Services:** 1) CARES is an around-the-clock mental health crisis line for Illinois residents; 2) CARES can help you find care close to home; and 3) CARES can send a mobile crisis team to make sure you are ok.

**Contact Info:** ..... TTY Dial 711 for relay service | (800) 345-9049

**Website:** <https://www.carescrisisline.com/>

\* Located outside of Randolph County but available to Randolph County residents

\*\* Online & National Hotline numbers

**\*\*Illinois Warm Line**

**Services:** Provides crisis prevention and wellness support to anyone 12+ in Illinois.

**Contact Info:** ..... (866) 359-7953

**Hours:** Monday-Saturday 8:00 am-8:00 pm

**\*\*Crisis Text Line**

- Text “HOME to 741741 from anywhere in the USA, anytime, regarding any type of crisis.
- A live, trained crisis counselor receives the text and responds quickly.
- The volunteer crisis counselor will help you move from a hot moment to a cool moment.

**Website:** <https://www.crisistextline.org/>

**DENTAL CARE**

**LOCAL**

**Barrett Family Dental**

**Services:** Family, cosmetic, and restorative dentistry.

**Contact Info:** 114 Park Plaza Dr., Red Bud, IL 62278 ..... (618) 282-6700

**Hours:** Monday-Wednesday 8:30 am-4:30 pm, Thursday 8:30 am-3:00 pm

**Chester Family Dental**

*(Private insurance)*

**Contact Info:** 1654 State St., Chester, IL 62233 ..... (618) 826-5017

**Hours:** Monday, Tuesday, Thursday 8:00 am-5:00 pm

Wednesday, Friday 7:00 am-4:00 pm CLOSED Saturday and Sunday

**Website:** <https://www.chesterfamilydental.com/>

**Franklin Hometown Dental**

**Contact Info:** 2321 Old Plank Rd., Chester, IL 62233 ..... (618) 826-5416

**Hours:** Monday, Tuesday, Thursday, and Friday 7:30 am-4:00 pm

**Website:** <https://www.franklinhometowndental.com/>

**Park Place Dental Group**

**Contact Info:** 210 South Main St., Red Bud, IL 62278 ..... (618) 282-8282

**Hours:** Monday-Thursday 8:30 am-5:00 pm and Friday 8:00 am-2:00 pm

**Website:** <https://www.parkplacedentalredbud.com/>

**Stephanie E. Graham, DMD**

*(Private insurance)*

**Contact Info:** 530 E. Broadway St., Sparta, IL 62286 ..... (618) 443-4721

**Hours:** Monday, Tuesday and Wednesday 8:00 am-5:00 pm and Thursday 8:15 am-1:00 pm

**Tina Stulce, DDS**

**Contact Info:** 307 South Main St., Red Bud, IL 62278 ..... (618) 282-4466

**Hours:** Tuesday-Friday 8:00 am-5:00 pm CLOSED Monday, Saturday, and Sunday

**Website:** <https://www.tinastulcedds.com/>

\* Located outside of Randolph County but available to Randolph County residents

\*\* Online & National Hotline numbers

**REDUCED FEES**

**\*Dental Safari**

**Services:** Partnering with schools across Southern Illinois, Dental Safari’s mobile dental office is a self-contained, fully functioning dental operatory where children receive the same professional dental care as treatments performed in a traditional dental office. Equipped with the latest dental technology, our pediatric dentists specialize in on-location quality examinations, cleanings, fluoride treatments, and placement of sealants (as needed).

**Contact Info:** .....(618) 993-8333

**Website:** <https://www.dentalsafaricompany.com/>

**\*Paul B. Hanks Dental Clinic (at Lewis & Clark Community College)**

**Services:** Providing low-cost dental services for the community by dental hygiene students of Lewis and Clark under the supervision of licensed dentists and dental hygienists. \$28 flat fee includes all exams, x-rays, and preventive services.

**Contact Info:** 5800 Godfrey Rd., Godfrey, IL 62035 ..... (618) 468-4463

**Website:** <https://www.lc.edu/student-services/health-services/dental-clinic.html>

**\*Shawnee Health Care Dental**

**Services:** Dental services provided to migrant/seasonal workers; Medicare & Medicaid accepted; bilingual.

**Contact Info:** 402 S. Lewis Lane, Carbondale, IL 62901 ..... (618) 519-9200

3115 Williamson County Parkway, Marion, IL 62959 ..... (618) 519-9200

**Website:** <https://www.shawneehealth.com/locations/>

**\*SIU Community Dental Center**

**Services:** Accepts self-pay at discounted rates. Patients of all ages are welcome. We accept cash and/or credit card payments only on day of service.

**Contact Info:** 1365 Douglas Dr., Carbondale, IL 62901 ..... (618) 453-2353

**Website:** <https://academics.siu.edu/health-professions/dental-hygiene/facilities/cdc.php>

**\*SIU Dental School**

*(Accepts Medicaid and most insurance)*

**Services:** Provide extensive dental care at one-third cost of private dentists.

**Contact Info:** 1700 Annex St., Alton, IL 62002 ..... (618) 474-7000

601 James R Thompson Blvd, 2nd floor, Bldg. B, East St. Louis, IL 62201..... (618) 482-6980

**Hours for All:** Monday – Friday, 8:00 am-5:00 pm

**Website:** <https://www.siu.edu/dental/patient-clinics/>

**\*The Smile Factory Clinic**

**Services:** include Complete exams, X-rays, and cleaning; cosmetic dentistry; missing teeth replacement options; fillings, crowns and bridges; Ortho Clear aligners; consultations for smile makeover; extractions and emergency visits. If you are experiencing a dental emergency, call the number below for an appointment. The following are included (1) complete exam; (2) X-rays; (3) planned treatment; and (4) antibiotic and pain medication if needed for \$149 without insurance.

**Who do we care for?** Nursing homes, assisted living, schools, home health care, boarding house, SLJ Smile Studio location and other live in or short-term facilities.

**Contact Info:** 1040 Carlyle Ave., Suite 2a, Belleville, IL.....(618) 509-5337

**Website:** <https://www.thesmilefactoryclinic.com/>

**DIABETES**

**Memorial Hospital of Chester**

**Services:** Group programs and individual nutrition or diabetes counseling.

**Contact Info:** 1900 State St., Chester, IL 62233 ..... (618) 826-4581

**Website:** <https://www.mhchester.com/diabetic-resources>

\* Located outside of Randolph County but available to Randolph County residents

\*\* Online & National Hotline numbers

**Sparta Community Hospital**

**Services:** Individual diabetic counseling and diabetes and nutrition education.  
**Contact Info:** 818 E. Broadway St., Sparta, IL 62286 ..... (618) 443-2177  
**Website:** <https://www.spartahospital.com/services/nutrition-therapy/>

**\*VA Medical Center, Marion**

**Services:** Diabetes - classes for veterans only.  
**Contact Info:** 2401 W. Main St., Marion, IL 62959 ..... (618) 997-5311 ext. 54659  
 Class is held 3rd Thursday of each month from 9:30 am–11:30 am  
**Website:** [https://www.marion.va.gov/services/Diabetes\\_Education.asp](https://www.marion.va.gov/services/Diabetes_Education.asp)

**\*\*American Diabetes Association**

**Services:** Nationwide hotline allows callers to get answers to questions about diabetes.  
**Contact Info:** ..... (800) DIABETES or toll free (888) 342-2383  
**Website:** <https://www.diabetes.org/>

**\*\*Children with Diabetes**

**Services:** Online information for children and adults with diabetes.  
**Website:** <https://childrenwithdiabetes.com/>

**\*\*Illinois Department of Public Health: Diabetes Prevention and Control**

**Services:** Online information for diabetics.  
**Contact Info:** ..... (217) 782-4977  
**Website:** <https://www.idph.state.il.us/diabetes/about.htm>

**\*\*Medline Plus: Diabetes (National Library of Medicine)**

**Services:** Provides education materials in English, Spanish, and other languages.  
**Website:** <https://medlineplus.gov/diabetes.html>

**\*\*National Institute of Diabetes, Digestive & Kidney Diseases**

National Institute of Diabetes, Digestive, and Kidney Diseases  
**Services:** Online resource for diabetes, digestive, and kidney diseases.  
**Contact Info:** ..... (800) 860-8747  
**Website:** <https://www.niddk.nih.gov/>

**DISABILITY RESOURCES**

**HOUSING**

See *HOUSING section*.

**ComWell**

See *information under Anchor Agencies*.

**DHS Family Community Resource Center**

See *information under Anchor Agencies*.

**LINC Inc.**

**Services:** Opening doors for individuals with disabilities utilizing our five core services of Advocacy, Peer support, Information and referral, Transition and Independent living skills.  
**Contact Info:** 332 North Main St., Red Bud, IL 62278 (618) 282-2123  
**Hours:** Monday and Thursday, 9:00 am-4:00 pm  
**Contact Info:** #15 Emerald Terrace, Swansea, IL 62226 ..... (618) 235-9988  
**Hours:** Monday-Thursday, 8:00 am-5:00 pm  
**Website:** <http://www.lincinc.org/>

\* Located outside of Randolph County but available to Randolph County residents

\*\* Online & National Hotline numbers

**\*Archway**

**Services:** Striving to assure that families with young children with diagnosed disabilities, developmental delays, or risk of school failure receive resources and supports that assist them in maximizing their child’s development. Programs include:

- **Early Intervention:** serving children, birth through two years of age, with diagnosed medical conditions or developmental delays.
- **T.I.K.E.S:** serving children, birth to three years of age, and their families who live in Jackson and Perry counties.
- **L.I.F.T:** serving children, birth to five years of age, with mild developmental delays in the counties of Jackson, Perry and part of Union.

**Contact Info:** 2751 West Main St., Carbondale, IL 62901 ..... (618) 529-5944  
 1108 West Willow St., Carbondale, IL 62901 ..... (618) 549-4442

**Website:** <http://www.archwayforchildren.org/>

**\*Centerstone**

*See information under Anchor Agencies.*

**\*Division of Specialized Care for Children (DSCC)**

**Services:** Case management and financial assistance for families and children with special needs covering Bond, Calhoun, Jersey, Madison, Macoupin, Monroe, Montgomery, Randolph, St. Clair, and Washington counties.

**Contact Info:** 1734 Corporate Crossing, Ste. 1, O’Fallon, IL 62269 ..... (800) 322-3722

**Website:** <https://dsc.uic.edu/office/st-clair-regional-office/>

**\*Illinois Guardianship Advocacy Commission**

**Services:** Protect and enforce rights of mentally ill, developmentally disabled, physically handicapped, alcoholic, and disabled aged; provide guardian for those unable to make or communicate personal and financial decisions.

**Contact Info:** Egyptian Regional Office, #7 Cottage Dr., Anna, IL 62906..... (618) 833-4897

**Website:** <https://gac.illinois.gov/>

**\*Illinois Mentor**

**Services:** Provide an array of home and community-based services for adults with intellectual and developmental disabilities in Southern Illinois counties.

**Contact Info:** 9666 Olive Blvd., Suite 380, St. Louis, MO 63132 ..... (314) 453-9981

**Website:** <https://sevitahealth.com/mentor-community-services/services/>

**\*Southern Illinois Center for Independent Living (SICIL)**

**Services:** Provide support to enable persons from all backgrounds to live and work independently, help with aspects of daily living, and offer assistive services in finding/maintaining a job.

**Contact Info:** 2135 West Ramada Lane, Carbondale, IL 62901 ..... (618) 457-3318

**Website:** <http://sicil1.org/>

**DOMESTIC VIOLENCE**

**\*Survivor Empowerment Center**

**Services:** Supporting survivors of domestic and sexual violence (and their children) with shelter and education. (Individuals need to call and be screened before they can advise if a bed is available.)

**Contact Info:** 610 South Thompson St., Carbondale, IL 62901 ..... (618) 549-4807

**24-HOUR HOTLINE** ..... (800) 334-2094

**Website:** <https://www.empoweringsurvivors.org/>

\* Located outside of Randolph County but available to Randolph County residents

\*\* Online & National Hotline numbers

**\*Violence Prevention Center Southwestern Illinois**

**Services:** Provide domestic violence help to individuals with safe shelter and supportive services.  
**Contact Info:** P.O. Box 831, Belleville, IL 62222 ..... (618) 236-2531  
 24 HOUR CRISIS HOTLINE ..... (618) 235-0892  
**Website:** <https://www.vpcswi.org/>

**\*\*Illinois Domestic Violence Hotline**

**Contact Info:** ..... (877) TO END DV | (877) 863-6338  
 ..... TTY (877) 863-6339

**\*\*The National Domestic Violence Hotline**

**Services:** Here to listen without judgment and help you begin to address what is going on in your relationship; free 24/7.  
**Contact Info:** ..... (800) 799-SAFE | (800) 799-7233  
 ..... TTY (800) 787-3224

**EATING DISORDERS**

**\*Branz Nutrition Counseling**

**Services:** Offering supportive space where you can receive compassionate care from Certified Eating Disorder Dietitians who are there to walk alongside your journey of health and healing.  
**Contact Info IL:** 1161 Fortune Blvd Suite 200, Shiloh, IL 62269 ..... (314) 804-1848  
**Contact Info MO:** 10525 Big Bend Rd., Kirkwood, MO 63122 ..... (314) 804-1848  
**Website:** <https://www.branznutritioncounseling.com>

**\*Clementine St. Louis**

**Services:** Helping adolescents of all genders replace eating disorders with new healthy skills through personalized care, family involvement, and educational support.  
**Contact Info:** 7190 Christopher Dr., St. Louis, MO 63129 ..... (314) 806-2090  
**Website:** <https://www.clementineprograms.com>

**\*Embodied Self Counseling, Erin Grumley, LPC**

**Services:** Health at Every Size (HAES) informed therapists understand that to address the food “stuff,” we also need to address the things underneath.  
**Contact Info:** 7346 Manchester Rd., Suite 202, Maplewood, MO 63143 ..... (314) 789-3990  
**Website:** <https://www.eringrumley.com>

**\*McCallum Place**

**Services:** Providing individualized treatment for eating disorders in children, teens, and adults through multiple levels of intensive care.  
**Contact Info:** 231 W. Lockwood Ave., Ste 202, St. Louis, MO 63119 ..... (855) 522-1994  
**Website:** <https://www.mccallumplace.com>

**\*McDaniel Nutrition Therapy**

**Services:** Anorexia, bulimia, binge eating disorder, orthorexia, disordered eating - if you are ready for recovery from your eating disorder or looking to maintain your recovery, we can help you on your journey.  
**Contact Info:** 225 S. Meramec Ave Apt 204, St. Louis, MO 63105 ..... (314) 530-7400  
**Website:** <https://www.mcdanielnutrition.com>

**\*Saint Louis Behavioral Medicine Institute**

**Services:** Our experienced staff provides treatment for eating disorders in a respective therapeutic environment.  
**Contact Info:** 331 Salem Place, Suite 225-A, Fairview Heights, IL 62208 ..... (618) 825-0051  
**Website:** <https://www.slbmi.com>

\* Located outside of Randolph County but available to Randolph County residents

\*\* Online & National Hotline numbers

**\*St. Louis Eating Recovery Therapy**

**Services:** Therapy sessions offered to individuals, couples, and families. Sessions run 50 min. and cost \$120.  
**Contact Info:** 140 Prospect Ave., Kirkwood, MO 63122 ..... (314) 896-0810  
**Website:** <https://www.eatingrecoverytherapy.com>

**\*\*Equip Health – Virtual Eating Disorder Care**

**Services:** Eating disorder treatment that works – delivered at home. Virtual, evidence-based care is designed to achieve full recovery.  
**Contact Info:** ..... (855) 449-9809  
**Website:** <https://www.equip.health>

**EDUCATION**

**ALTERNATIVE, CAREER AND TECHNICAL EDUCATION**

**Career Center of Southern Illinois**

High School Programs

**Alternative Program:** Offers a clean slate for students who are seeking a different high school experience.  
**Career & Technical Education:** CCSI draws students from seven participating school districts, providing hands-on, real-life career training for juniors and seniors who want to enter the workforce sooner and/or learn a specific trade or skill.

Nursing Programs

**Practical Nursing (LPN):** Eleven months of classroom theory and clinical experience. The course is full-time, Monday through Friday for an average of 35-40 hours per week, excluding holidays.

**Certified Nurse Assistant Program (CNA):** Offering top-notch training to future CNAs with hands on experience and quality instruction that fits with the demands of day-to-day life. CNA class is offered year-round.

**Contact Info:** 6137 Beck Rd., Red Bud, IL 62278 ..... (618) 473-2222  
**Website:** <https://gotoccsi.org/>

**Monroe Randolph Red Brck School \*Regional Safe School\***

**Contact Info:** 134 North Main St., Red Bud, IL 62278 ..... (618)473-8945

**Perandoe Educational Program – SWICC Campus**

**Services:** Assuring that all children with disabilities in the bi-county area receive a free and appropriate education as prescribed by State and Federal law.

**Contact Info:** 500 W. South 4th St, Suite A, Red Bud, IL 62278..... (618) 282-7228

**Perandoe Special Education District Office**

**Contact Info:** 1525 Locust, St., Red Bud, IL 62278 ..... (618) 282-6251

**GED/OTHER**

**Regional Office of Education (ROE) Monroe-Randolph Counties**

**Services:** Include truancy intervention, licensure, testing, background checks, professional development, Illinois equivalency (GED), and job search assistance.

**Contact Info:** 134 North Main St., Red Bud, IL 62278 ..... (618) 473-8945  
**Website:** <https://www.roe45.net/>

\* Located outside of Randolph County but available to Randolph County residents

\*\* Online & National Hotline numbers

**\*Southwestern Illinois College – Youth Services**

**Youth Empowerment Support Services (Y.E.S.S) Services:** Serving those who are 16-24 years of age, who are not attending school and meet at least one of the following criteria: 1) did not graduate high school; 2) parenting or pregnant; 3) subject to juvenile justice system; 4) subject to adult justice system; 5) homeless, runaway or in the foster care system; or 6) an individual with a disability. Programs include high school diploma, one-on-one career and educational coaching, job readiness skills, job placement and transitional assistance into post-secondary education, vocational training or military.

**Contact Info:** Red Bud Campus, Rm 173, 500 West South 4th St., Red Bud, IL 62278 ..... (618) 282-6682

**PRIVATE SCHOOLS**

**St. John Lutheran School**

**Contact Info:** 302 West Holmes St., Chester, IL 62233 ..... (618) 826-4345

**St. John the Baptist Catholic School**

**Contact Info:** 519 Hazel St., Red Bud, IL 62278 ..... (618) 282-3215

**St. John’s Lutheran School**

**Contact Info:** 808 South Main St., Red Bud, IL 62278 ..... (618) 282-3873

**St. Mark’s Lutheran School**

**Contact Info:** 504 North James St., Steeleville, IL 62288 ..... (618) 965-3838

**St. Mary’s Catholic School**

**Contact Info:** 835 Swanwick St., Chester, IL 62233 ..... (618) 826-3120

**Trinity Lutheran School**

**Contact Info:** 10247 South Prairie Rd., Red Bud, IL 62278 ..... (618) 282-2881

**PUBLIC SCHOOLS**

**Chester Elementary School**

**Contact Info:** 650 Opdyke St., Chester, IL 62233 ..... (618) 826-2354

**Chester High School**

**Contact Info:** 1901 Swanwick St., Chester, IL 62233 ..... (618) 826-2302

**Coulterville Elementary, Jr & High School**

**Contact Info:** 101 West Grant St., Coulterville, IL 62237 ..... (618) 758-2881

**Evansville Attendance Center**

**Contact Info:** 701 Oak St., Evansville, IL 62242 ..... (618) 853-4411

**Prairie Du Rocher Elementary School**

**Contact Info:** 714 Middle St., Prairie Du Rocher, IL 62277 ..... (618) 284-3530

**Red Bud Elementary School**

**Contact Info:** 200 West Field Dr., Red Bud, IL 62278..... (618) 282-3858

**Red Bud High School**

**Contact Info:** 815 Locust St., Red Bud, IL 62278 ..... (618) 282-3826

**Sparta High School**

**Contact Info:** 205 West Hood St., Sparta, IL 62286..... (618) 443-4341

\* Located outside of Randolph County but available to Randolph County residents

\*\* Online & National Hotline numbers

**Sparta Lincoln School**

Contact Info: 203a Dean Ave., Sparta, IL 62286 ..... (618) 443-5331

**Steeleville Elementary School**

Contact Info: 609 South Sparta St., Steeleville, IL 62288..... (618) 965-3469

**Steeleville High School**

Contact Info: 701 South Sparta St., Steeleville, IL 62288..... (618) 965-3432

**POST-SECONDARY EDUCATION**

**\*John A. Logan College (JALC)**

Services: Public community college.

Contact Info: 700 Logan College Dr., Carterville, IL 62918 ..... (618) 985-2828

Website: <https://www.jalc.edu/>

**\*Rend Lake College (RLC)**

Services: Public community college.

Contact Info: 468 North Ken Gray Pkwy, Ina, IL 62846 ..... (618) 437-5321

Website: <https://www.rlc.edu/>

**\*Southern Illinois University (SIU)**

Services: Public university.

Contact Info: 1263 Lincoln Dr., Carbondale, IL 62901 ..... (618) 453-2121

Website: <https://siu.edu/>

**\*Southern Illinois University Edwardsville (SIUE)**

Services: Public university.

Contact Info: 6 Hairpin Drive, Edwardsville, IL 62026 ..... (618) 650-5555

Website: <https://siue.edu>

**\*Southwestern Illinois College (SWIC)**

Services: Public community college.

Contact Info: 2500 Carlyle Ave., Belleville, IL 62221 ..... (618) 235-2700

Website: <https://www.swic.edu/>

**ELECTRONICS**

**Gadget Ambulance LLC**

Services: Provide affordable and quality repairs on phones, tablets, gaming consoles, computers, and more.

Contact Info: 134 West Broadway St., Sparta, IL 62286 ..... (618) 615-6315

Website: <https://www.gadgetambulancelc.com/>

**\*PCs for People**

Services: PCs for People is a non-profit working to get low-cost quality computers and internet into homes of individuals, families, and non-profits with low income.

Contact Info: 100 Florida Ave., Belleville, IL 62221 ..... (618) 215-3787

Website: <https://www.pcsforpeople.org/>

\* Located outside of Randolph County but available to Randolph County residents

\*\* Online & National Hotline numbers

## EMPLOYMENT

### EMPLOYMENT AGENCIES

#### \*Express Employment Professionals

**Contact Info:** 1301 West Main St., Carbondale, IL 62901 ..... (618) 457-1001  
 314 Fountains Pkwy, Ste B, Fairview Heights, IL 62208 ..... (618) 726-2140  
 1107 North Perryville Blvd, Perryville, MO 63775 ..... (573) 517-4444  
**Website:** <https://www.expresspros.com/>

#### \*Hire Level

**Contact Info:** 3911 West Ernestine Dr., Marion, IL 62959 ..... (618) 993-9675  
 5214 Chain of Rocks Rd., Edwardsville, IL 62025 ..... (618) 655-1212  
**Website:** <https://hirelevel.com/>

#### \*Labor Finders

**Contact Info:** 4024 Butler Hill Rd, Ste. 10, St. Louis, MO 63129 ..... (636) 287-3709  
**Website:** <https://www.laborfinders.com/>

#### \*Proman Staffing

**Contact Info:** 735 Ste. Genevieve Dr., Ste. Genevieve, MO ..... (573) 883-9900  
**Website:** <https://www.promanstaffing.com/>

#### \*StaffQuick

**Contact Info:** 450 N. Kaskaskia St., Nashville, IL 62263 ..... (618) 464-0250  
**Website:** <https://staffquickjobs.com/>

### JOB POSTINGS

#### County Journal Job Hub

**Services:** Local job postings.  
**Facebook Page:** <https://www.facebook.com/countyjournaljobhub>

#### \*\*Work for Illinois

**Services:** State of Illinois career opportunities.  
**Website:** <https://work4.illinois.gov/>

### MISCELLANEOUS

#### Southwestern Illinois WorkNet Center

**Services:** Workforce Investment and Opportunity Act (WIOA) grant services: career planning, job search, and resume building assistance available at no cost for all. Training and college tuition assistance for eligible customers.  
**Contact Info:** 2515 State Street, Chester, IL 62233 ..... (618) 826-4709  
**Website:** <https://www.illinoisworknet.com/>

#### \*MERS Goodwill St. Clair County Career and Workforce Development Center

**Services:** Provides opportunities for persons with barriers to employment to work and live more independently in the community. Services include job readiness, vocational assessment, job finding assistance, Welfare to work programs, veteran employment programs, WIOA programs, group counseling, individual counseling, and psychological assessment.  
**Contact Info:** 5720 North Belt West, Ste. 44, Belleville, IL 62226 ..... (618) 257-1080  
**Website:** <https://mersgoodwill.org/stores/career-center-belleville/>

\* Located outside of Randolph County but available to Randolph County residents

\*\* Online & National Hotline numbers

**ENERGY ASSISTANCE**

**Western Egyptian Economic Opportunity Council, Inc.**

*See information under Anchor Agencies.*

**EPILEPSY**

**\*Epilepsy Foundation of Greater Southern Illinois**

**Services:** The mission of the Epilepsy Foundation is to improve the lives of people affected by epilepsy through education, advocacy, research and connection.

**Contact Info:** 3515 North Belt West, Belleville, IL 62226 ..... (618) 236-2181

**Website:** <http://www.efgreatersil.org/>

**FIRE DEPARTMENTS**

**Baldwin Community Fire Protection District**

**Contact Info:** 309 West Myrtle, Baldwin, IL 62217 ..... (618) 785-2520

**Chester Fire Department**

**Contact Info:** 1330 State St., Chester, IL 62233 ..... (618) 826-2211

**Coulterville Volunteer Fire Department – Fire Protection District**

**Contact Info:** 215 East Maple, Coulterville, IL 62237 ..... (618) 758-2221

**Ellis Grove Fire Department**

**Contact Info:** 501 Eggemeyer Plaza, Ellis Grove, IL 62241 ..... (618) 859-3473

**Evansville Fire Department**

**Contact Info:** 505 Market St., Evansville, IL 62242 ..... (618) 853-2213

**Percy Volunteer Fire Department**

**Contact Info:** 207 East Pine St., Percy, IL 62272 ..... (618) 497-8242

**Prairie Du Rocher Fire Department**

**Contact Info:** 207 Henry St., Prairie Du Rocher, IL 62277 ..... (618) 284-7141

**Red Bud Fire Department**

**Contact Info:** 200 East Market, Red Bud, IL 62278 ..... (618) 282-2358

**Sparta Fire Department**

**Contact Info:** 107 East Jackson, Sparta, IL 62286 ..... (618) 443-2917

**Steeleville Volunteer Fire Department**

**Contact Info:** 107 West Broadway, Steeleville, IL 62288 ..... (618) 965-9251

**Tilden Volunteer Fire Department**

**Contact Info:** 650 Butler St., Tilden, IL 62292 ..... (618) 587-2351

\* Located outside of Randolph County but available to Randolph County residents

\*\* Online & National Hotline numbers

**FOOD**

**FOOD PANTRIES & RESOURCES**

**Chester Area Christian Pantry**

**Services:** Available to Randolph County residents ONLY.  
**Contact Info:** 128 A Koeneman Acres, Chester, IL 62233 ..... (618) 826-3141  
**Hours:** Wednesday 9:00 am-2:00 pm

**Coulterville Unit School District 1**

**Services:** Coulterville community members.  
**Contact Info:** 101 W. Grant St. (use north gym doors, please do not arrive before 3:00 pm) (618) 758-2881  
**Hours:** Wednesdays 3:00 pm-5:00 pm

**Food on the Move – Steeleville Senior Center**

**Services:** Walk thru food program for individuals in Illinois and Missouri.  
**Contact Info:** 107 W. Broadway, Steeleville, IL 62288 (behind City Hall)  
**Hours:** 1st Friday each month. 12:00-1:30 pm No personal verification required

**Musketeer Market**

**Services:** Available to RBHS families in need.  
**Contact Info:** Red Bud High School, 815 Locust St., Red Bud, IL 62278 ..... (618) 282-3826

**RBES Royal Table**

**Services:** Available to RBES families in need.  
**Contact Info:** Red Bud Elementary School, 500 W. Field Dr., Red Bud, IL 62278 ..... (618) 282-3858

**Red Bud Food Pantry**

**Services:** Must call the Thursday prior by 5 pm.  
**Contact Info:** Red Bud Bible Church, 1445 West Market, Red Bud, IL 62278 ..... (618) 567-1652  
**Hours:** Open two Saturdays each month, may visit once per month.

**Sparta Food Pantry**

**Services:** Must live in Sparta School District, bring ID and letter with current address, and fill out paperwork.  
**Contact Info:** 360 East Broadway St., Sparta, IL 62286 ..... (618) 443-2025  
**Hours:** Tuesday and Thursday 10:00 am-12:00 pm

**St. John Lutheran Church – Sparta, IL**

**Services:** Open to anyone.  
**Contact Info:** 1110 North Market St., Sparta, IL 62286 ..... (618) 443-3634  
**Hours:** Tuesday and Thursdays 10:00 am–12:00 pm

**St. Peter UCC Church**

**Services:** Blessing box that holds non-perishables - everyone is welcome to utilize this at all times. Also offering free seasonal clothing from 1:30 pm-3:00 pm on Tuesdays and Thursdays. Appointments may be made by calling.  
**Contact Info:** 403 Madison St., Red Bud, IL 62278 ..... (618) 282-2417  
 Alternate phone number ..... (618) 782-0210

**Steeleville Community Food Pantry**

**Services:** Bring ID or proof of Steeleville or Percy residency. Can get food every other week.  
**Contact Info:** 303 N. Mulberry, Steeleville, IL 62288 ..... (618) 965-3119  
**Hours:** Tuesdays 9:00 am-12:00 pm \* must be signed in by 11:30 am

\* Located outside of Randolph County but available to Randolph County residents

\*\* Online & National Hotline numbers

**Tilden Food Pantry**

**Services:** No geographical boundaries to attend.  
**Contact Info:** 701 North Centre, Tilden, IL 62292 ..... (618) 443-8178  
**Hours:** 1st and 3rd Tuesday of each month 11:00 am-12:30 pm

**Western Egyptian Economic Opportunity Council, Inc.**

**Services:** Randolph County residents ONLY. Must provide proof of residency.  
**Contact Info:** 1820 N. Market, Bldg A, Sparta, IL 62286..... (618) 443-5231  
**Hours:** By appointment only.

**\*\*Hunger Hotline**

**Services:** Referrals to food pantries throughout the state of Illinois. Provide assistance with applications for food stamps, Medicaid, cash assistance, and other income support programs.  
**Contact Info:** ..... (800) 359-2163

**SUPPLEMENTAL NUTRITION ASSISTANCE PROGRAM (SNAP)**

**DHS Family Community Resource Center**

*See information under Anchor Agencies.*

**WOMEN, INFANTS AND CHILDREN (WIC)**

**Randolph County Health Department**

*See information under Anchor Agencies.*

**GAMBLING**

**\*\*National Council on Problem Gambling (NCPG)**

**Services:** Connecting people looking for assistance with a gambling problem to local resources.  
**Contact Info:** ..... (800) 522-4700  
**Website:** <https://www.ncpgambling.org/>

**GOVERNMENT**

**Randolph County Courthouse**

**Contact Info:** 1 West Taylor St., Chester, IL 62233 ..... (618) 826-5000

- **Circuit Clerk** ..... ext. 194
- **Coroner** ..... ext. 218
- **County Clerk** ..... ext. 115
- **Economic Development** ..... ext. 221
- **E-911** ..... ext. 219
- **Land Management** ..... ext. 130
- **State’s Attorney** ..... ext. 193
- **Supervisor of Assessments** ..... ext. 192
- **Treasurer** ..... ext. 224

**Hours:** Monday-Friday 8:00 am-4:00 pm

**Website:** <https://randolphcountyil.gov/>

**Additional Services:**

- **Animal Control:** Enforces state and local laws and ordinances to protect the safety and right of the public and the welfare of animals. .... (618) 826-5484
- **Emergency Management:** Responsible for managing resources and acquiring assets during and after a disaster; also provides disaster preparation training. .... (618) 826-5484
- **General Assistance (SSI):** Works with people who have pending Supplemental Security Income (SSI) cases ..... (618) 443-3311

\* Located outside of Randolph County but available to Randolph County residents

\*\* Online & National Hotline numbers

- **Health Department:** See information under Anchor Agencies ..... (618) 826-5007
- **Highway Department:** Responsible for county-designated roads, including planning, design, construction, maintenance, oiling and chipping, mowing, snow removal, engineering, collaboration with municipal and road district jurisdictions regarding road improvements. .... (618) 443-3213
- **Sheriff:** ..... (618) 826-5484
- **Superintendent of Schools:** ..... (618) 473-8945

**\*Supplemental Security Income (SSI) \***

**Services:** Apply for the following:

**BENEFITS**

- **Retirement:** You worked and paid Social Security taxes
- **Family:** Your current or ex-spouse worked and paid Social Security taxes
- **Disability:** You have a condition and expect it to affect your ability to work for a year or more or will result in death.
- **Survivor:** Your spouse or ex-spouse worked and paid Social Security taxes before they died.
- **Lump-Sum Death Payment:** Your spouse worked and paid Social Security taxes before they died and you are the surviving spouse

**SUPPLEMENTAL SECURITY INCOME**

- **Supplemental Income for Disability:** You're blind or have a disability and it's hard to pay for essentials like food, clothing and a home.
- **Supplemental Security Income for Age 65+:** You're 65 or older and it's hard to pay for essentials like food, clothing, and a home.

**Contact Info:** 250 West Cherry St., Room 104, Carbondale, IL 62901 (800) 772-1213  
 227 W. Pointe Dr., Belleville, IL 62226 ..... (877) 405-0471

**Website:** <https://www.ssa.gov/>

**GRIEF SERVICES**

**Griefshare**

**Services:** Provide guidance and tips, leading to relief, comfort, and peace of mind. Find local support groups near you and online.

**Website:** <https://www.griefshare.org/>

**\*Heartlinks Grief Center**

**Services:** A program of Family Hospice, assists grieving children, individuals, families, and groups through individual and family counseling, peer support groups and other supportive community programs regardless of ability to pay. "Bridges to Healing" a support group for anyone grieving a suicide loss.

**Contact Info:** 4820 West Main St., Belleville, IL 62226..... (618) 573-1801

**Website:** [www.myheartlinks.com](http://www.myheartlinks.com)

**\*Hospice of Southern Illinois, Inc.**

**Services:** Coping with Grief is a FREE educational service provided to the community at various times of the year. Bereavement counselors available.

**Contact Info:** Belleville, IL..... (618) 222-5905

Marion, IL ..... (618) 997-3030

**Website:** <https://hospice.org/ourcare/grief-support/>

\* Located outside of Randolph County but available to Randolph County residents

\*\* Online & National Hotline numbers

## HEARING

### DEAF

#### **Professional Hearing Associates**

**Services:** Board certified Doctors of Audiology can help start your journey to clearer hearing and improved quality of life.

**Contact Info:** Memorial Hospital Specialty Clinic, 1900 State Street, Chester, IL 62233  
..... (618) 826-4581 ext. 1366

**Website:** <https://professionalhearingassociates.com/>

#### **\*Lions of Illinois Foundation**

**Services:** The Lions of Illinois Hearing Aid Bank (HAB) provides assistance to needy individuals who cannot afford to purchase a hearing aid or do not qualify to receive an aid from the State agencies. Hearing aids are collected and received in the Recycling Program through public drop boxes, collection by Lions Clubs in your community, or by public donation. Once received, the aids are sorted for usefulness, reconditioned and coded, then returned to the HAB.

**Website:** <https://lionsofillinoisfoundation.org/hearing/>

#### **\*\*Alexander Graham Bell**

**Services:** For parents of children who are deaf or hard of hearing.

**Contact Info:** ..... (202) 337-5220

**Website:** <https://agbell.org/>

#### **\*\*State of Illinois Deaf and Hard of Hearing Commission**

**Services:** Website providing statewide resources including advocacy, education, equipment, statement employment and ADA information for the Deaf and Hard of Hearing in Illinois.

**Website:** <https://idhhc.illinois.gov/resources/statewide-resources.html>

### MISCELLANEOUS

#### **\*\*CaptionCall**

**Services:** Federally funded program providing phone and services at no cost to benefit people with hearing loss.

**Contact Info:** ..... (877) 557-2227

**Website:** <https://captioncall.com/>

#### **\*\*Illinois Telecommunications Access Corporation (ITAC)**

**Services:** Provide FREE phone equipment to Illinois residents who are deaf, hard of hearing, speech disabled or deaf/blind.

**Contact Info:** 3001 Montvale Dr., Ste. A, Springfield, IL 62704 ..... (800) 841-6167

**Website:** <https://www.itactty.org/>

## HEART

*See additional information under Medical-Cardiology*

#### **\*\*American Heart Association**

**Services:** Online information for individuals with heart disease.

**Website:** <https://www.heart.org/>

\* Located outside of Randolph County but available to Randolph County residents

\*\* Online & National Hotline numbers

## HISPANIC RESOURCES

### Puentes de Esperanza

**Services:** Helps Spanish-speaking residents in Southern Illinois find community resources that can help them establish citizenship, build a family, find employment and more.

**Contact Info:** 8 Executive Dr., Ste. 200, Fairview Heights, IL 62208 ..... (618) 688-4727  
 Chester Office, 1300 State St. Chester, IL 62233 ..... (618) 688-5052

**Website:** <https://hoyleton.org/building-bridges/>

## HOME HEALTH SERVICES

### At Home Health Care – Sparta Community Hospital

*(Medicare certified)*

**Services:** Skilled nursing care, physical therapy, occupational therapy, telehealth services, speech and language therapy, home health aide services, and medical social work services.

**Contact Info:** 818 East Broadway St., Sparta, IL 62286 ..... (618) 443-2390

**Website:** <https://www.spartahospital.com/services/home-healthcare/>

### Red Bud Regional Home Care

**Services:** Alzheimers and dementia care, behavioral health nursing, care transitions, chronic disease management, fall prevention, heart disease, home health aides, infusion therapy, medical social work, medication management, nutritional consult, occupational therapy, pain management, patient/caregiver training, Personal Emergency Response System (PERS), physical therapy, skilled nursing, transition from hospital discharge to home health, speech therapy, and wound, ostomy and continence nursing.

**Contact Info:** 115 W. Market St., Ste. 101, Red Bud, IL 62278 ..... (618) 282-3338

**Website:** <https://lhcgroupp.com/locations/red-bud-regional-home-care>

### \*Amedisys Home Health

**Contact Info:** 1901 Frank Scott Pkwy, Suite 4, O’Fallon, IL 62269 ..... (618) 622-8854

**Website:** <https://locations.amedisys.com/il/o-fallon/>

### \*Southwestern Illinois Visiting Nurse Association – Services for Seniors

*(Accepts Medicaid)*

**Services:** Designated case coordination unit for residents of the following Illinois counties – Bond, Clinton, Madison, Monroe, Randolph, St. Clair, Washington. Homemaking services, home-delivered meals, adult day services, medication management, well-being checks, equipment to ensure safety, emergency response systems, pharmaceutical assistance, housing options, and respite care options.

**Contact Info:** #7 Executive Woods, Swansea, IL 62226 ..... (618) 236-5800 or (800) 642-5429

**Website:** <https://sivna.com/>

### \*\*Illinois Department of Public Health – File a Health Care Complaint

**Services:** Report complaints or receive information about IL Medicare certified home health agencies.

**Contact Info:** ..... (800) 252-4343

**Website:** <https://dph.illinois.gov/topics-services/health-care-regulation/complaints.html>

## HOMELESS SERVICES

### Regional Office of Education (ROE) Monroe-Randolph Counties

**Services:** Help homeless children and youth to be able to attend school.

**Contact Info:** 134 N. Main St., Red Bud, IL 62278 ..... (618) 473-8945

**Website:** <https://www.roe45.net/services.html>

School District Homeless Liaison Locator: <https://www.isbe.net/Pages/Homeless-Liaison-Contact-Information.aspx>

\* Located outside of Randolph County but available to Randolph County residents

\*\* Online & National Hotline numbers

**Southern Illinois Coalition for the Homeless**

**Services:** This is not an emergency shelter but they can assist client in locating affordable housing and provide supportive services in 24 counties. Specific programs include:

- **HUD Permanent Supportive Housing program** – offers participants a wide array of services and leasing assistance for one, two and three-bedroom houses and apartments that are scattered throughout the service area. **To be eligible, participants must be homeless and at least one member of the household must have a disability.**
- **HUD Transitional Housing program** – provides services and leasing assistance to help households move on to and maintain permanent housing. Program participants may receive services and leasing assistance for up to 24 months. **To be eligible, participants must be homeless or at imminent risk of becoming homeless.**
- **Homeless to Homebuyer program** – provides an opportunity for individuals and families who are low income and who are homeless or at risk of becoming homeless, to become homeowners. **Selection is based on desirability to live in the home and community as well as demonstrated potential for home ownership.**
- **HUD Rapid Rehousing program** – provides short-term rental and move in assistance with supportive services to help with long-term housing stability. **To be eligible, participants must be homeless and need only short-term assistance to quickly exit homelessness.**
- **Phoenix Project** – features eight one-bedroom permanent supportive housing apartments for singles. Individuals must be homeless or at risk of becoming homeless. **The primary target population is ex-offenders who are re-entering society and who are in recovery for substance abuse/alcohol dependency.** Individuals who are sex offenders or served time for violent crimes would not be eligible. Tenants are required to hold jobs, participate in recovery programs and pay rent on a sliding scale.
- **Supportive Services** – individualized supportive services are provided to participants in our housing programs. These services are customized to address barriers and needs to help the participant and household reach housing stability and self-sufficiency. Case managers conduct home visits weekly to monthly and provide monthly group training and counseling programs.

**Contact Info:** 1009 W. Cherry St., Marion, IL 62959 ..... (618) 993-0094  
**Website:** <https://www.sihomelesscoalition.org>

**Western Egyptian Economic Opportunity Council, Inc.**

*See information under Anchor Agencies.*

**\*Carbondale Warming Center**

**Services:** Providing refuge from extreme temperature; a warming center in the winter and a cooling center in the summer.

**Contact Info:** 608 E. Colle St., Carbondale, IL 62901 ..... (314) 312-1428

**\*The Center for Empowerment and Justice**

**Services:** Free Wi-Fi, coffee, and computer use; free laundry service, court support, bike repair, computer repair, and print shop.

**Contact Info:** 213 North Washington St., Carbondale, IL 62901..... (618) 457-2777

**HOMELESS SHELTERS, DOMESTIC SHELTERS & TRANSITIONAL HOUSING**

**\*Amen Center**

**Services:** A transitory shelter providing food, clothing and assistance finding work for those in need. Sometimes individuals or families experience difficult economic situations and just need assistance to get back on their feet. In other cases, problems with alcoholism, addictions, medical and/or legal problems cause hardships. A person need not be a Christian to come to the center, but they are expected to behave in a way that respects the progress of others in the facility and not become a stumbling block to them.

**Contact Info:** 3600 St. Hwy Rt. N., Advance, MO 63730 ..... (573) 794-2900  
**Website:** <https://www.amencenter.com>

\* Located outside of Randolph County but available to Randolph County residents

\*\* Online & National Hotline numbers

**\*Charity Home Ministries**

**Services:** Providing safe, stable, and appropriate transitional housing, education, mentoring and resource connections to pregnant or parenting teens.  
**Contact Info:** P.O. Box 23426, Belleville, IL 62221 ..... (618) 300-0771  
**Website:** <https://charitihome.org>

**\*Christian Community Compassion Center (aka the 4 C’s)**

**Services:** The homeless shelter is currently five sleeping rooms, a commons area, two full baths, laundry and kitchen/dining facilities. These rooms are provided for those in need due to a house fire, those waiting for public housing, people suffering from job and/or housing loss and families in crisis. Individuals may be housed from 1-30 days. Individual must sign an agreement/contract with 4 C’s.  
**Shelter #:** ..... (618) 252-2374  
**Contact Info:** 632 N. Jackson St., Harrisburg, IL 62946..... (618) 252-3931  
**Website:** <https://www.4cshbg.org>

**\*Family Life Shelter**

**Services:** Shelter to help people get on their feet. Can help with IDs, jobs, vehicles & homes. Open 24 hrs.  
**Requirements:**

- Guests need to be mentally stable (not a threat to themselves or others) and physically able to care for themselves
- We cannot accept people on parole
- We cannot accept registered sex offenders
- We cannot accept children
- We cannot accept pets
- We do not require a background check

**Contact Info:** 12580 N. Sparrow Lane, Mt. Vernon, IL 622864..... (618) 242-2002  
**Website:** <https://familylifemtv.com/family-life-shelter>

**\*Good Samaritan House**

**Services:** Provide unhoused mothers and their children with guidance, shelter, and hope.  
**Contact Info:** 1825 Delmar Ave., Granite City, IL 62040..... (618) 300-7255  
**Website:** <https://www.goodsamhouse.org/>

**\*Good Samaritan Ministries**

**Services:** Provides emergency shelter, transitional living program, soup kitchen, food pantry, and emergency assistance.  
**Contact Info:** 701 South Marion St., Carbondale, IL 62901 ..... (618) 457-5794  
**Website:** <https://goodsamcarbondale.com/>

**\*Lifeboat Alliance**

**Services:** Our facility serves as a place of refuge for men, women and families. We provide the tools and support necessary for our guests to become self-sufficient. Guests have access to caseworkers daily and are provided transportation for job interviews, work and medical appointments. Three meals a day are provided as well as access to a fully equipped laundry room. (Individual needs to call on their own behalf)  
 How to become a guest:

- Complete the electronic prescreening application and background consent form found at: [https://lifeboatalliance.org/how\\_to\\_become\\_a\\_guest](https://lifeboatalliance.org/how_to_become_a_guest)
- Copy of ID
- Notify the shelter of incoming application at 618-244-4088
- Email or fax application to Lifeboat alliance:
- Email: [lifeboatalliance@gmail.com](mailto:lifeboatalliance@gmail.com)
- Caseworker will call you with response to background
- Make arrangements to get guests to shelter

**Contact Info:** 1717 Jefferson Ave., Mt. Vernon, IL 62864..... (618) 244-4088  
**Website:** <https://lifeboatalliance.org/>

\* Located outside of Randolph County but available to Randolph County residents  
 \*\* Online & National Hotline numbers

**\*Lighthouse Shelter**

**Services:** Emergency shelter for those without a home and in need of temporary shelter.

General Information:

- All clients will be subject to background checks prior to admission to ensure there are no outstanding warrants or a history of violence.
- A zero tolerance policy is in place for all alcohol and drugs.
- We are also a smoke free facility.
- Our facility is accessible to those with disability and have staff on duty at all times.
- We are a 30-day facility. If the resident is making progress towards permanent housing, the time limit may be extended.
- We also provide case management by developing an individual plan for each client to address the needs of housing, employment, medical needs, counseling and any identified need for social services.

**Contact Info:** 1101 North Madison St., Marion, IL 62959..... (618) 993-8180

**Website:** <http://www.thelighthouseshelter.com/>

**\*Pathway Ministries**

**Services:** Residential services include emergency shelter, residential programs and pathway houses for both men and women. See below requirements:

**Emergency Overnight Shelter**

- Check in 2:30-5:30 pm (first time guests may check in at any time 24/7)
- Includes breakfast, lunch, supper, clothing, shower, chapel service and overnight shelter
- Shower & clothes available any time before 6:00 pm or call if after 6:00 pm
- Join us for lunch or dinner and a chapel service daily at 11:30 am & 6:00 pm

**Requirements:** Must be either a male at birth, age 18 or older, or a female at birth, age 18 or older and in need immediate assistance:

- We offer a drug and alcohol-free environment
- We are unable to adequately accommodate and care for anyone with serious disabilities including walkers, wheelchairs, oxygen, etc. Guests must be able to shower, clothe, and feed themselves
- All guests on parole must be approved ahead of time; and
- Must comply with our Community Living Guidelines

**Residential Programs**

- **Next Step Program:** Short-term (3 months minimum) with Life Skills and Vocational focus
- **Renewal Program:** Longer-term (9-12 months) with Recovery and Life Change focus
- **ReConnections Program:** Short-term (3 month minimum) with a Prison Re-Entry focus
- **Graduate Program:** (Up to 3 years) with a Transitional focus

**Requirements:** Must be either a male at birth and identify as a male, or a female at birth and identify as a female.

- Must be serious about making a positive life change; and
- Must be willing to commit for the length of the program

**Contact Info:** 601 SW Adams, Peoria, IL 61602 ..... (309) 676-6416

**Website:** <https://www.pathwaypeoria.org>

\* Located outside of Randolph County but available to Randolph County residents

\*\* Online & National Hotline numbers

**\*Society of St. Vincent de Paul Ministries**

**Services:** Services are available to individuals located in St. Clair County. If you are homeless and at their center, you are considered to be in St. Clair County.

- **Daily Soup Kitchen:** Free meals offered 7 days per week, 52 weeks per year.
  - **Outreach Ministry Center:** Multi-use space offering programs and services such as Person Identification Program, transportation, homeless services, budgeting classes, resume writing, applications for housing and Social Security, computer center, job skills classes, and job search assistance. Gear Up/Career Gear clothing assistance, prison re-entry services, utility and rental assistance, and more.
  - **Crisis Nite Center:** Dusk-to-Dawn OverNite Center is open from 7:00 pm-7:00 am daily as a safe haven for all who come to spend the night and serves as a bridge to other services.  
**Website/referral form:** <https://svdpsouthil.org/crisis-nite-center>  
 Crisis Nite Center Phone: ..... (618) 646-9060
  - **Thrift Store Ministry:** Offers low-cost clothing, household goods, and other merchandise.
  - **Mobile Soup Bus:** Goes out into neighborhoods to feed the hungry.
- Contact Info:** 3718 State St., East St. Louis, IL 62205 ..... (618) 394-0126  
**Website:** <https://svdpsouthil.org/>

**\*Survivor Empowerment Center**

**Services:** Supporting survivors of domestic and sexual violence (and their children) with shelter and education. (Individuals need to call and be screened before they can advise if a bed is available).  
**Contact Info:** 610 South Thompson St., Carbondale, IL 62901 ..... (618) 549-4807  
**24-HOUR HOTLINE** ..... (800) 334-2094  
**Website:** <https://www.empoweringsurvivors.org/>

**\*The Night’s Sheld**

**Services:** Providing **survivors of domestic and sexual violence (and their children)** with safe shelter, transportation, child care, parental services, employment assistance, economic assistance, education assistance, life skills, transitional housing, referrals, counseling, substance abuse services crisis intervention, conflict resolution, legal and medical advocacy, case management and more. **\*(Individual needs to call and be screened before they can advise if a bed is available.)**  
**Contact Info:** Children’s Shelter - 301 E. Garland St., West Frankfort, IL 62896 ..... (618) 932-6400  
**Website:** <https://www.thenightsshield.org/>

**\*Violence Prevention Center**

**Services:** Providing temporary shelter for domestic violence survivors and their dependent children who are fleeing abusive relationships. While staying at the emergency shelter, staff provide case management, counseling, support groups, legal advocacy and medical services.  
**Contact Info:** P.O. Box 831, Belleville, IL 62222 ..... Crisis Line (618) 235-0895

**HOSPICE**

**Maple Creek Hospice**

*(Medicare, Medicaid and all insurance)*  
**Services:** Providing the necessary support for our patients’ physical, spiritual, and emotional well-being.  
**Contact Info:** 706 South St. Louis St., Sparta, IL 62286 .....Available 24 hours/day (618) 443-4671  
**Website:** <http://maplecreekhospice.com/>

**\*Family Hospice of Belleville Area**

**Services:** Non-profit healthcare organization that helps guide patients and families through their journey, providing professional care, medications, equipment, supplies, and other support services. Serving Monroe, Randolph, St. Clair, Madison, and Clinton counties in Illinois.  
**Contact Info:** 5110 West Main, Belleville, IL 62226 ..... (618) 277-1800  
**Website:** <https://familyhospice.org/>

\* Located outside of Randolph County but available to Randolph County residents  
 \*\* Online & National Hotline numbers

**\*Hospice of Southern Illinois, Inc.**

*(Medicare, Medicaid, private insurance)*

**Services:** Provide specialized healthcare services for patients and families faced with a life-limiting illness. Our focus is on patient care including symptom management, emotional support, and spiritual support.

**Contact Info:** 305 South Illinois St., Belleville, IL 62220 ..... (800) 233-1708  
 204 Halfway Rd., Marion, IL 62959..... (800) 233-1708

**Website:** <https://hospice.org/>

**\*Vitas Hospice Care**

**Services:** VITAS hospice team members visit you wherever you call home throughout Southwestern Illinois. Caring for patients with an interdisciplinary team comprised of nurses, physicians, aides, social workers, chaplain, and other clinical professionals to meet the emotional and spiritual needs of the patient and their family.

**Contact Info:** 16 Executive Drive, Suite 100, Fairview Heights, IL 62208 ..... (844) 231-9028

**Website:** <https://www.vitas.com/locations-search/fairview-heights>

**HOSPITALS**

**Memorial Hospital of Chester**

**Contact Info:** 1900 State St., Chester, IL 62233 ..... (618) 826-4581

**Website:** <https://www.mhchester.com/>

**Red Bud Regional Hospital**

**Contact Info:** 325 Spring St., Red Bud, IL 62278..... (618) 282-3831

**Website:** <https://www.redbudregional.com/>

**Sparta Community Hospital**

**Contact Info:** 818 East Broadway St., Sparta, IL 62286 ..... (618) 443-2177

**Website:** <https://www.spartahospital.com/>

**HOUSING**

**COUNSELING, HOUSING PROGRAMS & RENT ASSISTANCE**

**Habitat for Humanity**

**Services:** Help families build and improve places to call home.

**Contact Info:** 301 West Broadway St., Sparta, IL 62286 ..... (618) 443-3824

**Western Egyptian Economic Opportunity Council, Inc.**

*See additional information under Anchor Agencies.*

**MENTAL ILLNESS**

**ComWell - Melmar (Sparta)**

*See ComWell under Anchor Agencies.*

**PUBLIC HOUSING**

**Randolph County Housing Authority**

**Services:** Participates in Section 8 Housing Choice Voucher (HCF) and public housing programs.

**Contact Info:** 916 George St, Chester, IL 62233 ..... (618) 826-4314

807 North Gardner St., Sparta, IL 62286..... (618) 443-3393

\* Located outside of Randolph County but available to Randolph County residents

\*\* Online & National Hotline numbers

**SENIORS/DISABLED**

**MACO Management Co., Inc.**

**Services:** Housing for individuals aged 62 years or older or who are disabled regardless of age and have low to moderate income.

**Contact Info:** Main Office, 1008 E. Main St., Robinson, IL 62454 ..... (618) 544-8645  
 Chesterton Manor Apartments, 1420 Court St., Chester, IL 62233..... (618) 826-2802  
 Red Bud Apartments, 225 Lockwood Dr., Red Bud, IL 62278 ..... (618) 282-2778  
 Red Bud Estates, 575 Country Club Rd., Red Bud, IL 62278 ..... (618) 282-4351  
 710 West Market St., Red Bud, IL 62278 ..... (618) 282-4351  
 Steeleville Apartments, 807 Lockwood Ct., Steeleville, IL 62288..... (618) 965-3676

**SPECIAL NEEDS FOR INTELLECTUAL DISABILITY**

**ComWell – Community Integrated Living Arrangement (CILA) (Chester)**

*See ComWell under Anchor Agencies.*

**Progressive Careers and Housing (CILA) Sparta Terrace**

**Services:** 16 bed intermediate care center for adults with intellectual disabilities.

**Contact Info:** 1501 Melmar Dr., Sparta, IL 62286 .....(618) 443-2122

**Website:** <https://www.phidd.org/>

**HUMAN TRAFFICKING**

**\*Healing Action Network, Inc.**

**Services:** Supporting survivors of sex trafficking and sexual exploitation in the St. Louis region.

**Contact Info:** P.O. Box 39429, St. Louis, MO 63139 ..... (314) 833-4515

**Website:** <https://healingaction.org/>

**\*Restoration 61**

**Services:** All services are free and include crisis intervention, one-on-one advocacy, and case management clinical services, weekly groups and outreach.

**Contact Info:** 1001 N. Main, Harrisburg, IL 62946 ..... (618) 841-6427

Intake Line..... (773) 550-7239

**Website:** <https://www.restoration61.org>

**\*\*National Human Trafficking Hotline**

**Contact Info:** ..... (888) 373-7888

**Website:** <https://humantraffickinghotline.org/en>

**INTERNET ASSISTANCE**

**\*\*Lifeline HUD Resource**

**Services:** Makes communication services more affordable for low-income consumers by lowering the cost of phone or internet bills for HUD Residents.

**Contact info:** ..... (800) 234-9473

**Website:** [https://getinternet.gov/apply?id=nv\\_home&ln=RW5nbGlzaA%3D%3D](https://getinternet.gov/apply?id=nv_home&ln=RW5nbGlzaA%3D%3D)

**LEGAL SERVICES**

**\*Equip for Equality, Inc.**

**Services:** Legal representation and advocacy for persons with developmental, mental and physical disabilities, outreach, and training, information and referral.

**Contact Info:** 300 East Main St. Suite 18, Carbondale, IL 62901 ..... (618) 457-7930

**Website:** <https://www.equipforequality.org/>

\* Located outside of Randolph County but available to Randolph County residents

\*\* Online & National Hotline numbers

**\*Land of Lincoln, Legal Aid**

**Services:** Providing free legal aid to families and individuals in need. Areas of law include: consumer law, family law, education law, elder law and disability rights, health and economic security, and housing law. Areas of law not covered include criminal cases (including traffic cases), personal injury, malpractice, or workers' compensation cases.

**Contact Info:** First Mid Illinois Bank Building, Third Floor, 509 South University Ave., Carbondale IL 62901 ..... (618) 457-7800

**Website:** <https://lincolnlegal.org/>

**\*SIU Carbondale Legal Clinic**

**Services:** Serving residents in southern Illinois. Our legal clinics offer students the opportunity to work with clinical faculty while representing clients through civil practice/elderly and juvenile justice clinics.

**Contact Info:** 115 Douglas Dr., Carbondale, IL 62901 ..... (618) 536-7711

**Website:** <https://law.siu.edu/academics/clinics/>

**\*Veterans Legal Assistance Program (VLAP) (SIU)**

**Services:** Providing legal assistance to veterans in southern Illinois who cannot afford or do not have access to legal representation in the appeals of claims for compensation of service connected disabilities, pension, survivor benefits, and education benefits.

**Contact Info:** ..... (855) 452-3526

**LGBTQIA+ RESOURCES**

**\*Metro East PRIDE**

**Services:** Advancing unity, visibility and wellness among persons with diverse sexual and gender identities through cultural and education programs, sharing of information and resources, and social activities in the Metro East area, including the annual Metro East Pride Fest – celebrating the present, envisioning the future and honoring the past.

**Contact Info:** PO Box 794, Belleville, IL 62222

**Email:** [metroeastpride@gmail.com](mailto:metroeastpride@gmail.com)

**Website:** <https://www.metroeastpride.org/>

**\*PFLAG**

**Services:** Creating a caring, just, and affirming world for LGBTQ+ people and those who love them. Through our core values of meeting people where they are and collaborating with others, PFLAG seeks to realize our vision through support, education and advocacy.

**Contact Info:** Greater St. Louis Area ..... (314) 328-9432

**Website:** <https://www.pflagstl.org/>

**\*Queer-Oriented Rural Resource Network (QORRN)**

**Services:** QORRN is a community project dedicated to helping LGBTQ+ individuals in rural communities access the resources they need. Also offering trainings for community groups.

**Website:** <https://www.qornn.com/>

**\*Rainbow Café LGBTQ Center**

**Services:** Provides non-judgmental support and access to personal, community, spiritual, and health resources to LGBTQIA+ people in Southern Illinois. Rainbow Café is a welcoming, affirming environment for LGBTQIA+ people and their friends and families.

**Contact Info:** 118 N. Illinois Ave., Carbondale, IL 62901 ..... (618) 525-9922

**Website:** <https://www.rainbowcafe.org/>

**\*\*The Trevor Project**

**Services:** Provides 24/7 crisis intervention and suicide prevention for LGBTQ youth.

**Contact Info:** To reach a counselor 24/7, go to: <https://www.thetrevorproject.org/contact-us/>

**Website:** <https://www.thetrevorproject.org/>

\* Located outside of Randolph County but available to Randolph County residents

\*\* Online & National Hotline numbers

## LIBRARIES

### Chester Public Library

**Services:** Regular library services, e-library, and FREE Wi-Fi internet access.

**Contact Info:** 733 State St., Chester, IL 62233 ..... (618) 826-3711

**Hours:** Monday – Thursday 10:00 am-6:00 pm and Friday - Saturday 9:00 am-1:00 pm

**Website:** <https://www.chesterpubliclibrary.com/>

### Coulterville Public Library

**Services:** Regular library services, free computer and Wi-Fi use, fax, and copying services.

**Contact Info:** 103 South 4th St., Coulterville, IL 62237 ..... (618) 758-3013

**Hours:** Monday and Friday 10:00 am-3:00 pm, Tuesday and Thursday 1:00 pm-6:00 pm  
and Saturday 10:00 am-2:00 pm, CLOSED Wednesday and Sunday

**Website:** <http://www.coultervillelibrary.weebly.com>

### Evansville Public Library

**Services:** Regular library services, free computer and Wi-Fi use, copying services, check out movies, e-books, Lego club, and much more.

**Contact Info:** 602 Public St., Evansville, IL 62242 ..... (618) 853-4649

**Hours:** Tuesdays 11:00 am-5:00 pm and Fridays 10:00 am-12:00 pm

**Website:** <https://evansvillepubliclibrary.weebly.com/>

### Marissa Public Library

**Services:** Regular library services in addition to Coffee and Conversation, book clubs, painting class, Pinterest club, and virtual story time.

**Contact Info:** 212 North Main St., Marissa, IL 62257 ..... (618) 295-2825

**Hours:** Monday, Tuesday, Wednesday and Friday 10:00 am-5:00 pm, Thursday 10:00 am-7:00 pm  
CLOSED Saturday and Sunday

**Website:** <https://www.marissalibrary.org/>

### Prairie du Rocher Community Library

**Services:** Regular library services and internet.

**Contact Info:** 223 Market St., Prairie du Rocher, IL 62277 ..... (618) 284-7323

**Hours:** Tuesday 5:00 pm-7:00 pm, Wednesday 2:00 pm-4:00 pm, Thursday & Saturday 10:00 am-12:00 pm

### Red Bud Public Library

**Services:** Regular library services, free computer and Wi-Fi use, copying services, children and family programs, summer reading programs, access to newspapers and magazines, book clubs, puzzle exchange, use of backroom, and more.

**Contact Info:** 925 South Main St., Red Bud, IL 62278 ..... (618) 282-2255

**Hours:** Monday-Thursday 12:00 pm-7:00 pm, Friday and Saturday 9:00 am-1:00 pm

**Website:** <https://redbudpubliclibrary.weebly.com/>

### Sparta Public Library

**Services:** Regular library services, story time and Kidz Club Zone, e-books, homework help, children's programs, kid's corner, young adult programs, Project Next Generation, youth resources, adult programs, and more.

**Contact Info:** 211 West Broadway St., Sparta, IL 62286 ..... (618) 443-5014

**Hours:** Monday, Tuesday and Thursday 12:00 pm-7:00 pm, Wednesday and Friday 10:00 a.m-5:00 pm,  
and Saturday 10:00 am-4:00 pm

**Website:** <https://www.spartapubliclibrary.com/>

\* Located outside of Randolph County but available to Randolph County residents

\*\* Online & National Hotline numbers

**Steeleville Area Public Library**

**Services:** Regular library services, e-books, summer reading program, story hour, games, and monthly calendar with special events such as Lego club, craft club, book club, and more.  
**Contact Info:** 625 South Sparta, St., Steeleville, IL 62288..... (618) 965-9732  
**Hours:** Monday-Friday 10:00 am-6:00 pm and Saturday 10:00 am-1:00 pm  
**Website:** <https://www.steelevillelibrary.org/>

**Tilden Public Library**

**Services:** Regular library services.  
**Contact Info:** 381 Butler St., Tilden, IL 62292 ..... (618) 587-1282  
**Hours:** Monday and Thursday 2:00 pm-6:00 pm; Tuesday and Saturday 10:00 am-2:00 pm  
 CLOSED Sunday, Wednesday and Friday  
**Website:** <https://www.sites.google.com/view/tildenlibrary>

**LONG-TERM CARE & ASSISTED LIVING**

**Addington Place of Sparta**

**Contact Info:** 211 North Market St., Sparta, IL 62286..... (618) 443-2600  
**Website:** <https://addingtonplaceofsparta.seniorlivingnearme.com/>

**Coulterville Rehabilitation and Health Care Center**

**Contact Info:** 13138 State Route 13, Coulterville, IL 62237..... (618) 758-2256  
**Website:** <https://coultervillebytutera.com/>

**Garden Place Senior Living**

**Contact Info:** 351 Lockwood Dr., Red Bud, IL 62278 ..... (618) 753-4590  
**Website:** <https://www.compass-living.com/senior-living/il/red-bud/garden-place-red-bud/>

**High Point Residence**

**Contact Info:** 3030 State St., Chester, IL 62233 ..... (618) 826-1400  
**Website:** <https://highpointchester.com/>

**Randolph County Care Center**

**Contact Info:** 312 West Belmont St., Sparta, IL 62286 ..... (618) 443-4351  
**Website:** <https://randolphcountyil.gov/carecenter/>

**Three Springs Senior Living & Rehabilitation**

**Contact Info:** 161 Three Springs Rd., Chester, IL 62233..... (618) 826-3210  
**Website:** <https://wlcfirm.com/three-springs-senior-living-and-rehabilitation.php>

**MEDICAL**

**AFTERCARE & THERAPY PROGRAMS**

**Memorial Hospital Therapy & Sports Rehab Center**

**Services:** After graduating from therapy, patients may opt to continue using the facility to continue their exercises on an independent basis.  
**Contact Info:** 833 Lehmen Dr., Chester, IL 62233 ..... (618) 826-4588  
**Website:** <https://www.mhchester.com/rehab-center>

\* Located outside of Randolph County but available to Randolph County residents  
 \*\* Online & National Hotline numbers

**Red Bud Regional Hospital**

**Services:** Outpatient physical, occupational and speech therapy offers services for injury or illness.

Inpatient rehabilitation services – see “Skilled Care”

**Contact Info:** 325 Spring St., Red Bud, IL 62278 ..... (618) 282-5172

**Hours:** Vary

**Website:** <https://redbudregional.com/>

**The Center, After Care – Physical & Sports Therapy (Sparta Community Hospital)**

**Services:** Available for all outpatients, after completing their treatment plan, to continue on an independent basis with a full line of state-of-the-art equipment.

**Contact Info:** 1300 North Market, Sparta, IL 62286 ..... (618) 443-6966

**Website:** <https://www.spartahospital.com/locations/physical-therapy/>

**BREAST HEALTH**

**Red Bud Regional Hospital**

**Services:** Offering 3D mammography for all women, especially those with young and/or dense breasts, BRCA mutation, family history of breast cancer, prior breast biopsy, and/or radiation to the chest.

**Contact Info:** 325 Spring St., Red Bud, IL 62278 ..... (618) 282-4900

**Website:** <https://redbudregional.com/>

**CARDIOLOGY**

**Cardiac Pulmonary Rehab Center (Memorial Hospital of Chester)**

**Services:** After an event or diagnosis, your provider can refer you, with an order, to the CPRC. An assessment is completed, and an individualized treatment plan is created. Rehabilitation programs at the center provide comprehensive care to patients with heart and lung conditions. Through the program, individuals are given a structured program that includes education, counseling, and exercise to strengthen their lungs and heart. Participants in the program have access to various tools and a full support system to help them recover. The CPRC provides training on physical activity, medications, healthy living, stress management, and smoking cessation.

**Contact Info:** 1900 State St., Chester, IL 62233 ..... (618) 826-4581 ext. 1151

**Website:** <https://www.mhchester.com/cprehab>

**Cardiopulmonary Rehabilitation (Sparta Community Hospital)**

**Services:** A medically supervised program for people with heart or lung conditions. Personalized plans help improve strength, endurance, and confidence through guided exercise, nutrition counseling, health education, breathing techniques, emotional and lifestyle support.

**Contact Info:** 205 South Burns Avenue, Sparta, IL 62286 ..... (618)-443-2177, ext. 2185

**Website:** <https://www.spartahospital.com/services/cardiopulmonary-rehabilitation/>

**Red Bud Regional Hospital**

**Services:** Include EKGs, stress testing, vascular ultrasound, nuclear cardiology, holter monitoring, Echocardiograms and clinic consultations.

**Contact Info:** 325 Spring St., Red Bud, IL 62278 ..... (618) 282-5402

**Website:** <https://redbudregional.com/>

**Sparta Cardiology Office (Sparta Community Hospital)**

**Services:** We partner with a variety of visiting cardiologists to provide patient consultants, ongoing care and follow-up visits on select days at Sparta Cardiology Office. Visiting specialists hold a variety of degrees and certification, and are independent contracted providers, and are not employees or agents of Sparta Community Hospital District.

**Contact Info:** 205 South Burns Ave., Sparta, IL 62286 ..... (618) 443-IDOC (1362)

**Hours:** Vary

**Website:** <https://www.spartahospital.com/locations/sparta-cardiology-office/>

\* Located outside of Randolph County but available to Randolph County residents

\*\* Online & National Hotline numbers

**CARE MANAGEMENT PROGRAM**

**Care Management Program (Sparta Community Hospital)**

**Services:** Enables the patient’s primary care clinician to provide them with better access to comprehensive, coordinated, continuous, and proactive evidence based care.

**Contact Info:** 818 E. Broadway, Sparta, IL 62286 ..... (618) 443-2177

**Website:** <https://www.spartahospital.com/services/care-management-program/>

**CLINICS, PHYSICIAN’S OFFICES & WELLNESS CARE**

**Chester Clinic (Memorial Hospital of Chester)**

**Services:** Family health care for newborns through geriatrics, same day appointments, wellness visits, family planning, school and sports physicals, nursing home care, minor in-office procedures, allergy and injection therapy, laboratory, immunizations (Vaccines For Children – VFC provider), DOT physical exams.

**Contact Info:** Medical Office Building, 1900 State St., Chester, IL 62233 ..... (618) 826-2388

**Hours:** Monday and Friday 8:00 am-5:00 pm  
 Tuesday, Wednesday, and Thursday Extended Hours Starting at 7:00 am  
 (with a Nurse Practitioner or Physician Assistant)

**Website:** <https://www.mhchester.com/clinics>

**Coulterville Medical Clinic (Sparta Community Hospital)**

**Services:** Primary care and family medicine providing healthcare services to patients of all ages; treat minor urgent conditions such as injuries, infections, flu and sprains; and also manage chronic conditions such as diabetes and high blood pressure in addition to delivering preventative care and wellness guidance.

**Contact Info:** 203 East Grant St., Coulterville, IL 62237 ..... (618) 758-2331

**Hours:** Monday 8:30 am-5:00 pm  
 Tuesday-Friday 8:00 am-5:00 pm

**Website:** <https://www.spartahospital.com/locations/>

**Family Health Centre (Sparta Community Hospital)**

**Services:** Primary care and family medicine providing healthcare services to patients of all ages; treat minor urgent conditions such as injuries, infections, flu and sprains; manage chronic conditions such as diabetes and high blood pressure in addition to delivering preventative care and wellness guidance. Pediatrician.

**Contact Info:** 207 S. Burns Ave., Sparta, IL 62286 ..... (618) 443-3084

**Hours:** Monday-Thursday 7:30 am-5:30 pm; Friday 8:30 am-5:30 pm

**Website:** <https://www.spartahospital.com/locations/family-health-centre/>

**North Campus Healthcare Specialty Clinic (Sparta Community Hospital)**

**Services:** We partner with a variety of visiting specialists to provide patient consultants, ongoing care and follow-up visits on select days not only at North Campus Healthcare, but also at Broadway Plaza and Sparta Cardiology Office. Specializing in treating a broad range of health issues, our visiting specialists hold a variety of degrees and certification, and are independent contracted providers, and are not employees or agents of Sparta Community Hospital District.

**Contact Info:** 1300 North Market St., Sparta, IL 62286 ..... (618) 443-4138

**Hours:** Monday 8:30 am-5:00 pm

**Website:** <https://www.spartahospital.com/locations/north-campus-healthcare-2/north-campus-healthcare-2/>

**Red Bud Health Clinic (Red Bud Regional Hospital)**

**Services:** Family medicine, adult medicine, gastroenterology, general surgery, wound care and more.

**Contact Info:** RBRH Second Floor, 325 Spring St., Red Bud, IL 62278 ..... (618) 282-7373

**Hours:** Monday-Friday 8:00 am-5:00 pm

**Website:** <https://redbudregional.com/red-bud-health-clinic/>

\* Located outside of Randolph County but available to Randolph County residents

\*\* Online & National Hotline numbers

**SIHF Healthcare**

**Contact Info:** 824 Locust, Red Bud, IL 62278 ..... (618) 282-6656  
**Hours:** Monday, Tuesday, Thursday and Friday 8:30 am-5:00 pm, Wednesday 8:30 am-3:00 pm  
**Website:** <https://www.sihf.org/health-center/red-bud>

**Sparta Medical Office (Sparta Community Hospital)**

**Services:** Primary care and family medicine providing healthcare services to patients of all ages; treat minor urgent conditions such as injuries, infections, flu and sprains; and also manage chronic conditions such as diabetes and high blood pressure in addition to delivering preventative care and wellness guidance.  
**Contact Info:** 215 South Burns Ave., Sparta, IL 62286 ..... (618) 443-2297  
**Hours:** Monday 8:30 am-7:00 pm; Tuesday-Friday 8:30 am-5:00 pm  
**Website:** <https://www.spartahospital.com/locations/sparta-medical-office/>

**Steeleville Clinic (Sparta Community Hospital)**

**Services:** Primary care and family medicine providing healthcare services to patients of all ages; treat minor urgent conditions such as injuries, infections, flu and sprains; and also manage chronic conditions such as diabetes and high blood pressure in addition to delivering preventative care and wellness guidance.  
**Contact Info:** #9 Westwood Dr., Steeleville, IL 62288 ..... (618) 965-3466  
**Hours:** Monday and Thursday 8:30 am-7:00 pm; Tuesday, Wednesday and Friday 8:30 am-5:00 pm  
**Website:** <https://www.spartahospital.com/locations/steeleville-clinic/>

**Steeleville Family Practice (Memorial Hospital of Chester)**

**Services:** Family health care for newborns through geriatrics, same day appointments, wellness visits, family planning, school and sports physicals, nursing home care, minor in-office procedures, allergy and injection therapy, laboratory, immunizations, and DOT physical exams.  
**Contact Info:** 602 West Shawneetown Trail, Steeleville, IL 62288 ..... (618) 965-3382  
**Hours:** Monday-Friday 8:00 am-12:00 pm, 1:00 pm-5:00 pm  
**Website:** <https://www.mhchester.com/clinics>

**\*Shawnee Health Services - Migrant/Farmworker Health Center**

**Services:** Include medical, dental, OB/GYN, nutrition, counseling, social services, lab testing, and pharmacy provided to migrant/seasonal workers at reduced fees or arranged plan; Medicare and Medicaid accepted; bilingual.  
**Contact Info:** #7 South Hospital Dr., Murphysboro, IL 62966 ... (618) 519-9200 opción nueve para español  
**Website:** <https://www.shawneehealth.com/services/farmworker-health-program/>

**CONVENIENT CARE**

**Convenient Care, Walk-In Clinic (Memorial Hospital of Chester)**

**Contact Info:** Medical Office Building, 1900 State St., Chester, IL 62233 ..... (618) 826-4581  
**Hours:** Monday-Friday 8:00 am-11:30 am, 12:00 pm-5:00 pm,  
 Saturday 8:00 am-11:30 am, 12:00 pm-1:00 pm  
**Website:** <https://www.mhchester.com/convenient-care>

**Convenient Care (Sparta Community Hospital)**

**Contact Info:** 1300 North Market, Sparta, IL 62286 ..... (618) 443-2177  
**Hours:** Monday-Friday 9:00 am-7:00 pm, Saturday 9:00 am-4:00 pm, Sunday 9:00 am-2:00 pm  
**Website:** <https://www.spartahospital.com/services/convenient-care/>

**Walk-In Clinic Red Bud Health Clinic (Red Bud Regional Hospital)**

**Contact Info:** 2nd Floor, Red Bud Regional Hospital, 325 Spring St., Red Bud, IL 62278.... (618) 282-7373  
**Hours:** Monday-Friday 8:00 am-7:00 pm, Saturday 8:00 am-4:00 pm CLOSED Sunday  
**Website:** <https://redbudregional.com/red-bud-walk-in-clinic/>

\* Located outside of Randolph County but available to Randolph County residents  
 \*\* Online & National Hotline numbers

**COUMADIN MANAGEMENT**

**Coumadin Clinic (Sparta Community Hospital)**

**Services:** A clinic pharmacist, working with your physician, will monitor and manage medication that prevents blood clots, provide individualized care and education, and make any necessary medication adjustments. Please contact your doctor’s office to obtain a referral.

**Contact Info:** 818 East Broadway St., Sparta, IL 62286 ..... (618) 443-2177

**Hours:** Tuesday 9:00 am-12:00 pm

**Website:** <https://www.spartahospital.com/services/coumadin-clinic/>

**DIALYSIS SERVICES**

**DaVita Dialysis**

**Contact Info:** 1500 East Market St., Lot 4, Red Bud, IL 62278..... (833) 384-2720

**Website:** <https://www.davita.com/>

**Fresenius Kidney Care**

**Contact Info:** 102 Memorial Dr., Chester, IL 62233 ..... (800) 881-5101

**Website:** <https://www.freseniuskidneycare.com/dialysis-centers/illinois/1885>

**MOBILE HEALTHCARE**

**Mobile Health Clinics (Sparta Community Hospital)**

**Services:** Scheduled and walk-in primary care and family medicine providing healthcare services to patients of all ages. Treat minor urgent conditions such as injuries, infections, flu and sprains. Also, manage chronic conditions such as diabetes and high blood pressure and deliver preventative care and wellness guidance.

**Contact Info:** .....(618) 443-IDOC (1362)

**Hours:** Please visit website for current schedule.

**Website:** <https://www.spartahospital.com/services/mobile-health-clinic/>

**RESPIRATORY/PULMONARY**

**Cardiac Pulmonary Rehab Center (Memorial Hospital of Chester)**

**Services:** After an event or diagnosis, your provider can refer you, with an order, to the CPRC. An assessment is completed and an individualized treatment plan is created. Rehabilitation programs at the center provide comprehensive care to patients with heart and lung conditions. Through the program, individuals are given a structured program that includes education, counseling, and exercise to strengthen their lungs and heart. Participants in the program have access to various tools and a full support system to help them recover. The CPRC provides training on physical activity, medications, healthy living, stress management, and smoking cessation.

**Contact Info:** 1900 State St., Chester, IL 62233 ..... (618) 826-4581 ext. 1151

**Website:** <https://www.mhchester.com/cprehab>

**Cardiopulmonary Rehabilitation (Sparta Community Hospital)**

**Services:** A medically supervised program for people with heart or lung conditions. Personalized plans help improve strength, endurance, and confidence through guided exercise, nutrition counseling, health education, breathing techniques, emotional and lifestyle support.

**Contact Info:** 205 South Burns Ave., Sparta, IL 62286 ..... (618) 443-2177 ext. 2185

**Website:** <https://www.spartahospital.com/services/cardiopulmonary-rehabilitation/>

**Lung Screening Program (Memorial Hospital of Chester)**

**Services:** The Lung Cancer Screening Program is covered by most private insurance plans, Medicare and Medicaid. Patients must have a shared decision-making visit with a medical provider prior to their lung cancer screening test. Check with your provider or call our Nurse Navigator at the phone number below for assistance.

**Contact Info:** 1900 State St., Chester, IL 62233 ..... 855-399-LUNG (5864)

**Website:** <https://www.mhchester.com/lung-screening>

\* Located outside of Randolph County but available to Randolph County residents

\*\* Online & National Hotline numbers

**\*Black Lung Program (A program of Shawnee Health Service)**

**Services:** Specialized in assisting former coal miners and/or widows of coal miners with their black lung benefits claims, medical diagnosis and treatment of black lung disease. Services are free.  
**Contact Info:** 109 California St., Carterville, IL 62918.....(618) 519-9200  
**Hours:** Monday-Friday 8:00 am-4:00 pm  
**Outreach Areas:** Carbondale, Carterville, Marion and Murphysboro  
**Website:** <https://www.shawneehealth.com/services/black-lung-program/>

**SKILLED CARE**

**Swing Bed Program (Memorial Hospital of Chester)**

**Services:** 24-hour skilled nursing care, physician services, physical therapy, speech/language therapy, occupational therapy, certified nurse assistants, licensed social worker, post-surgical care, IV therapies, diabetic management, enteral feedings, pain management, pharmacy services, and wound management.  
**Contact Info:** Memorial Hospital, 1900 State St., Chester, IL 62233 ..... (618) 826-4581  
**Website:** <https://www.mhchester.com/swing-bed-program>

**Swing Bed Program (Red Bud Regional Hospital)**

**Services:** Short-term rehabilitation program designed to support recovery after an illness or surgery, such as prolonged weakness, heart attack, stroke, or surgical procedures.  
**Contact Info:** 325 Spring St, Red Bud IL 62278..... (618) 282-5457  
**Website:** <https://redbudregional.com/swing-bed-program/>

**Swing Bed Program (Sparta Community Hospital)**

**Services:** 24/7 acute care nurses with in-house physicians and respiratory therapist, physical, occupational and speech therapy with individual plan of care.  
**Contact Info:** 818 East Broadway St., Sparta, IL 62286 ..... (618) 443-2177 ext.1409  
**Website:** <https://www.spartahospital.com/services/swing-bed-program/>

**SLEEP LAB**

**Memorial Hospital of Chester**

**Services:** Provide sleep diagnostic testing and treatment of sleep disorders and home sleep studies.  
**Contact Info:** 1900 State St., Chester, IL 62233 ..... (618) 826-4581  
**Website:** <https://www.mhchester.com/sleep-disorder-treatment-sleep-lab>

**Sparta Community Hospital**

**Services:** Provide overnight exams to monitor sleep and identify disruptions to sleep patterns such as sleep apnea, hyperpnoea, excessive snoring, insomnia, narcolepsy, and heart rhythm problems.  
**Contact Info:** 818 E. Broadway St., Sparta, IL 62286 ..... (618) 443-2177  
**Website:** <https://www.spartahospital.com/services/sleep-studies/>

**SPECIALTY CLINIC**

**Broadway Plaza Care Specialty Clinic (Sparta Community Hospital)**

**Services:** Visiting specialty providers include oncology, ENT and women’s healthcare provide patient consultants, ongoing care and follow-up visits on select days at Broadway Plaza. Specializing in treating a broad range of health issues, our visiting specialists hold a variety of degrees and certification, and are independent contracted providers, and are not employees or agents of Sparta Community Hospital District.  
**Contact Info:** 203 S. Vine Street, Suite 1, Sparta, IL 62286  
**Hours:** Vary  
**Website:** <https://www.spartahospital.com/locations/broadway-plaza/specialty-clinics-at-broadway-plaza/>

**Deaconess Illinois Specialty Clinic (Red Bud Regional Hospital)**

**Services:** Specialty providers including cardiology, orthopedics, nephrology, podiatry, and dermatology.  
**Contact Info:** 350 W. S. 1<sup>st</sup> Street, Red Bud, IL 62278 (on Hospital Campus) ..... (618) 282-5402  
**Hours:** Provider schedules may vary. Monday-Friday 8:00 am-5:00 pm.  
**Website:** <https://redbudregional.com/services/>

\* Located outside of Randolph County but available to Randolph County residents

\*\* Online & National Hotline numbers

**Memorial Hospital Specialty Clinic (Memorial Hospital)**

**Services:** Specialty providers including audiology, cardiology, nephrology, oncology and hematology, orthopedics, otolaryngology (ENT), pain management, podiatry, urology, and wound clinic.  
**Contact Info:** Memorial Hospital, 1900 State St., Chester, IL 62233 ..... (618) 826-4581 (1366)  
**Hours:** Providers’ schedules may vary. Monday-Friday 8:00 am-5:00 pm.  
**Website:** <https://www.mhchester.com/providers>

**North Campus Healthcare Specialty Clinic (Sparta Community Hospital)**

**Services:** Visiting specialty providers include gastroenterology, orthopedics, rheumatology, pain management, podiatry, pulmonology, urology, neurology, general surgery, nephrology, and virtual endocrinology provide patient consultants, ongoing care and follow-up visits on select days at North Campus Healthcare. Specializing in treating a broad range of health issues, our visiting specialists hold a variety of degrees and certification, and are independent contracted providers, and are not employees or agents of Sparta Community Hospital District.  
**Contact Info:** 1300 North Market St., Sparta, IL 62286..... (618) 443-4138  
**Hours:** Monday 8:30 am-5:00 pm  
**Website:** <https://www.spartahospital.com/locations/north-campus-healthcare-2/north-campus-healthcare-2/>

**Red Bud Health Clinic (Red Bud Regional Hospital)**

**Services:** Specialty providers including gastroenterology, general surgery, and wound care.  
**Contact Info:** 325 Spring St., Red Bud, IL 62278 ..... (618) 282-7373  
**Website:** <https://redbudregional.com/>

**MEDICAL INSURANCE**

**\*\*Affordable Care Act**

**Website:** <https://getcovered.illinois.gov/>

**\*\*Healthcare for Kids**

**All Kids Hotline** ..... (866) ALL-KIDS or (866) 255-5437  
 ..... TTY: (877) 204-1012  
**Website:** <https://hfs.illinois.gov/medicalprograms/allkids.html>

**\*\*Illinois Department of Insurance, Office of Consumer Health Insurance**

**Services:** File a complaint if you are having a problem with your state-regulated health plan.  
**Contact Info:** ..... (866) 445-5364  
**Website:** <https://idoi.illinois.gov/>

**\*\*Medicaid**

**Services:** Federal and state programs that help with medical costs for people with limited income.  
**Contact Info:** ..... (800) 843-6154  
**Website:** <https://abe.illinois.gov/abe/access/>  
<https://www.illinois.gov/hfs/MedicalClients/Pages/AbeBenefits.aspx>

**\*\*Medicare**

**Services:** Federal program that provides health coverage for people over 65 or under 65 with a disability.  
**Contact Info:** ..... (800) MEDICARE  
**Website:** <https://www.medicare.gov/>

**MENTAL HEALTH**

**ComWell**

*See information under Anchor Agencies.*

\* Located outside of Randolph County but available to Randolph County residents

\*\* Online & National Hotline numbers

**\*Behavioral Health Crisis Center**

**Services:** The Behavioral Health Crisis Center is a partnership between Gibson Center for Behavioral Change and the Community Counseling Center. The BHCC provides a 24/7 no-wrong-door approach for those experiencing a behavioral health crisis.

- Crisis stabilization
- 24/7 access
- Walk-ins accepted
- Psychiatric care and assessment
- Medication-assisted treatment
- Brief supportive counseling
- Peer support services
- Referral and linkage to community resources
- ZERO COST MENTAL HEALTHCARE

**Contact Info:** 1112 Linden St., Cape Girardeau, MO 63703 ..... (573) 803-4155

**Website:** <https://semo-bhcc.com/>

**\*Centerstone**

*See information under Anchor Agencies.*

**\*Chestnut Health Services**

**Services:** Include mental health care, substance use treatment, crisis intervention, case management and support services, and integrated care.

**Contact Info:** 12 North 64th St., Belleville, IL 62223 ..... (888) 924-3786

**Website:** <https://chestnut.org/mental-health-and-substance-use-treatment>

**\*Christian Hospital Recovery Center**

*(Private insurance and Medicare)*

**Services:** Diagnosis and treatment for alcoholism, anxiety disorders, bipolar disorders, depression, drug abuse, and Schizophrenia.

**Contact Info:** 11125 Dunn Rd., Medical Office Bldg. 2, Suite 401, St. Louis, MO 63136 ..... (314) 953-8100

**Website:** <https://rehab.org/christian-hospital-recovery-center/>

**\*Comprehensive Behavioral Health Center**

*(Discounts available based on family size and income)*

**Services:** Provide quality individualized essential services for people in need of emotional, rehabilitation, and social support, on a 24-hour basis, in the least restrictive environment.

- **Mental Illness:** Crisis, Living Room, Drop In Center, child & adolescents, Adult Re-Deploy, and Project for Assistance in Transition from Homelessness (PATH)
- **Substance Use:** Outpatient treatment, Methadone clinic and residential programs
- **Parenting Teens**

**Contact Info:** 505 South 8th St., East St. Louis, IL 62201 ..... (618) 482-7330

**Website:** <https://cbhc1.org/>

**\*Egyptian Behavioral Health**

**Services:** Youth and adult mental health, substance use prevention and recovery outpatient services.

**Contact Info:** 1412 US Hwy 45 N., Eldorado, IL 62930 ..... (618) 273-3326

**Website:** <https://egyptian.org/>

\* Located outside of Randolph County but available to Randolph County residents

\*\* Online & National Hotline numbers

**\*Christopher Rural Health Planning Corporation**

**Services:** Outpatient behavioral health and psychiatric services.

**Contact Info:** Eldorado Rural Health

1401 UA Hwy 45 N., Eldorado, IL 62930 ..... (618) 273-2951

Benton Mental Health Wellness Center

107 E. Smith St., Ste. B, Benton, IL 62812 ..... (618) 435-9315

CRHPC Comprehensive Behavioral Health

119 Gas Plant Rd., DuQuoin, IL 62832 ..... (618) 790-2146

**Website:** <https://www.crhpc.org/behavioral-health-cb31>

**\*Farm Family Resource Initiative**

**Services:** The Southern Illinois University School of Medicine Center for Rural Health and Social Service Development (CRHSSD) is leading the effort to build a network of support and resources for Illinois farm families. The purpose of the initiative is to provide a range of resources including a helpline to assist with farmer and farm-related issues that include mental and physical health needs. The initiative offers ongoing outreach, education, and training to rural clients to improve the health and safety of farm families.

**Contact Info:** ..... 24/7 1-833-FARM-SOS (1-833-327-6767)

**Website:** <https://www.siumed.edu/farm>

**\*Gateway Foundation**

*(Medicaid and private insurance)*

**Services:** Primarily group counseling with some individual and family counseling; residential treatment for men, women, girls and boys; men’s co-occurring program; outpatient counseling for age 12+; some transportation available for OP day group M-F; evening group available M-TH; risk education, DUI evaluations; After school OP program for youth age 12-18 M-F; MAT available; NAR NON group for families every other Monday night.

**Contact Info:** 1080 East Park St., Carbondale, IL 62901 ..... (618) 248-0838

1 Bronze Pointe North, Swansea, IL 62226 ..... (618) 226-4212

**Website:** <https://www.gatewayfoundation.org/>

**\*Hoyleton Youth & Family Services**

*(Medicaid and other insurance)*

**Counseling Care:**

- **Youth & Adult Counseling:** Specialized programs to address mental health needs with additional support through case management, crisis intervention and psychoeducation, utilizing evidence-based approaches. In-office or virtual counseling available for individuals or families along with access to Family Therapy, Art Therapy and Play Therapy rooms
- **Community-Based Counseling:** Offers flexible and accessible mental health services to individuals and families of all ages, provided in homes, public places or Hoyleton’s office, and is available to individuals eligible for Medicaid

**Pathways to Success:** Key activities are outreach, team/family facilitation, IMCANS review, crisis assessment and response, consultation and linkage. Eligibility requirements: 21 and under, Medicaid eligible, and have serious emotional disturbance or serious mental illness.

**Family Support Services:** Intensive mental health services and supports to youth with a severe emotional disturbance. Program is for youth under 18 who recently experienced a mental health crisis and could benefit from services beyond crisis care.

**Therapeutic Residential Care Programs:** Serving youth with moderate and severe developmental delays

**Contact Info:** Hoyleton Fairview Heights Campus and Puentes De Esperanza

8 Executive Dr., Ste. 200, Fairview Heights, IL 62208 ..... (618) 688-4727

Lehre Haus, 300 N. Church St., Belleville, IL 62220 ..... (618) 416-7337

Hagar House, 6015 and 6017 W. A St., Belleville, IL 62223 ..... (618) 416-7670

Hoyleton Children’s Home, 350 N. Main St., Hoyleton, IL 62803 ..... (618) 493-7382

Marion Office, 930 W. Cherry St., Marion, IL 62959 ..... (618) 315-2857

Puentes De Esperanza Chester Office, 1300 State St. Chester, IL 62233 ..... (618) 688-5052

**Website:** <https://hoyleton.org/>

\* Located outside of Randolph County but available to Randolph County residents

\*\* Online & National Hotline numbers

**\*Carita Family Solutions (fka Human Support Services)**

*(Private insurance, self-pay, Medicaid and Medicare)*

**Services:** HSS has joined forces with Caritas Family Solutions to better serve Southern Illinois’ children, families, and adults with developmental disabilities or mental health needs.

**Behavioral Health – Same Day Access:** A walk-in clinic for those seeking behavioral health services is available every Wednesday from 11 am to 3 pm A screening will be provided by a licensed mental health professional and linkage made to resources to meet individual needs. This could include follow-up appointments for behavioral health support.

**Contact Info:** 988 Illinois 3, Waterloo, IL 62298 ..... (618) 939-4444

**Website:** <https://www.hss1.org/>

**\*Lincoln Prairie Behavioral Health Center**

*(No cost assessment)*

**Services:** Standalone facility providing psychiatric treatment to children and adolescents ages three-seventeen years.

**Contact Info:** 5230 South Sixth St. Frontage Rd E., Springfield, IL 62703 ..... (217) 585-1180

**Website:** <https://lincolnprairiebhc.com/>

**\*NAMI Southwestern Illinois**

*See information under Anchor Agencies.*

**\*SIH Mulberry Center**

**Services:** 30 bed inpatient psychiatric unit, behavioral health services at Emergency Departments for a four-hospital system, outpatient psychiatric services at 5 primary care clinics in southern IL, intensive outpatient program at St. Joseph Memorial Hospital, psychiatric services at nursing home, consultation and liaison service at four hospital system and telemedicine services.

**Contact Info:** 100 Warren Tuttle Dr., Harrisburg, IL 62946 ..... (618) 253-7671

**Website:** <https://www.sih.net/services/behavioral-health>

**\*Touchette Regional Hospital Centerville**

*(Private insurance)*

**Services:** Offer outpatient and inpatient care in a warm welcoming environment combined with dedicated clinical staff and evidence-based best practices.

**Contact Info:** 5900 Bond Ave., Centerville, IL 62207 ..... (618) 332-3060

**Website:** <https://touchette.org/services/behavioral-health-and-wellness>

**\*\*Illinois Warm Line**

**Services:** A non-crisis peer support line for people living with mental illness.

**Contact Info:** ..... (866) 359-7953 or (866) 880-4459

**Hours:** Monday-Saturday 8:00 am-8:00 pm except holidays

**Website:** <https://www.illinoismentalhealthcollaborative.com/imhc/en/home/resources/warm-line>

**PHARMACIES & DRUG TAKE BACK PROGRAMS**

**PHARMACIES**

**Kell Pharmacy, Inc.**

**Contact Info:** 1375 South Main St., Red Bud, IL 62278 ..... (618) 282-2870

**Memorial Community Pharmacy**

**Contact Info:** 1900 State St., Chester, IL 62233 ..... (618) 826-6134

**Moody Health Mart Pharmacy**

**Contact Info:** 109 East Broadway St., Sparta, IL 62286 ..... (618) 443-2715

\* Located outside of Randolph County but available to Randolph County residents

\*\* Online & National Hotline numbers

**Red Bud Country Mart Pharmacy**

Contact Info: 1375 S. Main St., Red Bud, IL 62278 ..... (618) 282-2870

**Tony’s MediCenter Pharmacy**

Contact Info: 324 West Broadway St., Steeleville, IL 62288 ..... (618) 965-3511

**Victor’s MediCenter Pharmacy**

Contact Info: 2323 Old Plank Rd., Chester, IL 62233 ..... (618) 826-2511

**Wal-Mart (Sparta)**

Contact Info: 1410 North Market St., Sparta, IL 62286 ..... (618) 443-2436

**Wal-Mart (Chester)**

Contact Info: 2206 IL-150, Chester, IL 62233 ..... (618) 826-4898

**DRUG TAKE BACK PROGRAMS**

**Chester Police Department**

*(Medication drop-off 24/7)*

Contact Info: 1330 Swanwick St., Chester, IL 62233 ..... (618) 826-5454

**Memorial Community Pharmacy**

*(Medication drop-off; no liquids or sharps)*

Contact Info: 1900 State St., Chester, IL 62233 ..... (618) 826-6134

**Moody Pharmacy**

*(Medication drop-off; no liquids or sharps)*

Contact Info: 109 East Broadway St., Sparta, IL 62286 ..... (618) 443-2715

**Red Bud Police Department**

*(Medication drop-off 24/7)*

Contact Info: 200 East Market St., Red Bud, IL 62278 ..... (618) 282-2363

**Sparta Police Department**

*(Medication drop-off 24/7)*

Contact Info: 114 West Jackson St., Sparta, IL 62286 ..... (618) 443-2917

**Steeleville Police Department**

*(Medication drop-off 24/7)*

Contact Info: 107 West Broadway St., Steeleville, IL 62288 ..... (618) 965-3134

**PHYSICAL ACTIVITY**

**3 Nails Health & Fitness**

Contact Info: 700 West Shawneetown Trail, Steeleville, IL 62288 ..... (618) 965-2242

**Design Fitness**

Contact Info: 139B West Market, Red Bud, IL 62278 ..... (618) 304-9180

Website: <http://www.design-fitness.com/>

\* Located outside of Randolph County but available to Randolph County residents

\*\* Online & National Hotline numbers

**Randolph County YMCA**

**Services:** Cardio & strength training equipment, free weights, group exercise, certified personal training, locker rooms, on-demand Les Mills workouts, youth fitness (ages 9+), and body composition analysis.  
**Contact Info:** 130 South Oak St., Red Bud, IL 62278 ..... (618) 282-9622  
**Website:** <https://gwrymca.org/locations/randolph-county-ymca>

**Southside Strength & Conditioning, LLC**

**Contact Info:** 1200 South Main St., Red Bud, IL 62278 ..... (618) 444-9250  
**Website:** <https://www.southsidestrengthconditioning.com/contact>

**The Center**

**Contact Info:** The North Campus, 1300 North Market St., Sparta, IL 62286 ..... (618) 443-6966

**Uptown Fitness Center**

**Contact Info:** 171 West Broadway St., Sparta, IL 62286 ..... (618) 449-2165

**Vasquez’s Fitness Center**

**Contact Info:** 2513 State St., Chester, IL 62233 ..... (618) 826-5449

**POISON CONTROL**

**\*\*Illinois Poison Control Center**

**Contact Info:** ..... (800) 222-1222

**POLICE DEPARTMENTS**

**Baldwin Police Department**

**Contact Info:** 404 S. 5<sup>th</sup> St., Baldwin, IL 62217 ..... (618) 785-2785

**Chester Police Department**

**Contact Info:** 1330 Swanwick St., Chester, IL 62233 ..... (618) 826-5454

**Coulterville Police Department**

**Contact Info:** 114 N. 4<sup>th</sup> St., Coulterville, IL 62237 ..... (618)758-2813

**Ellis Grove Police Department**

*See Randolph County Sheriff’s Department listing.*

**Evansville Police Department**

**Contact Info:** 403 Spring St. Evansville, IL 62242 ..... (618) 853-2621

**Percy Police Department**

**Contact Info:** 201 E. Pine St., Percy, IL 62272 ..... (618) 497-2015

**Randolph County Sheriff’s Department**

**Contact Info:** 200 West Buena Vista St., Chester, IL 62233 ..... (618) 826-5484

**Red Bud Police Department**

**Contact Info:** 200 East Market St., Red Bud, IL 62278 ..... (618) 282-2363

**Sparta Police Department**

**Contact Info:** 114 West Jackson St., Sparta, IL 62286 ..... (618) 443-4331

\* Located outside of Randolph County but available to Randolph County residents

\*\* Online & National Hotline numbers

**Steeleville Police Department**

Contact Info: 107 West Broadway St., Steeleville, IL 62288 ..... (618) 965-3134

**Tilden Police Department**

Contact Info: 381 Butler St. Tilden, IL 62292 ..... (618) 587-5411

**PREGNANCY**

**Caritas Family Solutions**

**Services:** Private domestic adoption program, pregnancy options counseling, three types of foster care, intact family services, Fontebella maternity home, parenting classes, St. John Bosco Children’s Center, community integrated living arrangements, anger management, etc.

Contact Info: 1805 N. Market, Sparta, IL 62286 ..... (618) 708-3490  
 900 Royal Heights Rd., Suite 2150, Belleville, IL 62226 ..... (618) 394-5900  
 10286 Fleming Rd., Cartersville, IL 62918 ..... (618) 985-2000

Website: <https://caritasfamilysolutions.org/>

**Life Network of Southern Illinois**

*(All services are free and confidential)*

**Services:** Pregnancy testing, limited ultrasound, limited STI and treatment, pregnancy options counseling, adoption education, parenting and life skills classes, childbirth, newborn care and breastfeeding classes, baby resources, dad’s mentoring programs/resources, abortion recovery program, community/medical resources, abstinence outreach education, and professional counseling.

Contact Info: 324 N. Main St., Red Bud, IL 62278..... (618) 282-4225

Hours: Monday, Tuesday and Thursday, 9:00 am-3:00 pm

Website: <https://www.mylifenet.org/>

**Prenatal Class (Memorial Hospital of Chester)**

**Services:** Free classes offered virtually year round or in-person four times a year on Saturdays from 8:00 am-12:00 pm Virtual classes are self-paced with access to educational videos and printable resources.

Contact Info: 1900 State St., Chester, IL 62233 ..... (618) 826-4581 ext. 1223

Website: <https://www.mhchester.com/prenatal-classes>

**Randolph County Birth to Three program in partnership with Chester School District**

Randolph County Birth to Three program is an ISBE grant funded through Chester Prevention Initiative.

**Services:** This grant-funded program is dedicated to serving pregnant moms and children under the age of three years old. This FREE program offers prenatal education and family and baby resources.

Contact Info: Supervisor Rachel Marshall..... (618) 822-0829

Hours: Monday-Friday 7:30 am-4:00 pm

**Randolph County Health Department**

See information under Anchor Agencies.

**Sparta Pregnancy Care Center**

**Services:** Non-profit ministry informing, educating, aiding, and assisting pregnant women in the positive alternatives to abortion.

Contact Info: 121 North Vine St., Sparta, IL 62286 ..... (618) 443-4935

Website: <https://spartapregnancycenter.org/>

**\*Charity Home Ministries**

**Services:** Providing safe, stable, and appropriate transitional housing, education, mentoring and resource connections to pregnant and parenting teens.

Contact Info: P.O. Box 23426, Belleville, IL 62221 ..... (618) 300-0771

Website: <https://charitihome.org>

\* Located outside of Randolph County but available to Randolph County residents

\*\* Online & National Hotline numbers

**\*Centerstone**

*See information under Anchor Agencies.*

**\*Hager House – Hoyleton FS**

**Services:** Transitional Living Program (TLP) home for pregnant and parenting youth with developmental delays aged 17.5 to 21. TLP teaches youth how to cook, clean, manage finances, practice personal hygiene, self-care, social skills and more.

**Contact Info:** 6015 W. A St., Belleville, IL 62223 ..... (618) 416-7670

**Website:** <https://hoyleton.org/hagar-house-a-new-beginning/>

**\*Lutheran Child and Family Services of Illinois**

*(Sliding fee discount; insurance not accepted)*

**Services include:**

- **Adoption:** Assisting you through every step of your adoption journey
- **Birth Parent Services:** Providing expectant mothers and fathers with compassionate, respectful and confidential assistance as you consider your child’s future as well as your own.
- **Counseling:** Providing trauma-informed counseling to assist individuals in leading healthier lives.
- **Foster Care:** Helping children who have experienced trauma to feel safe, build a future, and return to family.

**Contact Info:** 711 Insight Ave., O’Fallon, IL 62269 ..... (618) 234-8904

**Website:** <http://www.lcfs.org/>

**\*Lutheran Social Services of Illinois**

**Services:** LSSI provides a variety of services to include foster care and family support, prisoner, and family ministry, post-adoption, mental health, alcohol/drug treatment, intellectual/developmental disabilities; affordable housing, and home care for seniors; and youth services. Not all services are provided at all locations. For more information, contact your local office.

**Contact Info:** Marion Children’s Program, 1616 W. Main St., Marion, IL 62959..... (618) 997-9196

Marion PFM, 102 E. DeYoung St., Marion, IL 62959 ..... (618) 997-9076

**Website:** <https://www.lssi.org/>

**\*Planned Parenthood**

**Services:** Abortion, birth control, emergency contraception (morning-after pill), STI testing, treatment and vaccines, HIV services, PrEP for HIV prevention, gender affirming hormone therapy, men’s health services, sexual health education, pregnancy testing & services, reproductive health and preventative services, and Miscarriage management.

**Contact Info:** 317 Salem Place, Fairview Heights, IL 62208..... (618) 277-6668

200 North Emerald Lane, Carbondale, IL 62901 ..... (800) 230-7526

**Website:** <https://www.plannedparenthood.org/>

**PRISON & JAIL SERVICES**

**ComWell**

*See information under Anchor Agencies.*

**\*Illinois Department of Corrections**

**Services:** See the website for additional information on various programs such as Project CHILD, reentry summits, temporary identification, TRAC (Taking Responsibility and Changing), and transitional housing units.

**Website:** <https://idoc.illinois.gov/programs.html>

\* Located outside of Randolph County but available to Randolph County residents

\*\* Online & National Hotline numbers

**\*Law and Grace Ministries**

**Services:** A ministry of Faith Baptist Church, provides free counseling services including substance abuse, anger management and state-approved domestic violence prevention program. Also offering the Fishes and Loaves free food pantry.

**Contact Info:** 428 East A Street, Belleville, IL 62220 ..... (618) 235-6977

**Website:** <https://www.faithbaptist-church.org/lawgraceministries>

**\*Lutheran Social Services of Illinois**

**Services:** Prisoner and family ministry serves those who are incarcerated and their families as well as individuals who have returned from prison to their communities.

**Contact Info:** 102 E. DeYoung, Marion, IL 62959 ..... (618) 997-9076

**Website:** <https://www.lssi.org/>

**\*Southern Illinois Community Engagement Response Team (SICERT)**

**Services:** SICERT is a police-led deflection program designed to connect individuals with substance use or mental health disorders to treatment and social services as an alternative to arrest.

**Contact Info:** TASC hotline..... (618) 418-4777

**\*Treatment Alternatives for Safe Communities (TASC)**

**Services:** Offering specialized case management for people with substance use and mental health issues so they can get and stay healthy.

**Contact Info:** For an assessment or treatment, call ..... (855) 971-8161

**Website:** <https://www.tasc.org/tascweb/home.aspx>

**RECREATION**

**BOWLING**

**American Legion Bowling**

**Contact Info:** 305 South Chester St., Steeleville, IL 62288..... (618) 965-3932

**Ratzkeller Lanes**

**Contact Info:** 1019 Veterans Street, Red Bud, IL 62278 ..... (618) 971-8161

**PARKS**

**Cohen Complex**

**Activities:** Baseball and softball diamonds, concessions, walking/exercise path with fitness stations, tennis courts, multi-purpose field (soccer), parking, picnic area, and pickle ball courts.

**Address:** 3401-3545 Bodes Ln., Chester, IL 62233

**Cole Memorial Park**

**Activities:** Disc golf course, multi-purpose fields, shelter houses, play areas, and a nature trail.

**Address:** Opdyke St., Chester, IL 62233

**Fort de Chartres**

**Activities:** National Historic Landmark with picnic shelters and grills.

**Contact Info:** 1350 State Rte 155, Prairie du Rocher, IL 62277..... (618) 284-7230

**Website:** <http://www.fortdechartres.us/>

**Fort Kaskaskia State Park**

**Activities:** Historic site consists of four major sections: the remains of Fort Kaskaskia, Garrison Hill Cemetery, the Mississippi River overlook, picnic and play area, and large campground.

**Contact Info:** 4372 Park Rd., Ellis Grove, IL 62241 ..... (618) 859-3741

**Website:** <https://dnrhistoric.illinois.gov/experience/sites/site.fort-kaskaskia.html>

\* Located outside of Randolph County but available to Randolph County residents

\*\* Online & National Hotline numbers

**Jaycees Park**

**Address:** South Meadow Lane, Steeleville, IL 62288

**Lincoln Park**

**Address:** 525 W. S. 4<sup>th</sup> St., Red Bud, IL 62278

**Website:** <https://www.cityofredbud.org/parks--recreation.html>

**Percy City Park**

**Contact Info:** S. Brown Avenue, Percy, IL 62272

**Randolph County State Recreation Area**

**Activities:** Trails, fishing, hiking, picnicking, boating, hunting, camping, several shelter houses, and play areas.

**Contact Info:** 4301 South Lake Dr., Chester, IL 62233 ..... (618) 826-2706

**Website:** <https://dnr.illinois.gov/parks/park.randolphcounty.html>

**World Shooting & Recreational Complex**

**Activities:** Camping, cowboy action shooting, fishing, skeet shooting, rifle/pistol, sporting clays, trapshooting, dining at the complex.

**Contact Info:** 1 Main Event Lane, Sparta, IL 62286 ..... (618) 295-2700

**Website:** <https://dnr.illinois.gov/recreation/wsrc.html>

**\*Piney Creek Ravine Nature Reserve**

**Services:** Nature trails for hiking with waterfalls and beautiful rocks.

**Contact Info:** 2280 Piney Creek Rd., Ava, IL 62907 ..... (618) 826-2706

**Website:** <https://dnr.illinois.gov/parks/park.pineycreek.html>

**MISCELLANEOUS & POOLS**

**Downstate Illinois**

**Services:** Downstate Illinois is the Convention and Visitors Bureau for 22 counties and 2 cities in South Central Illinois. Visitors can find information regarding local shopping, meals, wineries, events, outdoor activities, historical sites and more.

**Website:** <https://www.downstateil.org/>

**Ratz Memorial Park & City Pool**

**Contact Info:** Ratz Park, 603 W. Market St., Red Bud, IL 62278 ..... (618) 282-2898

**Website:** <https://www.cityofredbud.org/parks--recreation.html>

**Sparta City Municipal Pool**

**Contact Info:** 1401 North Hillcrest Dr., Sparta, IL 62286 ..... (618) 443-3000

**University of IL – Randolph County Extension Office**

**Services:** Programs include 4-H youth development, environment, family life, horticulture, Illinois nutrition education programs, local foods and small farms, master gardeners and master naturalists.

**Contact Info:** 1403 N. Hillcrest Dr., Sparta, IL 62286 ..... (618) 443-4364

**Website:** <https://extension.illinois.edu/fjprw>

**\*Perry Park Center (Missouri)**

**Activities:** Indoor pool, gymnasium, indoor batting cage, party rooms, theatre, fitness activities, disc golf, multi-purpose fields, library, and more.

**Contact Info:** 800 City Park Dr., Perryville, MO 63775 ..... (573) 547-7275

**Website:** <https://www.cityofperryville.com/608/Parks-Recreation>

\* Located outside of Randolph County but available to Randolph County residents

\*\* Online & National Hotline numbers

**\*Ste. Genevieve County Community Center (Missouri)**

**Activities:** Indoor pool, fitness classes, and party rooms.

**Contact Info:** 21390 MO-32, Ste. Genevieve, MO 63670 ..... (573) 883-5244

**Website:** <https://www.visitmo.com/things-to-do/ste-genevieve-county-community-center>

**RUNAWAY**

**\*\*National Runaway Safeline**

**Services:** Available 24/7 to listen and offer confidential, non-directive and non-judgmental support if you are thinking of running away from home, if you have a friend who has run away, or if you are a runaway ready to go home.

**Contact Info:** ..... (800) RUNAWAY | (800) 786-2989

**Website:** <https://www.1800runaway.org/>

**SENIOR SERVICES**

**NUTRITION SITES**

**Northeastern Randolph County Senior Center (Sparta)**

**Services:** A place to visit, play cards, pool, bingo, bunko, and have lunch. Meal delivery for those in need.

**Contact Info:** 500 W. Second St., Sparta, IL 62246 ..... (618) 443-4020

**Steeleville Senior Center**

**Services:** Daily meals and activities.

**Contact Info:** 107 W. Broadway, Steeleville, IL 62288 ..... (618) 965-3134

**Hours:** Monday-Friday

**Website:** <http://www.steeleville.org/>

**Western Egyptian (Chester Senior Center)**

**Contact Info:** 805 State St., Chester, IL 62233 ..... (618) 826-5108

**Hours:** Monday-Friday 8:00 am-4:00 pm

**Website:** <https://weeoc.org/services/senior-nutrition-program/>

**SENIOR PROGRAMS & SERVICES**

**AmeriCorps Seniors – Retired and Senior Volunteer Program (RSVP)**

**Services:** RSVP provides opportunities for persons age 55 and over to make a difference in their communities through volunteer services.

**Contact:** Chester Senior Center, 805 State St., Chester, IL 62233 ..... (618) 826-5108

**Website:** <https://weeoc.org/services/retired-senior-volunteer-program/>

**Community Wellness Classes and Programs (Memorial Hospital of Chester)**

**Services:** A variety of classes and programs are offered throughout the year at Memorial Hospital. These sessions are usually free and open to the public. Please visit our website or call the Community Relations Coordinator ext. 1373 at Memorial to inquire about current classes and programs.

**Contact Info:** 1900 State St., Chester, IL 62233 ..... (618) 826-4581

**Website:** <https://www.mhchester.com/calendar-of-events>

**Community Wellness Classes and Programs (Sparta Community Hospital)**

**Services:** Sparta Community Hospital offers a wide variety of ongoing community wellness classes and programs for seniors. SCH also offers the “A Matter of Balance” program that is designed to reduce the fear of falling and increase activity levels among older adults. Please visit the SCH website for more information.

**Contact Info:** 818 E. Broadway, Sparta, IL 62286 ..... (618) 443-1467

**Website:** <https://www.spartahospital.com/>

\* Located outside of Randolph County but available to Randolph County residents

\*\* Online & National Hotline numbers

**ComWell**

See Information under Anchor Agencies.

**Randolph County Health Department**

See Information under Anchor Agencies.

**Red Bud Regional Home Care**

**Services:** Alzheimers and dementia care, behavioral health nursing, care transitions, chronic disease management, fall prevention, heart disease, home health aides, infusion therapy, medical social work, medication management, nutritional consult, occupational therapy, pain management, patient/caregiver training, Personal Emergency Response System (PERS), physical therapy, skilled nursing, smooth transition from hospital discharge to home health, speech therapy, and wound, ostomy and continence nursing.

**Contact Info:** 115 W. Market St., Ste 101, Red Bud, IL 62278 ..... (618) 282-3338

**Website:** <https://lhcgroupp.com/locations/red-bud-regional-home-care>

**Red Bud Regional Hospital - Senior Solutions**

**Services:** Intensive outpatient group therapy for senior adults over age 65 who are struggling with depression and anxiety.

**Contact Info:** 325 Spring St., Red Bud, IL 62278..... (618) 282-5950

**Website:** <https://redbudregional.com/senior-emotional-health/>

**Silver Sneakers – Programs for Seniors ages 65+**

**Services:** Local community classes, LIVE online classes and on-demand video workouts.

**Contact Info:** Randolph County YMCA, 130 South Oak St., Red Bud, IL 62278..... (618) 282-9622

Vasquez Fitness Center, 2513 State St., Chester, IL 62233 ..... (618) 826-5449

**\*AgeSmart Community Resources**

**Services:**

Information and Assistance / Respite for Caregiver .....(618) 222-2561

Adult Protective Services (Southwestern IL Visiting Nurse Assn).....(618) 236-5863

Congregate and Home Delivered Meals..... *Contact local nutrition site*

State Health Insurance Program (SHIP).....(618) 222-2561

Health Promotion Programs (Senior Services Plus).....(618) 465-3298

Legal Assistance (Land of Lincoln Legal Assistance Foundation) .....(618) 398-0958

Long-Term Care Ombudsman (Senior Services Plus) .....(618) 465-3298

**Contact Info:** 7 Bronze Pointe S Ste B, Swansea, IL 62226..... (618) 222-2561

**Website:** [https://www.agesmart.org/randolph\\_county\\_services](https://www.agesmart.org/randolph_county_services)

**\*CenterPointe Hospital**

*(Medicare, Medicaid, major insurance, self-pay)*

**Services:** Silver Lining inpatient program specifically for seniors whose lives have been disrupted by various behavioral health and substance use disorders

**Contact Info:** 4801 Weldon Spring Parkway, St. Charles, MO 63304 ..... (636) 441-7300

**Website:** <https://www.centerpointehospital.com/programs/geriatric-inpatient/>

**\*Illinois Department of Children & Family Services – Grandparents raising Grandchildren**

**Services:** The Extended Family Support Program (EFSP) assists relative caregivers who are caring for a relative’s children who are not part of the child welfare system.

**Contact Info:** DCFS Hotline..... (800) 252-2873

Say “I am caring for my relative’s child and have been caring for them for more than 14 days. The child is not being abused or neglected but I need help. I would like to be referred to the Extended Family Support Program.”

**Website:** <https://dcfs.illinois.gov/loving-homes/grandparents-and-older-caregivers-raising-children.html>

\* Located outside of Randolph County but available to Randolph County residents

\*\* Online & National Hotline numbers

**\*Illinois Department on Aging**

**Services:**

- **Senior Helpline** ..... (800) 252-8966  
To report suspected abuse, neglect or financial exploitation of an adult age 60 or older or a person with disabilities age 18-59, call ..... (866) 800-1409
- **Benefit Access Program**  
**Services:** Seniors and persons with disabilities ride free transit benefit and Secretary of State license plate discount.  
**Website:** <https://ilaging.illinois.gov/benefitsaccess.html>
- **Community Care Program (CCP)**  
**Services:** Helps older adults remain safe and supported at home through in-home and community-based care.  
**Website:** <https://ilaging.illinois.gov/programs/ccp.html>
- **Adult Protective Services (APS)**  
**Services:** Respond to reports of abuse concerning older adults and persons with disabilities residing in community setting.  
**Website:** <https://ilaging.illinois.gov/protectionadvocacy/abuse.html>
- **Senior Health Insurance Program (SHIP)**  
**Services:** A free statewide service offering health insurance counseling for Medicare beneficiaries and their caregivers.  
**Website:** <https://ilaging.illinois.gov/ship.html>
- **Long Term Care Ombudsman Program (LTCOP)** ..... (800) 233-4904 or (618) 465-3298  
**Services:** an advocacy program aimed at protecting and improving long-term care and residents' quality of life  
**Website:** <https://ilaging.illinois.gov/programs/ltcombudsman.html>
- **Center for Independent Living, call Linc - CIL** ..... (618) 235-9988
- **Eldercare Locator** ..... (800) 677-1116  
**Website:** <https://eldercare.acl.gov/home>
- **Application for Benefits (SNAP, etc.)** ..... (800) 843-6154  
**Contact Info:** One Natural Resources Way, #100, Springfield, IL 62702 ..... (800) 252-8966  
**Website:** <https://ilaging.illinois.gov/>

**\*Illinois Telecommunication Access Corp (ITAC)**

**Services:** Not-for-profit serving the deaf, hard of hearing, late-deafened, deafblind, and speech-disabled communities. Their phones are superior in amplification, features, adjustability, and durability, and they're FREE.  
**Contact Info:** 3001 Montvale Dr., Ste A, Springfield, IL 62704 ..... (800) 841-6167  
**Website:** <https://www.itacty.org/>

**\*Southwestern Illinois College – Programs and Services for Older Persons (PSOP)**

**Services:** Alzheimer's Support Group, Parkinson's Support Group, and Caregiver Meetings as well as:  
Information and Assistance ..... (618) 234-4410  
Advocacy with government benefit programs ..... ext. 7035  
State Health Insurance Program (SHIP) ..... ext. 7033  
FREE Amplified Phones (ITAC) ..... ext. 7040  
Foster Grandparent Program ..... ext. 7062  
Senior Companion Program ..... ext. 7023  
**Contact Info:** 201 North Church St., Belleville, IL 62220 ..... (618) 234-4410  
**Website:** <http://www.swic.edu/psop>

**\*Violence Prevention Center of Southwestern Illinois**

**Services:** Provide shelter, advocacy, and counseling for people of all ages living in Southwestern Illinois.  
**Contact Info:** P.O. Box 831, Belleville, IL 62222 ..... Crisis Line (618) 295-0892  
**Website:** <https://www.vpcswi.org>

\* Located outside of Randolph County but available to Randolph County residents  
\*\* Online & National Hotline numbers

**\*\*AARP**

**Services:** AARP is dedicated to empowering Americans 50 and older to choose how they live as they age. Services are offered in the following areas: money management, work and jobs, Social Security, Medicare, caregiving, games, and travel.

**Website:** <https://states.aarp.org/illinois/>

**SOCIAL SECURITY BENEFITS**

**Social Security Administration**

**Services:** The Social Security Administration (SSA) manages two types of benefits:

- Social Security (SS/SSDI) which is work-based insurance for retirement or disability, funded by payroll taxes and based on earnings history; and
- Supplemental Security Income (SSI) which is a needs-based program for low-income disabled, blind, or elderly individuals, funded by general tax revenues, focusing on limited income and resources, not work history.

**Contact Info:** ..... (800) 772-1213

**Local Contact Info:** 250 W. Cherry St., Rm 104, Carbondale, IL 62901 ..... (877) 714-0377

**Hours:** Monday-Friday 8:00 am-7:00 pm

**Website:** <https://www.ssa.gov/ssi>

**SEXUAL ASSAULT**

**\*Survivor Empowerment Center**

**Services:** Supporting survivors of domestic and sexual violence (and their children) with shelter and education. (Individuals need to call and be screened before they can advise if a bed is available).

**Contact Info:** 610 South Thompson St., Carbondale, IL 62901 ..... (618) 549-4807

**24-HOUR HOTLINE** ..... (800) 334-2094

**Website:** <https://www.empoweringsurvivors.org/>

**\*Metro East Every Survivor County**

**Services:** Medical and legal advocacy, counseling, community, and professional education and trainings, prevention education, and confidential sexual assault crisis line.

**Contact Info:** .....CRISIS LINE 24/7 (618) 397-0975

**Website:** <https://www.metroeasteverysurvivorcounts.org/>

**\*\*National Sexual Assault Hotline**

**Contact Info:** .....(800) 656 HOPE | (800) 656-4673

**\*\*RAINN’s National Sexual Assault Hotline**

**Website:** <https://rainn.org/help-and-healing/hotline/>

**SMOKING CESSATION**

**Cardiac Pulmonary Rehab Center (Memorial Hospital of Chester)**

**Services:** After an event or diagnosis, your provider can refer you, with an order, to the CPRC. An assessment is completed and an individualized treatment plan is created. Rehabilitation programs at the center provide comprehensive care to patients with heart and lung conditions. Through the program, individuals are given a structured program that includes education, counseling, and exercise to strengthen their lungs and heart. Participants in the program have access to various tools and a full support system to help them recover. The CPRC provides training on physical activity, medications, healthy living, stress management, and smoking cessation.

**Contact Info:** 1900 State St., Chester, IL 62233 ..... (618) 826-4581 ext. 1151

**Website:** <https://www.mhchester.com/cprehab>

\* Located outside of Randolph County but available to Randolph County residents

\*\* Online & National Hotline numbers

**Cardiopulmonary Rehabilitation (Sparta Community Hospital)**

**Services:** A medically supervised program for people with heart or lung conditions. Personalized plans help improve strength, endurance, and confidence through guided exercise, nutrition counseling, health education, breathing techniques, emotional and lifestyle support.

**Contact Info:** 205 South Burns Ave., Sparta, IL 62286 ..... (618) 443-2177 ext. 2185

**Website:** <https://www.spartahospital.com/services/cardiopulmonary-rehabilitation/>

**Lung Screening Program (Memorial Hospital of Chester)**

**Services:** The Lung Cancer Screening Program is covered by most private insurance plans, Medicare, and Medicaid. Patients must have a shared decision-making visit with a medical provider prior to their lung cancer screening test. Check with your provider or call our Nurse Navigator at the phone number below.

**Contact Info:** 1900 State St., Chester, IL 62233 ..... 855-399-LUNG (5864)

**Website:** <https://www.mhchester.com/lung-screening>

**\*\*American Cancer Society – Quit for Life Program**

**Services:** 24/7 phone-based coaching and web-based learning support service to help smokers quit.

Participants are matched with a quit coach who helps develop a personalized quit plan, provides guidance in choosing medicines and gives ongoing follow-up support.

**Website:** <https://www.quitnow.net/mve/quitnow>

**\*\*Illinois Tobacco Quitline**

**Services:** A free resource to help people quit smoking, vaping, or other tobacco use.

**Contact Info:** .....(866) QUIT-YES | (866) 784-8937

**Website:** <https://www.quityes.org/>

**\*\*Respiratory Health Association (RHA)**

**Services:** RHA works year-round to help people quit smoking and to eliminate tobacco-related health disparities. We focus on preventing tobacco initiation, eliminating exposure to secondhand smoke, and increasing access to smoking cessation resources.

**Programs include:** Counsel to Quit and Courage to Quit an adult smoking cessation program. Information also available regarding E-Cigarettes and Vaping.

**Website:** <https://resphealth.org/issues/tobacco-vaping/>

**\*\*Smokefree.gov**

**Services:** Provides information and professional assistance to support those who want to quit smoking; includes online step-by-step cessation guide.

**Website:** <https://smokefree.gov/>

**SUBSTANCE MISUSE & RECOVERY**

For a current list of Substance Abuse Support Groups, call ..... (618) 282-6233 ext.179 or send email to [allianceinfo@comwell.us](mailto:allianceinfo@comwell.us)

**ComWell**

*See information under Anchor Agencies.*

See Recovery and Support Group Meetings at: <https://comwell.us/healthy-communities-alliance/>

**\*CenterPointe Hospital**

*(Medicare, Medicaid, major insurance, self-pay)*

**Services:** Providing a range of behavioral health and addiction services including crisis intervention, assessment, treatment, education and referral. Free online assessment.

**Contact Info:** 4801 Weldon Spring Parkway, St. Charles, MO 63304 ..... (855) 578-1279

**Website:** <https://www.centerpointehospital.com/>

\* Located outside of Randolph County but available to Randolph County residents

\*\* Online & National Hotline numbers

**\*Centerstone**

*See information under Anchor Agencies.*

**\*Chestnut Health Systems**

*(Medicare, Medicaid, most insurance, self-pay)*

**Services:** Include mental health care, substance use treatment, crisis intervention, case management and support services, and integrated care.

**Contact Info:** 12 North 64th St., Belleville, IL 62223 ..... (888) 924-3789

**Website:** <https://chestnut.org/mental-health-and-substance-use-treatment>

**\*Christian Hospital Recovery Center**

**Services:** Offering outpatient treatment for addiction and mental health issues, including those for seniors.

**Contact Info:** 11125 Dunn Road, Medical Office Bldg 2, Suite 401, St. Louis, MO 63136.... (314) 953-8100

**Website:** <https://rehab.org/christian-hospital-recovery-center/>

**\*Comprehensive Behavioral Health Center (The Center)**

*(Discounts available based on family size and income)*

**Services:** Provide quality individualized essential services for people in need of emotional, rehabilitation, and social support, on a 24-hour basis, in the least restrictive environment.

- **Mental Illness:** Crisis, Living Room, Drop In Center, child & adolescents, Adult Re-Deploy, and Project for Assistance in Transition from Homelessness (PATH).
- **Substance Use:** Outpatient treatment, Methadone clinic and residential programs.
- **Parenting Teens**

**Contact Info:** 505 South 8th St., East St. Louis, IL 62201 ..... (618) 482-7330

**Website:** <https://cbhc1.org/>

**\*Gateway Foundation**

**Services:** Withdrawal management, residential inpatient treatment, Patient Hospitalization Program (PHP) outpatient substance use treatment, outpatient alcoholism treatment, intensive outpatient program, and sober living homes.

**Contact Info:** 1 Bronze Pointe North, Swansea, IL 62226 ..... (618) 226-4212

1080 East Park St., Carbondale, IL 62901 ..... (618) 248-0838

**Website:** <https://www.gatewayfoundation.org/>

**\*Memorial Hospital**

**Services:** Medical Stabilization Program – hospital-based detox services, peer recovery, and linkage to resources, and treatment options.

**Contact Info:** 4500 Memorial Drive, Belleville, IL 62226

1404 Cross St., Shiloh, IL 62269

**Phone Main Office:** ..... (618) 257-5341

**Website:** <https://www.bjc.org/locations/medical-stabilization-at-memorial-hospital-in-belleville>

**\*NAMI**

*See information under Anchor Agencies.*

**\*New Season Treatment Center**

**Services:** Medication assisted treatment and counseling.

**Contact Info:** 760 South Kingshighway, Suite F, Cape Girardeau, MO 63703

Existing patients ..... (573) 335-4333 or

New patients ..... (877) 284-7074

St. Louis Metro Treatment Center

9733 St. Charles Rock Road, Breckenridge Hills, MO 63114 ..... (314) 423-7030

2027 Campus Dr., St. Charles, MO 63301 ..... (636)321-7600

**Website:** <https://www.newseason.com/>

\* Located outside of Randolph County but available to Randolph County residents

\*\* Online & National Hotline numbers

**\*The Aviary Recovery Center**

**Services:** Inpatient medical detox, Medication Assisted Treatment, residential drug and alcohol treatment Program, dual diagnosis program, men’s sober living, Partial Hospitalization Program (PHP), Intensive Outpatient Program (IOP).

**Phone Number:** .....(314) 464-0222

**Contact Info:** Residential Program, 22933 Hwy 61, Eolia, MO 63344

Outpatient Program, 333 S. Kirkwood Rd., Ste 303, Kirkwood, MO 63122

**Website:** <http://www.aviaryrecoverycenter.com>

**\*\*Illinois Helpline**

**Services:** Statewide public resource for finding substance use and problem gambling treatment and recovery services in Illinois. 24/7 free and confidential service connecting you or a loved one to information, support and services that you need.

**Contact Info:** 24/7 ..... (833) 234-6343

**Website:** <https://www.helplineil.org/app/home>

**\*\*Narcotics Anonymous**

**Services:** Recovery and service resources.

**Website:** <https://na.org/>

**\*\*Substance Abuse & Mental Health Services Administration (SAMHSA)**

**Services:** free and confidential treatment referral hotline/Treatment Locator Tool

**Contact Info:** ..... TDD (800) 487-4889 or (800) 662-HELP (4357)

**Website:** <https://www.samhsa.gov/find-help/national-helpline>

**SUICIDE PREVENTION**

**\*\*988 Lifeline**

**Services:** At the 988 Suicide & Crisis Lifeline, we understand that life’s challenges can sometimes be difficult. Whether you’re facing mental health struggles, emotional distress, alcohol or drug use concerns, or just need someone to talk to, our caring counselors are here for you. You are not alone.

**Contact Info:** ..... 988

**Website:** <https://988lifeline.org/>

**\*\*Illinois Suicide Prevention**

**Services:** Illinois Department of Public Health provides suicide information, resources and warning signs.

**Website:** <https://dph.illinois.gov/topics-services/prevention-wellness/suicide-prevention.html>

**\*\*LifeSavers Training Corp.**

**Services:** LifeSavers is a recognized student organization in several high schools in southern Illinois which have chosen to be proactive in caring for their student population. LifeSavers is a peer-support suicide and crisis-prevention program designed to help teenagers cope healthfully with the challenges of drugs and alcohol, peer and family relationships, sexual issues, academic problems, aggression, anxiety, and suicide. LifeSavers Training is listed in the SPRC/AFSP best practices registry for suicide prevention.

**Website:** <https://www.lifesaverstrainingcorp.org/>

**\*\*The Hope Line**

**Services:** Free live chats 24 hrs; helping students and young adults in crisis by offering sound advice and a safe place to connect. Topics include relationships, trauma, addition, self-care, sex and mental health.

**Contact Info:** ..... (800) 442-HOPE or (800) 442-4673

**Website:** Choose “talk to a coach” at <https://www.thehopeline.com/>

\* Located outside of Randolph County but available to Randolph County residents

\*\* Online & National Hotline numbers

## TRANSPORTATION

### Illinois Department of Healthcare and Family Services

**Services:** Non-emergency medical transportation for Medicaid recipients.

**Fee-for-Service customers**, enrolled in Medicaid but not enrolled in a Managed Care Organization (MCO), should visit [www.netspap.com](http://www.netspap.com) or call Transdev at **877-725-0569**. Transdev does not schedule transportation but can provide a list of providers to contact.

**Managed Care customers** should contact the phone number on the back of their membership card to schedule transportation. Each MCO has specific requirements for scheduling transportation

**Website:** <https://hfs.illinois.gov/medicalclients/medicaltransportationnonemergency.html>

### Monroe Randolph Transit District

**Services:** Public transportation for anyone, anywhere in Monroe and Randolph Counties. All vehicles are ADA compliant and lift equipped. Services should be scheduled 24 hours in advance. We accept exact cash, sell tickets, and bill Medicaid/Managed Care. MRTD is a Medicaid/managed care (Blue Cross, Humana, Aetna, Meridian, Molina) transportation provider and all medical trips are FREE with pre-approval. Please allow 5 days for the approval process.

- **Demand/Response:** Service is available within Randolph and Monroe counties and will pick you up at any address you specify and drop you off at another address you specify. Cost is \$6.00 one-way.
- **Go Local:** Trips begin and end within the same city limits (available in Steeleville, Sparta, Chester or Red Bud). Cost is \$3.00 one-way.

**Hours:** Monday-Friday 5:00 am- 6:00 pm

**Contact Info:** 1320 Melmar Dr., Sparta, IL 62286 ..... (618) 443-9087

**Email:** [mrt.dispatch@gmail.com](mailto:mrt.dispatch@gmail.com)

**Website:** <http://www.goMRTD.com>

### \*JewelRide Non-Emergency Medical Transport

**Services:** Include non-emergency medical transportation, medical and hospital appointments, senior transportation, dialysis visits, prescription pickup, assisted living transfers, errands, and tailor-made transportation, transportation for youth, or book our shuttle bus. Serving Randolph and Washington counties among others.

**Contact Info:** 2110 Troy Rd., Edwardsville, IL.....(618) 250-4771

**Website:** <https://jewelride.com/>

## UNITED STATES POSTAL SERVICE

For all USPS Locations:..... TTY (877) 889-2457

### Baldwin Post Office

**Special Services:** Money Orders, Burial Flags, Federal Duck Stamps

**Contact Info:** 109 South 5th St., Baldwin, IL 62217-9998..... (618) 785-2271

**Lobby Hours:** 7 Days/Week 12:01 am-11:59 pm

**Retail Hours:** M-F 8:00 am-12:00 pm, Sat 8:30 am-9:30 am, Sun Closed

### Chester Post Office

**Special Services:** Money Orders, Burial Flags, Greeting Card Services, Passport Appointments, Passport Photos

**Contact Info:** 1321 Swanwick St., Chester, IL 62233-9998 ..... (618) 826-2233

**Lobby Hours:** 7 Days/Week 12:01 am-11:59 pm

**Retail Hours:** M-F 9:00 am-4:30 pm, Sat 9:00 am-12:00 pm, Sun Closed

**Passport Photo Appointment Hours:** M-F 9:00 am-12:00 pm, 1:00 pm-2:30 pm,  
and Sat 9:00 am-11:30 am

\* Located outside of Randolph County but available to Randolph County residents

\*\* Online & National Hotline numbers

**Ellis Grove Post Office**

**Special Services:** Money Orders  
**Contact Info:** 211 Ellis Blvd., Ellis Grove, IL 62241-9998 ..... (618) 859-3341  
**Lobby Hours:** 7 Days/Week 12:01 am-11:59 pm  
**Retail Hours:** M-F 7:30 am-11:30 am, Sat 7:30 am-9:15 am, Sun Closed

**Evansville Post Office**

**Special Services:** Money Orders, Burial Flags, Federal Duck Stamps  
**Contact Info:** 402 Liberty St., Evansville, IL 62242-9998 ..... (618) 853-4415  
**Lobby Hours:** 7 Days/Week 12:01 am-11:59 pm  
**Retail Hours:** M-F 8:00 am-11:00 am and 12:00 pm-3:00 pm, Sat 8:30 am-9:30 am, Sun Closed

**Prairie du Rocher Post Office**

**Special Services:** Money Orders, Burial Flags, Federal Duck Stamps  
**Contact Info:** 211 Henry St., Prairie du Rocher, IL 62277-9998 ..... (618) 284-3377  
**Lobby Hours:** 7 Days/Week 12:01 am-11:59 pm  
**Retail Hours:** M-F 7:30 am-11:30 am, Sat 8:00 am-9:00 am, Sun Closed

**Red Bud Post Office**

**Special Services:** Money Orders, Burial Flags, Federal Duck Stamps  
**Contact Info:** 150 S. Main St., Red Bud, IL 62278 ..... (618) 282-2180  
**Lobby Hours:** 7 Days/Week 12:01 am-11:59 pm  
**Retail Hours:** M-F 8:30 am-4:30 pm, Sat 8:30 am-12:00 pm, Sun Closed

**Sparta Post Office**

**Special Services:** Money Orders, Burial Flags, Federal Duck Stamps, Greeting Card Services  
**Contact Info:** 208 West Broadway St., Sparta, IL 62286-9998 ..... (618) 443-2213  
**Lobby Hours:** 7 Days/Week 12:01 am-11:59 pm  
**Retail Hours:** M-F 8:00 am-5:00 pm, Sat 8:30 am-12:00 pm, Sun Closed

**Steeleville Post Office**

**Special Services:** Money Orders, Burial Flags, Federal Duck Stamps, Greeting Card Services  
**Contact Info:** 409 West Broadway, Steeleville, IL 62288-9998 ..... (618) 965-3341  
**Lobby Hours:** 7 Days/Week 12:01 am-11:59 pm  
**Retail Hours:** M-F 8:30 am-11:00 am and 12:00 pm-5:00 pm, Sat 8:30 am-11:00 am, Sun Closed

**UTILITIES**

**Western Egyptian Economic Opportunity Council, Inc.**

*See information under Anchor Agencies.*

**VETERANS**

**ComWell**

*See information under Anchor Agencies.*

**\*Centerstone**

*See information under Anchor Agencies.*

\* Located outside of Randolph County but available to Randolph County residents

\*\* Online & National Hotline numbers

**\*Department of Veterans Affairs Behavioral Medicine**

(Medicare)

**Services:** VA Marion Healthcare System offers a wide range of health, support, and facility services for Veterans in southern IL. See the website for a listing of specific services.

**Local Contact Info:** 2401 Main St., Marion, IL 62959 ..... (618) 997-5311

**Website:** <https://www.marion.va.gov/>

**\*Illinois Department of Veteran’s Affairs**

**Services:** Benefits and services for veterans and their families include: benefits & VSO, programs, veterans’ homes, military records, healthcare and education.

**Local Contact Info:** 4519 W. Main St., Belleville, IL 62226 ..... (618) 233-5140 or (800) 4379824

Women Veterans Call Center ..... (855) 829-6636

VA Benefits Home ..... (877) 222-8387

**Website:** <https://www2.illinois.gov/veterans/Pages/default.aspx>

**\*NAMI Southwestern Illinois**

*See information under Anchor Agencies.*

**\*Supportive Services for Veteran Families**

**Services:** Providing eligible Veteran families with outreach, case management and assistance in obtaining VA and other benefits which may include health care services, daily living services, personal financial planning, transportation services, fiduciary and payee services, legal services child care services, housing counseling and specialized resources for veterans with criminal histories.

**Contact Info:** The Salvation Army, 401 NE Adams St., Peoria, IL 61603 ..... (618) 363-1924

**Website:** <https://www.voa.org/services/supportive-services-for-veterans-and-their-families/>

**\*\*Veteran’s Crisis Line**

**Services:** Free confidential support available 24/7 to all veterans, service members, National Guard, Reserve and their families and friends.

**Contact Info:** 24/7 ..... Dial 988 then press 1

**Website:** <https://www.veteranscrisisline.net/>

**VISION**

**BLIND**

**Illinois Department of Human Services – Bureau of Blind Services**

**Services:** IDHS/DRS is the state’s lead agency serving persons who are blind or visually impaired.

Specialized services include Illinois Center for Rehabilitation and Education, Business Enterprise Program, Vocational Rehabilitation program, and Community-Based Instructional program.

**Contact Info:** ..... (800) 843-6154 or TTY (866) 324-5533

**Website:** <https://www.dhs.state.il.us/page.aspx?item=32305>

**\*Illinois Secretary of State -Talking Book and Braille Services**

**Services:** TBBS provides audio and braille library service via mail or digital download to any Illinois resident who is unable to read standard print material due to a permanent or temporary visual or physical disability.

**Contact Info:** Illinois State Library, Talking Book and Braille Service, Gwendolyn Brooks Bldg, 300 S. Second St., Springfield, IL 62701 ..... (800) 665-5576 or (217) 785-0022

**Website:** <https://www.ilsos.gov/departments/library/tbbs/about-tbbs.html>

\* Located outside of Randolph County but available to Randolph County residents

\*\* Online & National Hotline numbers

**MISCELLANEOUS**

**Marion Eye Center**

**Contact Info:** 203 Van Zant St., Chester, IL 62233 ..... (618) 826-5414  
 216 North Market St., Sparta, IL 62286 ..... (618) 443-2001  
**Website:** <http://www.marioneye.com/>

**Southern Illinois Eye Care**

**Contact Info:** 425 West Holmes St., Chester, IL 62233 ..... (618) 826-4521  
 520 East Broadway St., Ste 100, Sparta, IL 62286 ..... (618) 443-5252  
**Website:** <https://www.southernillinoiseyecare.com/>

**Walmart Vision Center**

**Contact Info:** 1410 North Market St., Sparta, IL 62286 ..... (618) 443-4373  
**Website:** [https://www.walmart.com/store/222-sparta-il/vision-center?veh=seo\\_loc](https://www.walmart.com/store/222-sparta-il/vision-center?veh=seo_loc)

**\*\*American Academy of Ophthalmology**

**Services:** EyeCare America is a public service program of the American Academy of Ophthalmology that provides uninsured and underinsured individuals 18 years and older with access to medical eye exams.  
**Contact Info:** ..... (877) 887-6327  
**Website:** <https://www.aao.org/eyecare-america>

**\*\*National Eye Health Education Program**

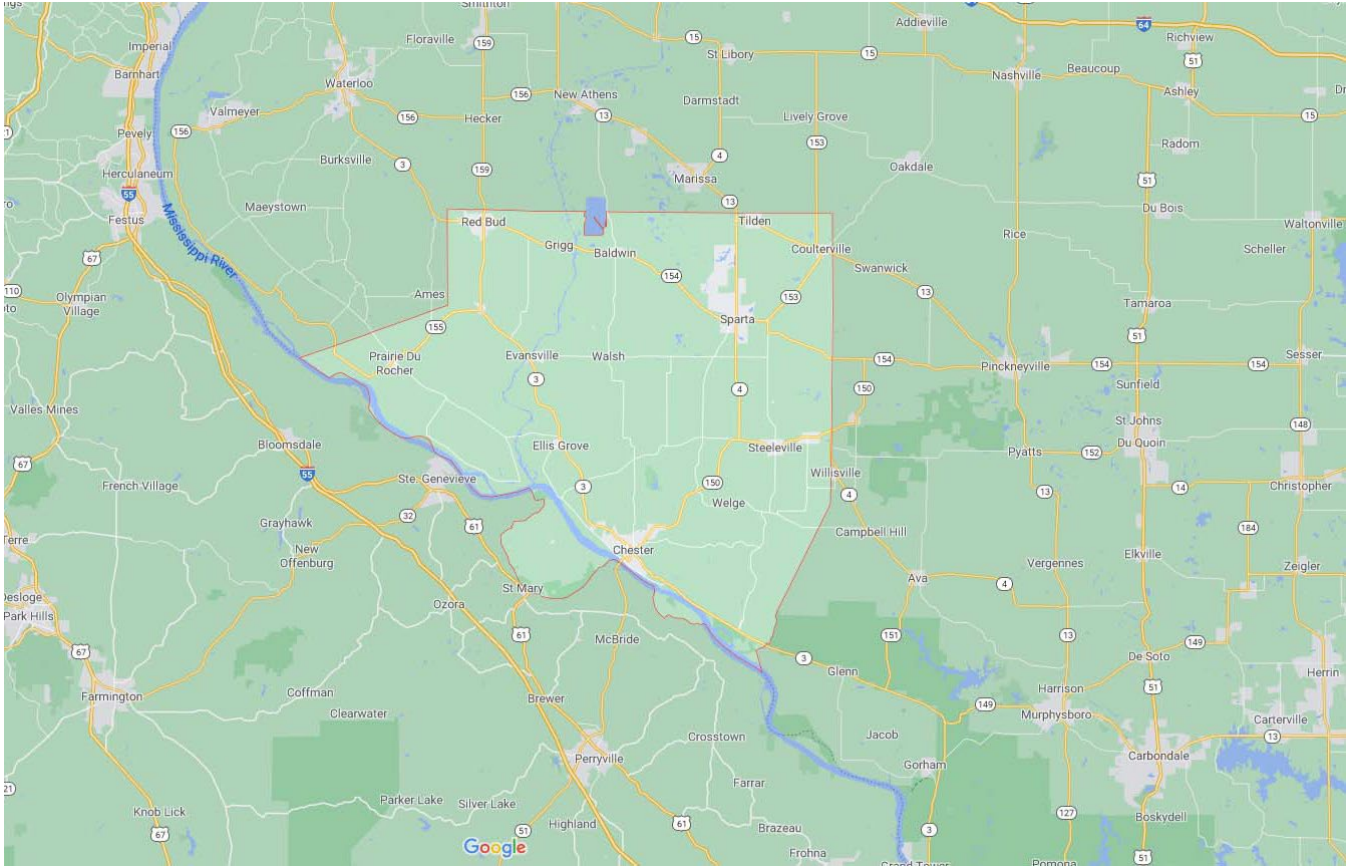
**Services:** NEHEP’s 6 program areas are: Diabetic eye disease, Glaucoma, Vision rehabilitation, Eye health for Hispanics/Latinos, Vision and aging, and Eye Health for Black/African American people.  
**Contact Info:** ..... (800) 680-2578  
**Email:** [2020@nei.nih.gov](mailto:2020@nei.nih.gov)  
**Website:** <https://www.nei.nih.gov/about/education-and-outreach/national-eye-health-education-program>

**WEATHERIZATION**

**Western Egyptian Economic Opportunity Council, Inc.**

*See information under Anchor Agencies.*

\* Located outside of Randolph County but available to Randolph County residents  
 \*\* Online & National Hotline numbers



The Randolph County Resource Guide is a publication of the ongoing work and contributions of those who believe in “Bringing People and Services Together” throughout Randolph County and Southern Illinois. The Healthy Communities Alliance, recovery and support committees have played a valuable role in maintaining the circulation and updating of this guide.

Printed guides were funded by ComWell through the Rural Communities Opioid Response Program.



\* Located outside of Randolph County but available to Randolph County residents

\*\* Online & National Hotline numbers

This Randolph County, IL Resource Guide is produced and circulated by the entities listed below. If errors are found or if additions are needed, please contact [allianceinfo@comwell.us](mailto:allianceinfo@comwell.us) with the subject line "Randolph County Resource Guide". Please provide the below information to the listed email:

1. Page of update/correction
2. Suggested additional information to add
3. Name of Organization
4. Contact information (Address, Phone Number, Email, Website)
5. Hours of operation
6. List of services or description of what this business/organization offers or does that fits in the scope of this Resource Guide.



**Western Egyptian  
Economic Opportunity Council**  
Community Action Agency  
Serving The Area Since 1965



**Public Health**  
Prevent. Promote. Protect.